

MEMORANDUM

MAY 16 1977

LAND CORNER RECORDATION CERTIFICATE
Filing Requirement of Act 74, Mich. P.A. 1970

Register's Office }
Gogebic County }

Received for record the
25th day of NOVEMBER
A. D. 1996 at 10:50 o'clock
11 a.m., and recorded in
Liber 6 of CORNERS
on page 83
Ramona Collins Deputy
Register of Deeds

For corners in Gogebic Located in: Corner Code #
(County)
1. Public Land Survey Section 27 T 47N R 46W I-10
T _____ R _____
T _____ R _____
T _____ R _____
2. Property Controlling S _____ T _____ R _____
in Section S _____ T _____ R _____
3. Miscellaneous S _____ T _____ R _____
Property in Section S _____ T _____ R _____

Register of Deeds Stamp & File Number

4. Lot No. _____, Recorded Plat _____
5. Private Claims _____

One-quarter corner Sections 27 & 26, T47N, R46W.

I, John R. Garske, in a field survey on October 17, 1996,
do hereby certify that under requirements of P.A. 74, Michigan P.A. of 1970, the corner points mentioned
in lines 1 and 2 above were in conformance with regulations and rules therefore as required in the current
manual of survey instructions of the United States Department of the Interior, Bureau of Land
Management or by a decree of a Court of Law and/or that the corner points mentioned in lines 3, 4 and
5 above were in conformance with the rules of the Michigan Board of Professional Surveyors or by a
Decree of a Court of Law; established, re-established, monumented, re-monumented, recovered, found
as expressed below:

A	B	C	D	E	F	G	H	I	J	K	L	M
2	6	5	4	3	2	1						
3												
4	7	8	9	10	11	12						
5												
6	18	17	16	15	14	13						
7												
8	19	20	21	22	23	24						
9												
10	30	29	28	27	26	25						
11												
12	31	32	33	34	35	36						
13												

NOTE: Not more than 4 corners, all in the same town and range, may be recorded on this certificate.

A. Description of original monument and accessories and/or subsequent restoration:

On June 12, 1851, Austin Burt, U.S.D.S., set a post from which:
7" fir bears - S20°W - 16 links 7" fir - N10°E - 8 links

B. Description of corner evidence found and/or method applied in restoring or reestablishing corner:

The corner location falls in Black River Lane, a gravel road. I could find no evidence of the corner location and, therefore, set the 1/4 corner at a single proportional position and in the center of the road. This location fits very well with the GLO creek call south of 98.34 feet.

Record research on file. (Sketch on back)

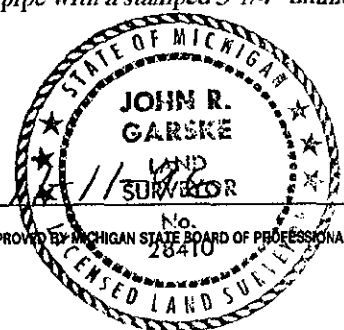
PEER GROUP APPROVED
Richard H. Dean 11/11/96
COUNTY REPRESENTATIVE

C. Description of monument for corner and accessories established to perpetuate locating the position of the corner:

I set a stamped 3 1/4" aluminum cap on a 3/4" diameter x 32" long iron rod 5" below the gravel road surface of Black River Lane from which I established the following bearing trees and/or objects:
Power pole - N34°W - 57.92 feet
8" balsam - N42°E - 50.66 feet
6" twin maple - S52°E - 43.09 feet
A reference monument being a 2 1/2" diameter x 30" long aluminum pipe with a stamped 3 1/4" diameter aluminum cap - S57°W - 25.20 feet
6' steel sign rail - S57°W - 1.29 feet from R.M.

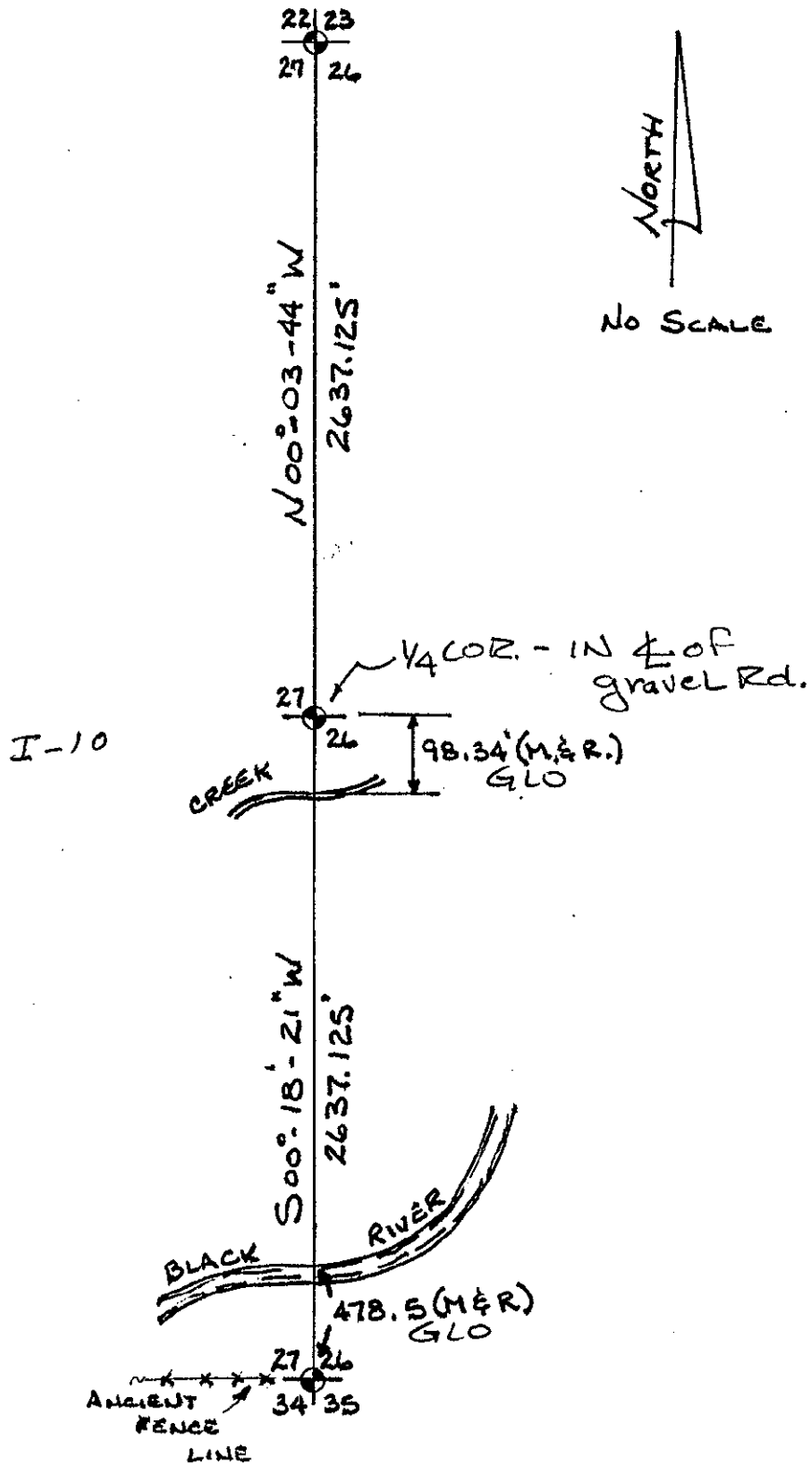
Signed by John R. Garske
Surveyor's Michigan License No. 28410

Date 11/11/96



FORM APPROVED BY MICHIGAN STATE BOARD OF PROFESSIONAL SURVEYORS, JAN. 28, 1971
REVISED MAY 14, 1975
REVISED JAN., 1983

SKETCH



SURVEY &
REMONSTRATION

MAY 16 1997

COMM. 1997