

LAND CORNER RECORDATION CERTIFICATE
Filing Requirement of Act 74, Mich. P.A. 1970

Register's Office }
 Gogebic County } ss.

For corners in Gogebic (County) Located In: Corner Code #

1. Public Land Survey	T <u>47N</u> R <u>46W</u>	<u>I-11</u>
	T _____ R _____	_____
	T _____ R _____	_____
	T _____ R _____	_____
2. Property Controlling in Section	S _____ T _____ R _____	_____
	S _____ T _____ R _____	_____
3. Miscellaneous Property in Section	S _____ T _____ R _____	_____
	S _____ T _____ R _____	_____
4. Lot No. _____, Recorded Plat _____		
5. Private Claims _____		

Received for record the 25TH day of NOVEMBER A. D. 1996 at 10:50 o'clock A m., and recorded in Liber 6 of CORNERS on page 84
Ramona Collins Deputy
 Register of Deeds

Register of Deeds Stamp & File Number

The section corner common to Section 26, 27, 34 & 35, T47N, R46W.

I, John R. Garske, in a field survey on October 22, 19 96, do hereby certify that under requirements of P.A. 74, Michigan P.A. of 1970, the corner points mentioned in lines 1 and 2 above were in conformance with regulations and rules therefore as required in the current manual of survey instructions of the United States Department of the Interior, Bureau of Land Management or by a decree of a Court of Law and/or that the corner points mentioned in lines 3, 4 and 5 above were in conformance with the rules of the Michigan Board of Professional Surveyors or by a Decree of a Court of Law; established, re-established, monumented, re-monumented, recovered, found as expressed below:

A	B	C	D	E	F	G	H	I	J	K	L	M
2	6	5	4	3	2	1						
3												
4	7	8	9	10	11	12						
5												
6	18	17	16	15	14	13						
7												
8	19	20	21	22	23	24						
9												
10	30	29	28	27	26	25						
11												
12	31	32	33	34	35	36						
13												

NOTE: Not more than 4 corners, all in the same town and range, may be recorded on this certificate.

A. Description of original monument and accessories and/or subsequent restoration:

On June 12, 1851, Austin Burt, U.S.D.S., set a wooden post and established the following bearing trees:
 14" cedar - N42°W - 52 links (21.12')
 14" fir - S30°E - 14 links (9.24')

B. Description of corner evidence found and/or method applied in restoring or reestablishing corner:

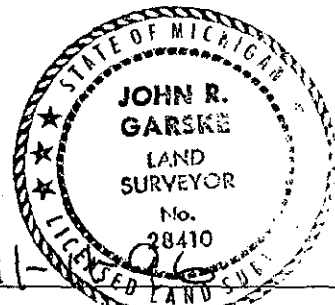
I found an ancient barbed wire fence line which ends at a corner post. A 9" fir with a U.S.F.S. tree tag dated 12-20-49 is pointed at the post. The post location matches the GLO description and natural feature tie of 478.5 feet to the Black River. The location checks reasonably well with other established corners.

Record research on file. (Sketch on back)

PEER GROUP APPROVED
Richard L. Walsh 11/11/96
 COUNTY REPRESENTATIVE

C. Description of monument for corner and accessories established to perpetuate locating the position of the corner:

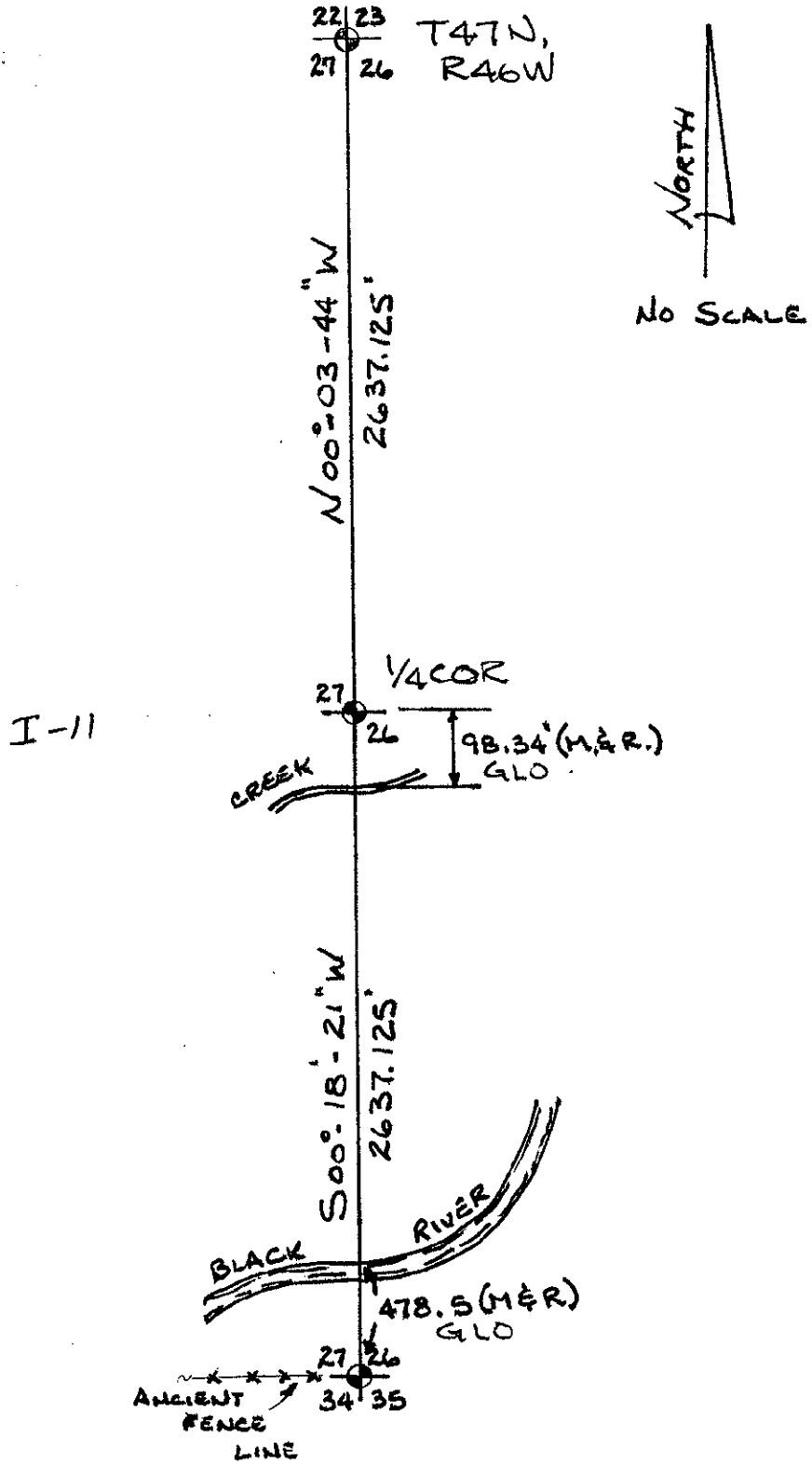
I set a stamped 3 1/4" diameter aluminum cap atop a 2 1/2" diameter x 30" long aluminum monument. The cap is stamped: County Remonumentation, T47N, R46W, 27, 26, 34, 35, 1996, R.L.S. 28410. I established the following bearing trees and reference objects:
 6" spruce - S54°E - 20.20 feet
 4" red maple - S15°W - 13.70 feet
 8" red maple - N15°W - 15.86 feet
 6" steel rail with sign - N72°E - 1.46 feet



Signed by John R. Garske
 Surveyor's Michigan License No. 28410

Date 11-11-96

SKETCH



SURVEY &
REMOVAL COMPANY

MAY 1 9 1987

COMPANY