

**SURVEY &
REMONUMENTATION**

SEP 29 1994

COMMISSION

LAND CORNER RECORDATION CERTIFICATE
Filing Requirement of Act 74, Mich. P.A. 1970

For corners in

Gogebic
(County)

Located In:

Corner Code #

- | | | |
|---------------------------------------|---------------------------|------------|
| 1. Public Land Survey S-21 | T <u>47N</u> R <u>47W</u> | <u>G-7</u> |
| | T _____ R _____ | _____ |
| | T _____ R _____ | _____ |
| | T _____ R _____ | _____ |
| 2. Property Controlling in Section | S _____ T _____ R _____ | _____ |
| | S _____ T _____ R _____ | _____ |
| 3. Miscellaneous Property in Sec. | S _____ T _____ R _____ | _____ |
| | S _____ T _____ R _____ | _____ |
| 4. Lot No. _____, Recorded Plat _____ | | |
| 5. Private Claims _____ | | |
- Section corner common to 15, 16, 21 & 22, T47N, R47W

Register's Office }
Gogebic County } ss.

Received for record the
16 day of SEPT
A. D. 1994 at 4:00 o'clock
P m., and recorded in
Liber 5 of CORNERS
on page 119
Ramona Collins Deputy
Register of Deeds

Register of Deeds Stamp & File Number

	A	B	C	D	E	F	G	H	I	J	K	L	M
2	6	5	4	3	2	1							
3													
4	7	8	9	10	11	12							
5													
6	16	17	16	15	14	13							
7													
8	19	20	21	22	23	24							
9													
10	30	29	28	27	26	25							
11													
12	31	32	33	34	35	36							
13													

I, John R. Garske, in a field survey on July, 19 94, do hereby certify that under requirements of P.A. 74, Michigan P.A. of 1970, the corner points mentioned in lines 1 and 2 above were in conformance with regulations and rules therefore as required in the current manual of survey instructions of the United States Department of the Interior, Bureau of Land Management or by a decree of a Court of Law and/or that the corner points mentioned in lines 3, 4 and 5 above were in conformance with the rules of the Michigan Board of Land Surveyors or by a Decree of a Court of Law; established, re-established, monumented, re-monumented, recovered, found as expressed below:

NOTE: Not more than 4 corners, all in the same town and range, may be recorded on this certificate.

A. Description of original monument and accessories and/or subsequent restoration:

Original survey by William Ives, D.S., in 1848. Set wood post. Original bearing trees: Spruce 12" - S62°E, 28 links; fir 12" - N49°W, 61 links.

The corner position was found by Ewart C. Muller, RLS 15048 in June 1976 and marked by a 1" iron rod in a monument box in the center of the intersection which was set in 1969 by Michigan State Highway Department. He recorded the corner in liber 1 of land corners P. 190. Accessories: top of hydrant - N40°W, 47.13 feet; P. pole - N43°E, 42.88 feet; P. pole - S42°W, 45.72 feet.

B. Description of corner evidence found and/or method applied in restoring or reestablishing corner:

I reset a 4" steel spike with a 1" diameter top at the corner position of U.S. 2 and Hemlock Street. The corner had been destroyed since 1976 and paved over. It falls approximately 1 foot east of a manhole. Muller's ties were used in checking our reset position. I updated the corner as noted below to bring it up to county and state specifications.

Act 74 research on file with County Register of Deeds Office.

PEER GROUP

Approved

Richard P. Drahn

9/14/94



C. Description of monument for corner and accessories established to perpetuate locating the position of the corner:

I set a 4" case hardened steel spike with a 1" diameter to at the corner position and I established the following reference objects: Two reference monuments consisting of a 3/4" x 30" rebar with a 3" aluminum cap stamped to indicate the corner position as follows:

- R.M.#1 - S47°W, 41.00 feet - used a P. pole in place of steel sign post, 4.75 feet away
- R.M.#2 - N36°W, 46.60 feet - with a hydrant 2.35 feet away to the left and a street sign post, 1.85 feet away to the right
- NE corner house - S33°E, 66.74 feet
- P. pole - N25°E, 47.02 feet
- P. pole - N49°E, 42.85 feet

SEE SKETCH ON BACK

Signed by John R. Garske

Date 8/29/94

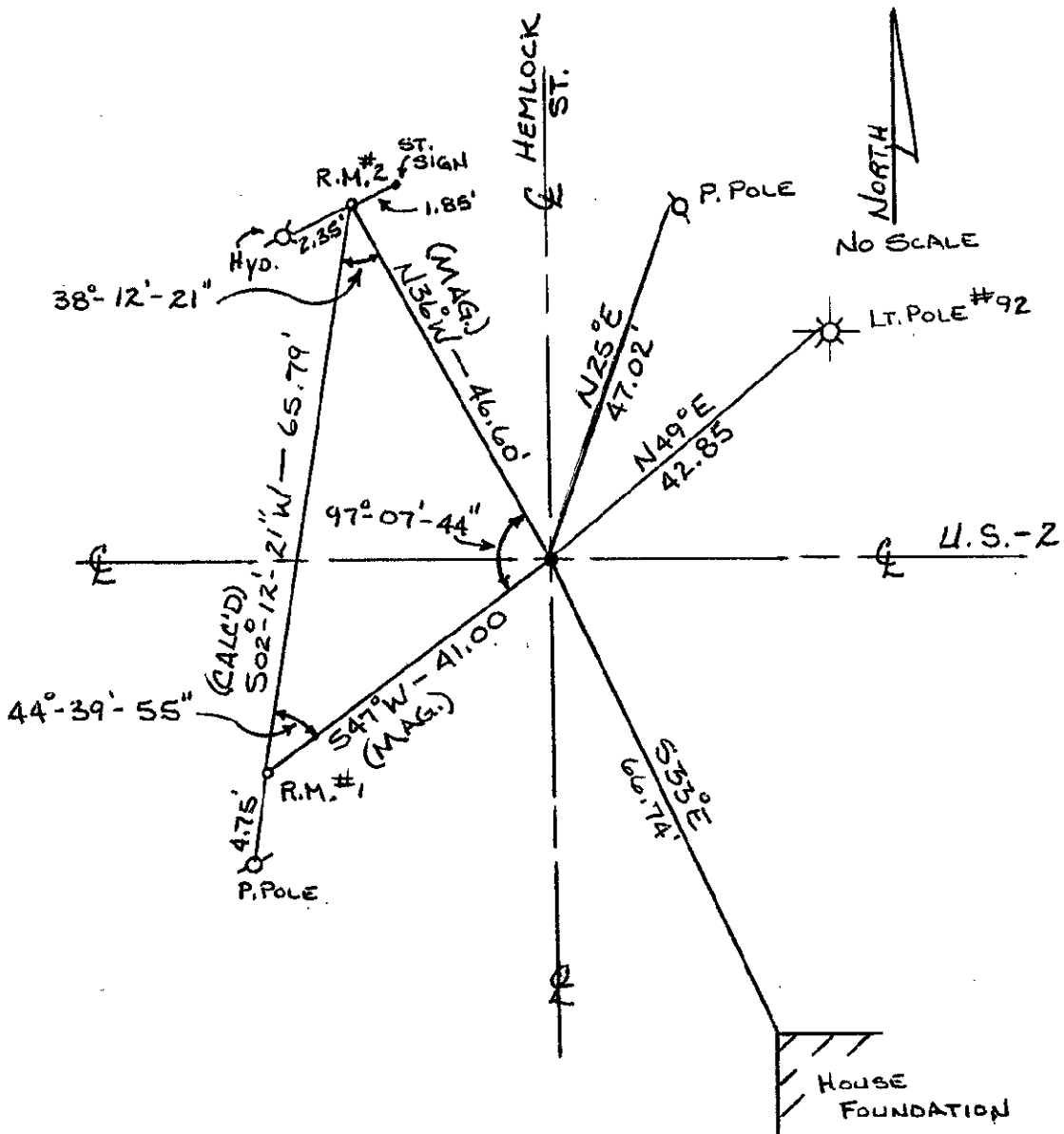
Surveyor's Michigan License No. 28410

SURVEY &
REMONUMENTATION

SEP 29 1994

COMMISSION

SKETCH



47-47, G-7