

SURVEY & REMONUMENTATION

SEP 29 1994

LAND CORNER RECORDATION CERTIFICATE
Filing Requirement of Act 74, Mich. P.A. 1970

Register's Office }
Gogebic County } ss.

For corners in COMMISSION
Gogebic
(County)

Received for record the
16TH day of SEPT
A. D. 1994 at 3:50 o'clock
P m., and recorded in
Liber 5 of CORNERS

Located In:	Corner Code #
1. Public Land Survey S-3 T <u>47N</u> R <u>47W</u>	<u>H-1</u>
T _____ R _____	_____
T _____ R _____	_____
T _____ R _____	_____
2. Property Controlling S _____ T _____ R _____	_____
in Section S _____ T _____ R _____	_____
3. Miscellaneous S _____ T _____ R _____	_____
Property in Sec. S _____ T _____ R _____	_____

on page 103
Kimona Collins, Deputy
Register of Deeds

Register of Deeds Stamp & File Number

4. Lot No. _____, Recorded Plat _____
5. Private Claims _____

One-quarter corner common to Sections 3 & 34

I, John R. Garske, in a field survey on July, 19 94, do hereby certify that under requirements of P.A. 74, Michigan P.A. of 1970, the corner points mentioned in lines 1 and 2 above were in conformance with regulations and rules therefore as required in the current manual of survey instructions of the United States Department of the Interior, Bureau of Land Management or by a decree of a Court of Law and/or that the corner points mentioned in lines 3, 4 and 5 above were in conformance with the rules of the Michigan Board of Land Surveyors or by a Decree of a Court of Law; established, re-established, monumented, re-monumented, recovered, found as expressed below:

	A	B	C	D	E	F	G	H	I	J	K	L	M
2	6	5	4	3	2	1							
3													
4	7	8	9	10	11	12							
5													
6	18	17	16	15	14	13							
7													
8	19	20	21	22	23	24							
9													
10	30	29	28	27	26	25							
11													
12	31	32	33	34	35	36							
13													

NOTE: Not more than 4 corners, all in the same town and range, may be recorded on this certificate.

A. Description of original monument and accessories and/or subsequent restoration:

Original survey by William A. Burt, D.S., in 1848. Set cedar post. Original bearing trees: Sugar 9" - N17°E, 22 links; Ironwood 8" - N36°W, 45 links.

The 1/4 corner position was found by John R. Garske, RLS 28410 in November 1985 and marked by a 5/8" iron in 24" iron rod set below the pavement. The corner was recorded in liber 2 of land corners P. 724. Accessories: P. pole - N32°W, 43.41 feet; P. pole - N59°E, 60.50 feet.

B. Description of corner evidence found and/or method applied in restoring or reestablishing corner:

I found a P.K. nail marking the corner position which checks with the witnesses in my previous certificate. I updated the corner as noted below to bring it up to county and state specifications.

Act 74 research on file with County Register of Deeds Office.

PEER GROUP

Approved

Richard P. Drahn

9/14/94

SEE SKETCH ON BACK

C. Description of monument for corner and accessories established to perpetuate locating the position of the corner:

I replaced the found P.K. nail with a 3" steel nail with a 1" head printed "Survey Mark" and established the following reference objects: Two reference monuments consisting of a 2 1/2" x 30" aluminum pipe with a 3 1/4" aluminum cap stamped to indicate the corner position as follows: R.M.#1 - S46°W, 41.33 feet - with a steel sign post 0.87 feet away; R.M.#2 - S48°E, 50.47 feet - with a steel sign post 1.82 feet away; existing P. pole - N32°W, 43.41 feet; existing P. pole - N59°E, 60.50 feet.

Signed by John R. Garske
Surveyor's Michigan License No. 28410

Date 8/29/94

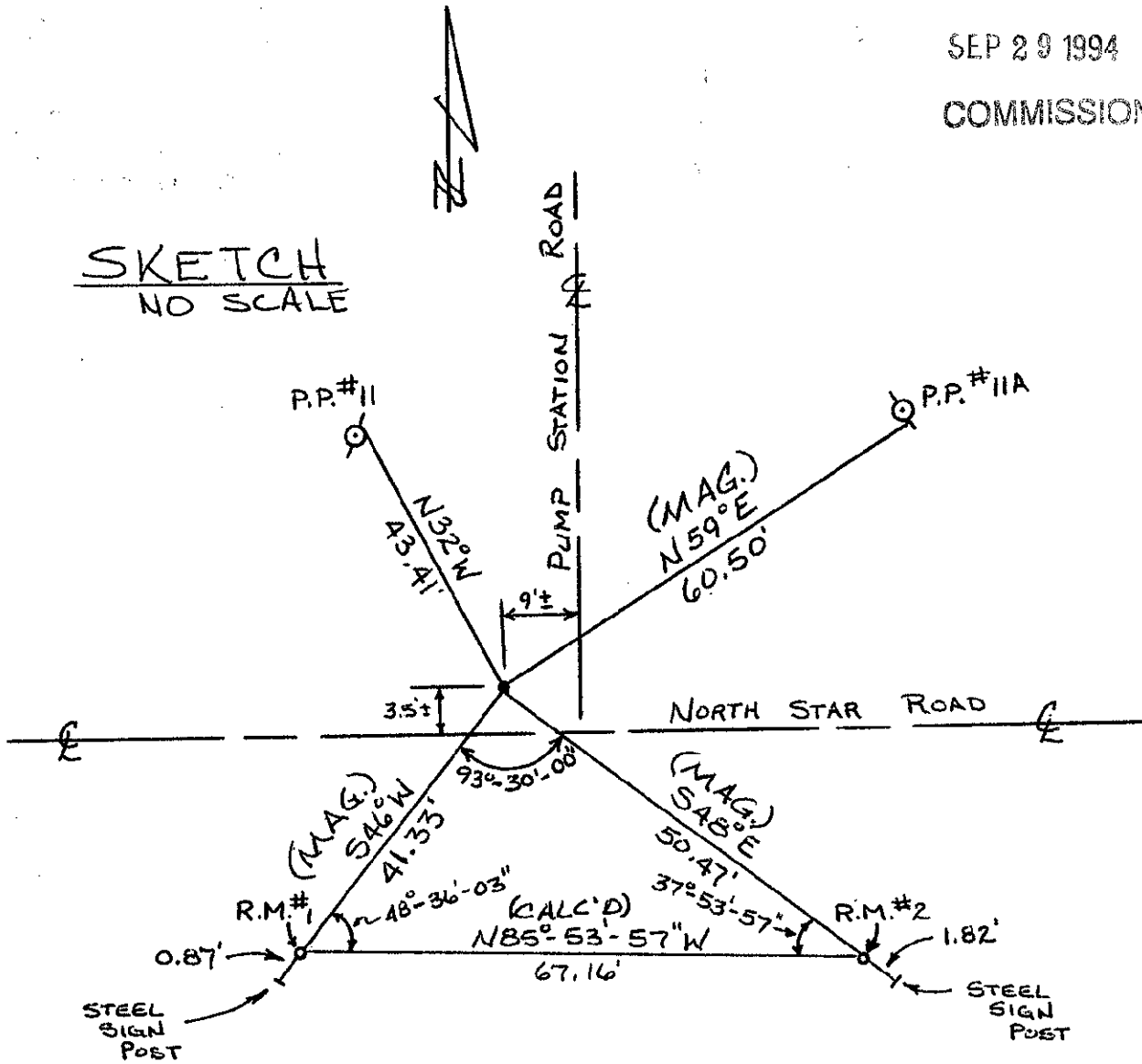


SURVEY &
REMONUMENTATION

SEP 29 1994

COMMISSION

SKETCH
NO SCALE



47-47, H-1