

**SURVEY & REMONUMENTATION**

SEP 29 1994

COMMISSION

**LAND CORNER RECORDATION CERTIFICATE**  
Filing Requirement of Act 74, Mich. P.A. 1970

Register's Office }  
Gogebic County } ss.

Received for record the  
16 day of SEPT  
A. D. 1994 at 4:00 o'clock  
P m., and recorded in  
Liber 5 of CORNER  
on page 120  
Ramona Collins, Deputy  
Register of Deeds

Register of Deeds Stamp & File Number

For corners in Gogebic (County)

1. Public Land Survey	S-22	T <u>47N</u> R <u>47W</u>	<u>H-7</u>
		T _____ R _____	_____
		T _____ R _____	_____
		T _____ R _____	_____
2. Property Controlling in Section	S _____	T _____ R _____	_____
	S _____	T _____ R _____	_____
3. Miscellaneous Property in Sec.	S _____	T _____ R _____	_____
	S _____	T _____ R _____	_____

4. Lot No. \_\_\_\_\_, Recorded Plat \_\_\_\_\_

5. Private Claims \_\_\_\_\_

One-quarter corner common to Sections 15 & 22, T47N, R47W.

I, John R. Garske, in a field survey on JULY, 19 94, do hereby certify that under requirements of P.A. 74, Michigan P.A. of 1970, the corner points mentioned in lines 1 and 2 above were in conformance with regulations and rules thereore as required in the current manual of survey instructions of the United States Department of the Interior, Bureau of Land Management or by a decree of a Court of Law and/or that the corner points mentioned in lines 3, 4 and 5 above were in conformance with the rules of the Michigan Board of Land Surveyors or by a Decree of a Court of Law; established, re-established, monumented, re-monumented, recovered, found as expressed below:

A	B	C	D	E	F	G	H	I	J	K	L	M
2	6	5	4	3	2	1						
3												
4	7	8	9	10	11	12						
5												
6	18	17	16	15	14	13						
7												
8	19	20	21	22	23	24						
9												
10	30	29	28	27	26	25						
11												
12	31	32	33	34	35	36						
13												

**NOTE: Not more than 4 corners, all in the same town and range, may be recorded on this certificate.**

A. Description of original monument and accessories and/or subsequent restoration:

Original survey by William Ives, D.S., in 1848. Set wood post. Original bearing trees: Fir 2" - N50°E, 6 links; Cedar 3" - S22°W, 17 links.

The corner position was found by Ewart Muller, RLS 15408 in April 1976 by using ties from the City of Ironwood Engineer's Office. The corner is in the center of the intersection and consists of a 1/2" iron rod set in a monument box. He recorded the corner in Liber 1 of land corners, P. 185. Accessories: P. pole - N10°W, 67.00 feet; P. pole - S20°W, 61.45 feet; S.E. corner building - N35°W, 65.05 feet.

B. Description of corner evidence found and/or method applied in restoring or reestablishing corner:

Found P.K. nail marking the corner position which checked with witnesses from Muller's certificate. I updated the corner to bring it up to county and state specifications.

Act 74 research on file with County Register of Deeds Office.

**PEER GROUP** Approved  
Richard L. Drahm 9/14/94

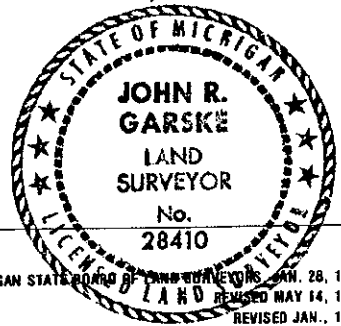
C. Description of monument for corner and accessories established to perpetuate locating the position of the corner:

Using the found P.K. nail, I established the following reference objects: Two reference monuments consisting of a 3/4" rebar with a 3" aluminum cap set flush with the asphalt and stamped to indicate the corner position as follows: RM#1 - N45°W, 40.44 feet with a sign on a P. pole 2.0 feet away; RM#2 - N49°E, 41.53 feet; P. pole - S36°E, 43.99 feet; P. pole - S20°W, 60.55 feet.

SEE SKETCH ON BACK

Signed by John R. Garske  
Surveyor's Michigan License No. 28410

Date 8/30/94



SURVEY &  
REMONUMENTATION

SEP 29 1994

COMMISSION

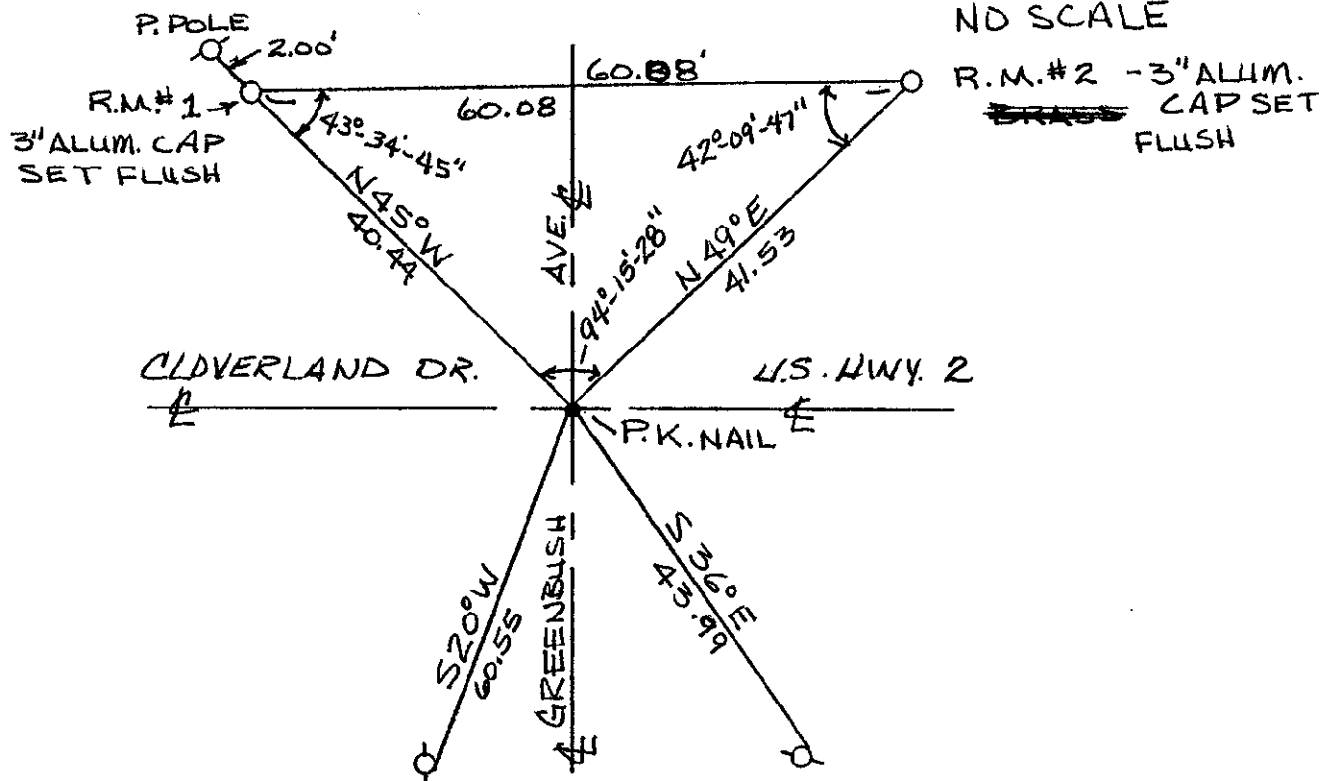
SKETCH

1/4 COR 15 | T47N, R47W  
22

BEARINGS ARE  
MAGNETIC



NO SCALE



47-47, H-7