

**SURVEY & REMONUMENTATION**

SEP 29 1994

COMMISSION

**LAND CORNER RECORDATION CERTIFICATE**  
**Filing Requirement of Act 74, Mich. P.A. 1970**

Register's Office } ss.  
 Gogebic County }

For corners in

Gogebic  
 (County)

Located In:

Corner Code #

1. Public Land Survey S-14 T 47N R 47W I-6  
 T \_\_\_\_\_ R \_\_\_\_\_  
 T \_\_\_\_\_ R \_\_\_\_\_  
 T \_\_\_\_\_ R \_\_\_\_\_  
 T \_\_\_\_\_ R \_\_\_\_\_
2. Property Controlling S \_\_\_\_\_ T \_\_\_\_\_ R \_\_\_\_\_  
 in Section S \_\_\_\_\_ T \_\_\_\_\_ R \_\_\_\_\_
3. Miscellaneous S \_\_\_\_\_ T \_\_\_\_\_ R \_\_\_\_\_  
 Property in Sec. S \_\_\_\_\_ T \_\_\_\_\_ R \_\_\_\_\_
4. Lot No. \_\_\_\_\_, Recorded Plat \_\_\_\_\_
5. Private Claims \_\_\_\_\_

*Seg. #1*

Received for record the  
16 day of SEPT  
 A. D. 1994 at 9:00 o'clock  
P m., and recorded in  
 Liber 5 of CORNERS  
 on page 118  
Ramona Collins, Deputy  
 Register of Deeds

Register of Deeds Stamp & File Number

One-quarter corner common to Sections 15 & 14

I, John R. Garske, in a field survey on July, 19 94, do hereby certify that under requirements of P.A. 74, Michigan P.A. of 1970, the corner points mentioned in lines 1 and 2 above were in conformance with regulations and rules therefore as required in the current manual of survey instructions of the United States Department of the Interior, Bureau of Land Management or by a decree of a Court of Law and/or that the corner points mentioned in lines 3, 4 and 5 above were in conformance with the rules of the Michigan Board of Land Surveyors or by a Decree of a Court of Law; established, re-established, monumented, re-monumented, recovered, found as expressed below:

	A	B	C	D	E	F	G	H	I	J	K	L	M
2	6	5	4	3	2	1							
3													
4	7	8	9	10	11	12							
5													
6	18	17	16	15	14	13							
7													
8	19	20	21	22	23	24							
9													
10	30	29	28	27	26	25							
11													
12	31	32	33	34	35	36							
13													

**NOTE: Not more than 4 corners, all in the same town and range, may be recorded on this certificate.**

A. Description of original monument and accessories and/or subsequent restoration:

Original survey by William Ives, D.S., in 1848. Set wood post. Original bearing trees: Fir 4" - N68°E, 68 links; Fir 10" - N57°W, 40 links.

The one-quarter corner position was found by Ewart C. Muller, RLS 15408, in June of 1979 and marked by a P.K. nail in center of intersection. He recorded the one-quarter corner in liber 2 of land corners P. 325. Accessories: P. pole - S-35°W, 42.81 feet; P. pole - N42°W, 36.35 feet; P. pole - N45°E, 38.08 feet. The one-quarter corner was also recorded by John P. Goss, RLS 23509 in April 1981 and marked by a 1" x 24" iron rod. He recorded the one-quarter corner in liber 2 of land corners P. 103. Accessories: Spruce 12" - S30°W, 62.65 feet; P. pole - N48°W, 40.69 feet; sign post - N33°W, 90.85 feet; P. pole - N52°E, 41.34 feet.

B. Description of corner evidence found and/or method applied in restoring or reestablishing corner:

I found a P.K. nail marking the corner position which checks with the witnesses in his certificate. I updated the corner as noted below to bring it up to county and state specifications.

Act 74 research on file with County Register of Deeds Office.

**PEER GROUP**

**Approved**

Richard L. Deahn

9/14/94

C. Description of monument for corner and accessories established to perpetuate locating the position of the corner:

Using the existing P.K. nail at the corner location, I established the following reference objects: Two reference monuments consisting of a 2 1/2" x 30" aluminum pipe with a 3 1/4" aluminum cap stamped to indicate the corner position as follows: R.M. #1-N56°E, 38.97 feet - used a P. pole in place of steel sign post 1.66' away; R.M. #2 -S22°E, 75.29 feet with steel sign post 0.50 feet away; P. pole - S35°W, 47.69; existing P. pole - N48°W, 40.69 feet.

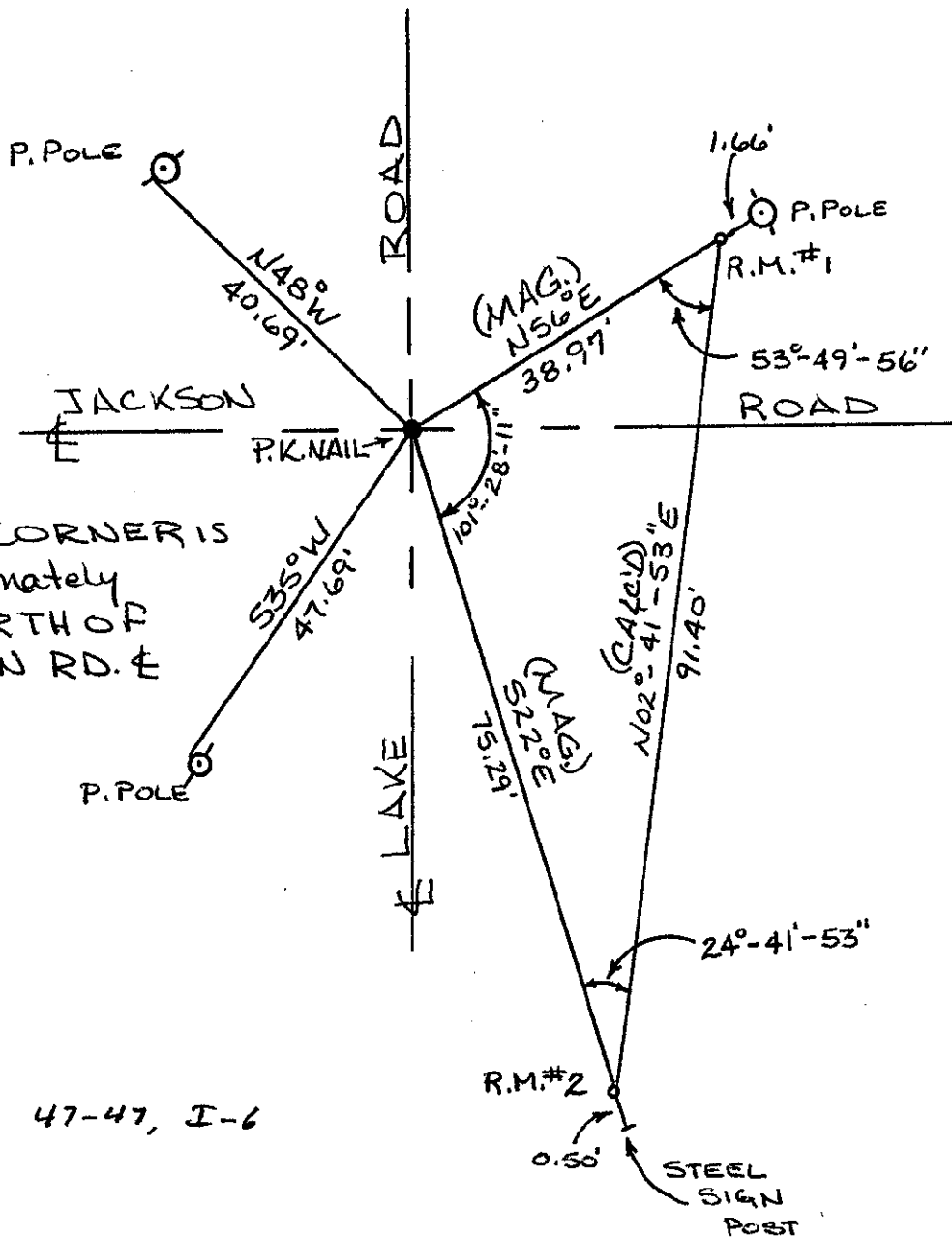
SEE SKETCH ON BACK



Signed by John R. Garske  
 Surveyor's Michigan License No. 28410

Date 8/29/94

SKETCH  
NO SCALE



NOTE: CORNER IS  
APPROXIMATELY  
2.5' NORTH OF  
JACKSON RD. E

47-47, I-6

SURVEY &  
REMONUMENTATION

SEP 29 1994

COMMISSION