

**SURVEY &  
REMONUMENTATION**

SEP 29 1994

**COMMISSION**

**LAND CORNER RECORDATION CERTIFICATE**  
Filing Requirement of Act 74, Mich. P.A. 1970

For corners in

Gogebic  
(County)

Located In:

Corner Code #

- |                                    |                           |            |
|------------------------------------|---------------------------|------------|
| 1. Public Land Survey S-14         | T <u>47N</u> R <u>47W</u> | <u>I-7</u> |
|                                    | T _____ R _____           | _____      |
|                                    | T _____ R _____           | _____      |
|                                    | T _____ R _____           | _____      |
| 2. Property Controlling in Section | S _____ T _____ R _____   | _____      |
|                                    | S _____ T _____ R _____   | _____      |
| 3. Miscellaneous Property in Sec.  | S _____ T _____ R _____   | _____      |
|                                    | S _____ T _____ R _____   | _____      |

Register's Office } ss.  
Gogebic County }

Received for record the  
15 day of SEPT  
A. D. 1994 at 11:00 o'clock  
P M., and recorded in  
Liber 5 of CORNERS  
on page 121  
Rhonda Collins, Deputy  
Register of Deeds

Register of Deeds Stamp & File Number

4. Lot No. \_\_\_\_\_, Recorded Plat \_\_\_\_\_  
5. Private Claims \_\_\_\_\_

Section corner common to Sections 14, 15, 22 & 23

I, John R. Garske, in a field survey on July, 19 94, do hereby certify that under requirements of P.A. 74, Michigan P.A. of 1970, the corner points mentioned in lines 1 and 2 above were in conformance with regulations and rules therefore as required in the current manual of survey instructions of the United States Department of the Interior, Bureau of Land Management or by a decree of a Court of Law and/or that the corner points mentioned in lines 3, 4 and 5 above were in conformance with the rules of the Michigan Board of Land Surveyors or by a Decree of a Court of Law; established, re-established, monumented, re-monumented, recovered, found as expressed below:

**NOTE: Not more than 4 corners, all in the same town and range, may be recorded on this certificate.**

	A	B	C	D	E	F	G	H	I	J	K	L	M
2	6		5		4		3		2		1		
3													
4	7		8		9		10		11		12		
5													
6	18		17		16		15		14		13		
7													
8	19		20		21		22		23		24		
9													
10	30		29		28		27		26		25		
11													
12	31		32		33		34		35		36		
13													

**A. Description of original monument and accessories and/or subsequent restoration:**

Original survey by William Ives, D.S., in 1848. Set wood post. Original bearing trees: Elm 6" - S48°W, 24 links; Fir 8" - N33°E, 29 links.

The corner position was found by Ewart Muller, RLS 15408, in July 1977 using ties from the City of Ironwood Engineer's Office and Michigan dept. of State Highway plans and marked by a 3/4" iron in a monument box. The corner was recorded in Liber 1 of Land Corners, P. 331. Accessories: Top of hydrant - N40°E, 50.93 feet; P. pole - S47°E, 42.81 feet; P. pole - S42°W, 43.12 feet.

The corner position was also found and recorded by John Goss, RLS 23509 in October 1980 due to the removal of old witnesses during road reconstruction. A P.K. nail was set at corner position. Accessories: P. pole - N60°W, 57.52 feet; Tele. pole - S34°W - 45.00 feet; P. pole - S53°E, 50.65 feet.

**B. Description of corner evidence found and/or method applied in restoring or reestablishing corner:**

I re-established the corner with information from various surveys of record to re-establish the corner in its correct position which checks with the witnesses in the certificate. I updated the corner as noted below to bring it up to county and state specifications.

Act 74 research on file with County Register of Deeds Office.

**FEER GROUP**

**Approved**

Richard L. Drahn

9/14/94

**C. Description of monument for corner and accessories established to perpetuate locating the position of the corner:**

I set a 4" long x 1/2" diameter case hardened steel spike with a 1" diameter top at the corner position, I established the following reference objects: Two reference monument consisting of a 2 1/2" x 30" aluminum pipe with a 3" aluminum cap stamped to indicate the corner position as follows: R.M.#1 - N57°E, 58.67 feet - 1.9 feet off the south edge of the sidewalk; R.M.#2 - N51°W, 55.03 feet - with a P. pole 2.0 feet away; existing P. pole - S34°W, 45.00 feet; P. pole - S3°E, 50.60 feet.

SEE SKETCH ON BACK

Signed by

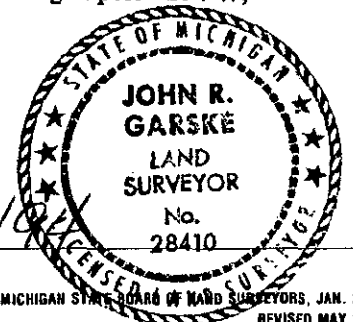
John R. Garske


Date

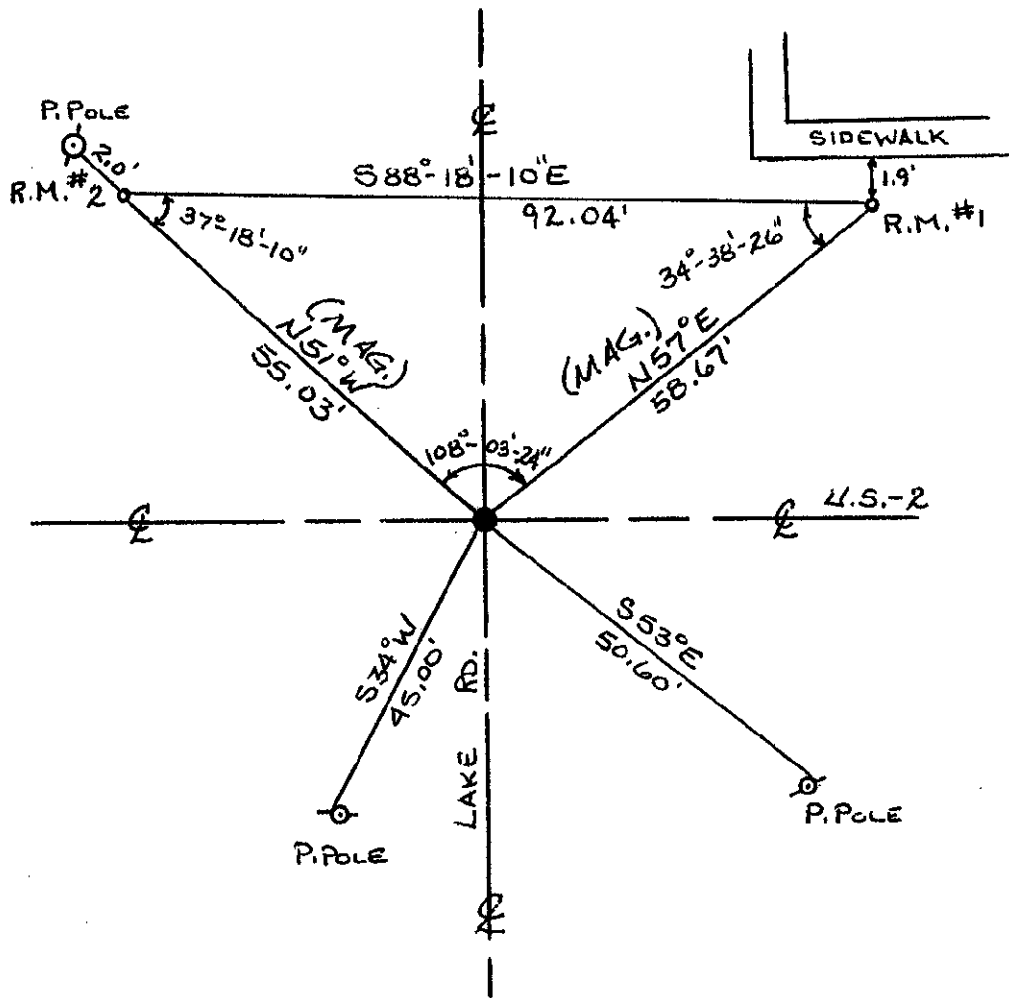
8/29/94

Surveyor's Michigan License No.

28410



  
 NORTH  
 No SCALE



SURVEY &  
 REMONUMENTATION

SEP 29 1994

COMMISSION

47-47, I-7