

**SURVEY &  
REMONUMENTATION**

SEP 29 1994

**LAND CORNER RECORDATION CERTIFICATE**  
Filing Requirement of Act 74, Mich. P.A. 1970

Register's Office }  
Gogebic County } ss.

Received for record the  
16 day of SEPT  
A. D. 1994 at 4:10 o'clock  
P m., and recorded in  
Liber 5 of CORNERS  
on page 128

Ramona Collins, Deputy  
Register of Deeds

Register of Deeds Stamp & File Number

For corners in COMMISSION  
Gogebic  
(County)

Located In: Corner Code --#

- |                                       |         |                           |            |
|---------------------------------------|---------|---------------------------|------------|
| 1. Public Land Survey                 | S-27    | T <u>47N</u> R <u>47W</u> | <u>I-9</u> |
|                                       |         | T _____ R _____           | _____      |
|                                       |         | T _____ R _____           | _____      |
|                                       |         | T _____ R _____           | _____      |
| 2. Property Controlling<br>in Section | S _____ | T _____ R _____           | _____      |
|                                       | S _____ | T _____ R _____           | _____      |
| 3. Miscellaneous<br>Property in Sec.  | S _____ | T _____ R _____           | _____      |
|                                       | S _____ | T _____ R _____           | _____      |

4. Lot No. \_\_\_\_\_, Recorded Plat \_\_\_\_\_  
5. Private Claims \_\_\_\_\_

Section corner common to 22, 23, 26 & 27, T47N, R47W

I, John R. Garske, in a field survey on July, 19 94, do hereby certify that under requirements of P.A. 74, Michigan P.A. of 1970, the corner points mentioned in lines 1 and 2 above were in conformance with regulations and rules therefore as required in the current manual of survey instructions of the United States Department of the Interior, Bureau of Land Management or by a decree of a Court of Law and/or that the corner points mentioned in lines 3, 4 and 5 above were in conformance with the rules of the Michigan Board of Land Surveyors or by a Decree of a Court of Law; established, re-established, monumented, re-monumented, recovered, found as expressed below:

**NOTE: Not more than 4 corners, all in the same town and range, may be recorded on this certificate.**

A. Description of original monument and accessories and/or subsequent restoration:

Original survey by William Ives, D.S., in 1848. Set wood post. Original bearing trees: Ironwood 8" - N56°E, 39 links; Sugar 16" - S64°W, 26 links.

The corner position was found by Ewart C. Muller, RLS 15048 in June of 1976 consisting of a 2" iron stake. He recorded the corner in liber 2 of land corners P. 189. Accessories: P. pole - N48°E, 36.53 feet; S.E. corner house No. 442, 31.30; N.E. corner house No. 443, 44.30 feet.

B. Description of corner evidence found and/or method applied in restoring or reestablishing corner:

I found the 2" iron stake marking the corner position which checks with the witnesses in my previous certificate. I updated the corner as noted below to bring it up to county and state specifications.

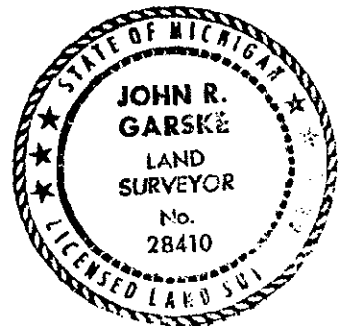
Act 74 research on file with County Register of Deeds Office.

**PEER GROUP**

**Approved**

Richard L. Drabm

9/14/94



C. Description of monument for corner and accessories established to perpetuate locating the position of the corner:

Using the existing iron stake at the corner location, I established the following reference objects:  
Two reference monuments consisting of a 2 1/2" x 30" aluminum pipe with a 3 1/4" aluminum cap stamped to indicate the corner position as follows:

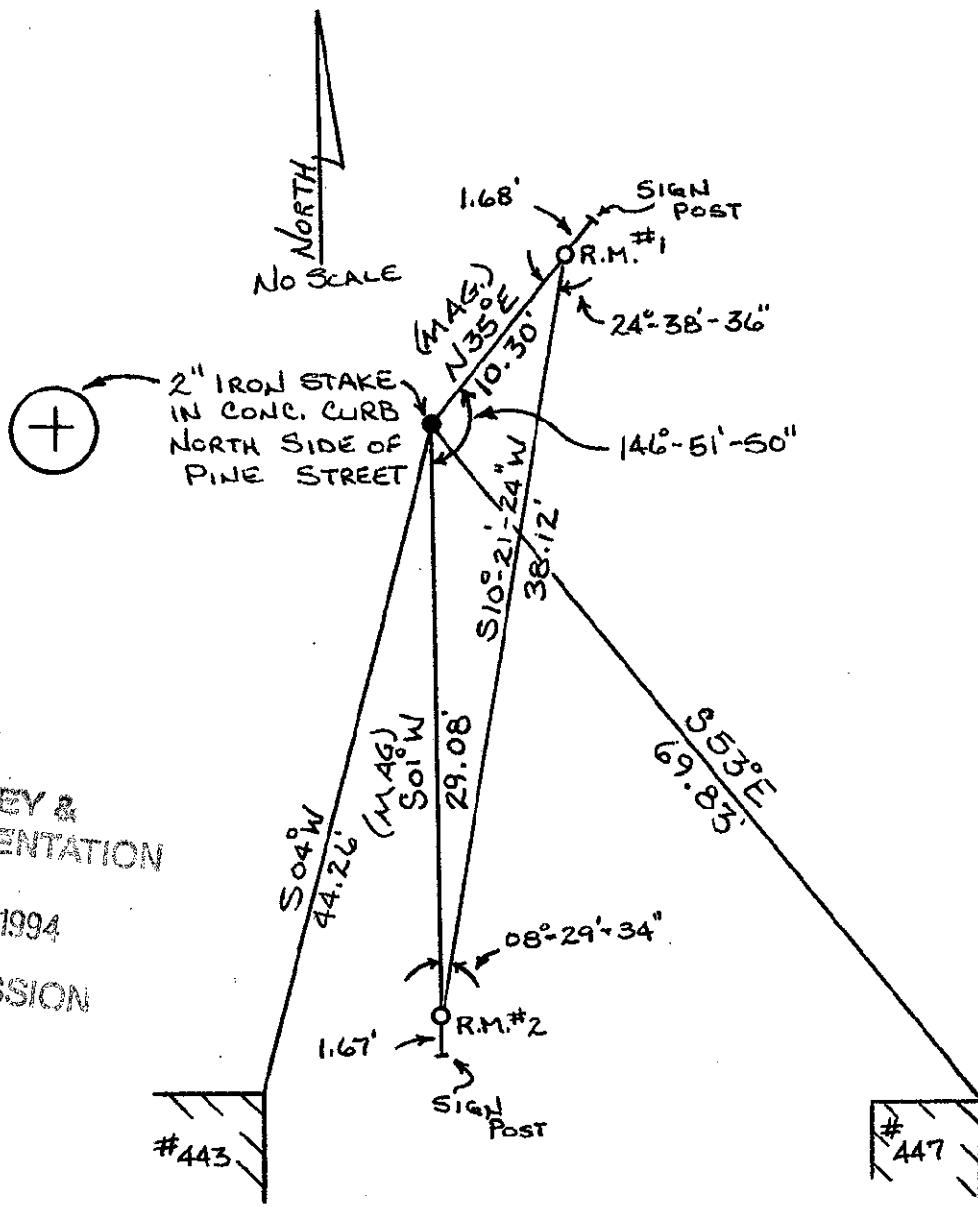
- R.M.#1 - N35°E, 10.30 feet - with steel sign post, 1.68 feet away
- R.M.#2 - S01°W, 29.08 feet - with steel sign post, 1.67 feet away
- NE corner house #443 - S04°W, 44.26 feet
- NE corner house #442 - S53°E, 69.83 feet

SEE SKETCH ON BACK

Signed by John R Garske  
Surveyor's Michigan License No. 28410

Date 8/29/94

47-47 - I-9



SURVEY &  
REMONUMENTATION

SEP 29 1994

COMMISSION