

SURVEY & REMONUMENTATION

JUN 29 1995

COMMISSION

LAND CORNER RECORDATION CERTIFICATE
Filing Requirement of Act 74, Mich. P.A. 1970

For corners in

Gogebic (County)	Located In:	Corner Code #
1. Public Land Survey	S-26 T 47N R 47W	I-10
	T _____ R _____	_____
	T _____ R _____	_____
	T _____ R _____	_____
2. Property Controlling in Section	S _____ T _____ R _____	_____
	S _____ T _____ R _____	_____
3. Miscellaneous Property in Sec.	S _____ T _____ R _____	_____
	S _____ T _____ R _____	_____

Register's Office }
Gogebic County } ss.

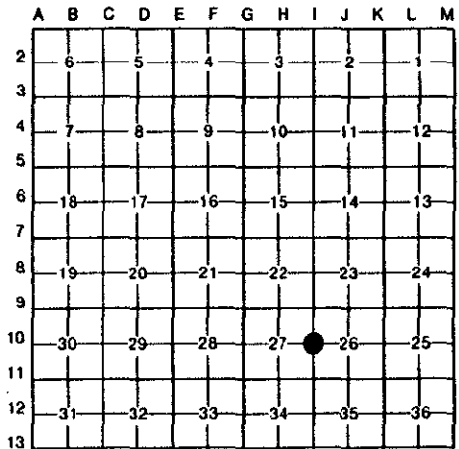
Received for record the
12th day of APRIL
A. D. 1995 at 1:15 o'clock
P. m., and recorded in
Liber 5 of CORNERS
on page 233
Ramona Collins, Deputy
Register of Deeds

Register of Deeds Stamp & File Number

4. Lot No. _____, Recorded Plat _____
5. Private Claims _____

One-quarter corner common to Sections 27 and 26, T47N, R47W.

I, John R. Garske, in a field survey on APRIL 4, 1995, do hereby certify that under requirements of P.A. 74, Michigan P.A. of 1970, the corner points mentioned in lines 1 and 2 above were in conformance with regulations and rules therefore as required in the current manual of survey instructions of the United States Department of the Interior, Bureau of Land Management or by a decree of a Court of Law and/or that the corner points mentioned in lines 3, 4 and 5 above were in conformance with the rules of the Michigan Board of Land Surveyors or by a Decree of a Court of Law; established, re-established, monumented, re-monumented, recovered, found as expressed below:



NOTE: Not more than 4 corners, all in the same town and range, may be recorded on this certificate.

A. Description of original monument and accessories and/or subsequent restoration:

- On August 26, 1848, William Ives set a post from which a 12" cedar bears S42°E, 7 links and a 8" cedar - N37°W, 12 links.
- 1902 plat of Nelson's Addition to the City of Ironwood shows section line tie to north 1/16 corner.
- 1917 railroad map shows corner position.
- 1919 plat of Cloverland Addition to the City of Ironwood shows corner position.

B. Description of corner evidence found and/or method applied in restoring or reestablishing corner:

No evidence of corner position found as corner is located in large cattail swamp with stnding water 2'+ deep. Reestablished corner position by single proportionate method. The corner is positioned on line and midway between the section corner common to Sections 23, 24, 25 and 26 and Sections 25, 26, 35 and 36.

This corner position checks well with plat dimensions and a 1970 era survey by Tom Nelson.

Record research on file with Register of Deeds.

PEER GROUP APPROVED
Richard D. Duda 4/6/95
COUNTY REPRESENTATIVE

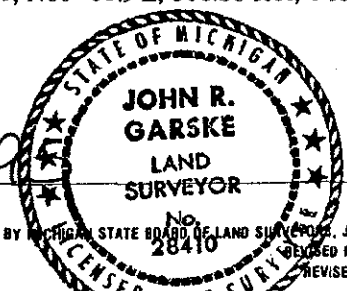
C. Description of monument for corner and accessories established to perpetuate locating the position of the corner:

Unable to set corner due to unaccessible swamp. Set two (2) witness corners on abandoned railroad grade. Witness corners consisting of 2 1/2" diameter x 30" long aluminum pipes with 3 1/4" diameter aluminum caps stamped:

- W.C. 1- County Remonumentation; T47N, R47W; W.C.; S-27; S-26; 1/4; 1995; RLS 28410; N00°-00.9'E, 218.05 feet; 6 foot steel rail with sign on line to north - 0.95 feet.
- W.C. 2- County Remonumentation; T47N, R47W; W.C.; S-27; S-26; 1/4; 1995; RLS 28410; N00°-00.9'E, 316.36 feet; 6 foot steel rail with sign on line to south 0.95 feet.

SEE SKETCH ON BACK

Signed by John R. Garske Date 4-6-95
Surveyor's Michigan License No. 28410



FORM APPROVED BY MICHIGAN STATE BOARD OF LAND SURVEYORS, JAN. 28, 1971
REVISED MAY 14, 1975
REVISED JAN., 1983

SKETCH:

1/4 COR. S-26 & S-27
T47N, R47W

