

**SURVEY & REMONUMENTATION**

SEP 29 1994

For corners in COMMISSION  
Gogebic  
(County)

**LAND CORNER RECORDATION CERTIFICATE**  
Filing Requirement of Act 74, Mich. P.A. 1970

Register's Office }  
Gogebic County } ss.

Received for record the  
16 day of SEPT  
A. D. 1994 at 4:00 o'clock  
P m., and recorded in  
Liber 5 of CORNER  
on page 122  
Ramona Collins, Deputy  
Register of Deeds

	Located In:	Corner Code #
1. Public Land Survey S-14	T <u>47N</u> R <u>47W</u>	<u>J-7</u>
	T _____ R _____	_____
	T _____ R _____	_____
	T _____ R _____	_____
2. Property Controlling in Section	S _____ T _____ R _____	_____
	S _____ T _____ R _____	_____
3. Miscellaneous Property in Sec.	S _____ T _____ R _____	_____
	S _____ T _____ R _____	_____
4. Lot No. _____, Recorded Plat _____		
5. Private Claims _____		

Register of Deeds Stamp & File Number

One-quarter corner common to Sections 14 & 23, T47N, R47W.

I, John R. Garske, in a field survey on \_\_\_\_\_, 19 94, do hereby certify that under requirements of P.A. 74, Michigan P.A. of 1970, the corner points mentioned in lines 1 and 2 above were in conformance with regulations and rules therefore as required in the current manual of survey instructions of the United States Department of the Interior, Bureau of Land Management or by a decree of a Court of Law and/or that the corner points mentioned in lines 3, 4 and 5 above were in conformance with the rules of the Michigan Board of Land Surveyors or by a Decree of a Court of Law, established, re-established, monumented, re-monumented, recovered, found as expressed below:

	A	B	C	D	E	F	G	H	I	J	K	L	M
2	6	5	4	3	2	1							
3													
4	7	8	9	10	11	12							
5													
6	18	17	16	15	14	13							
7													
8	19	20	21	22	23	24							
9													
10	30	29	28	27	26	25							
11													
12	31	32	33	34	35	36							
13													

NOTE: Not more than 4 corners, all in the same town and range, may be recorded on this certificate.

A. Description of original monument and accessories and/or subsequent restoration:

Original survey by William Ives, D.S., in 1848. Set wood post. Original bearing trees: Fir 10" - S39°E, 11 links; spruce 7" - N30°W, 16 links.

The corner position was set by Ewart Muller, RLS 15408 in July 1977 by using Michigan Department of State Highway Plans for US-2 and nearby plat monuments and consisted of a P.K. nail set in the pavement. He recorded the corner in Liber 1 of land corners, P. 329. Accessories: P. pole - N42°W, 55.47 feet; P. pole - S65°E, 56.45 feet; Pine 8" - N04°E, 78.65 feet.

B. Description of corner evidence found and/or method applied in restoring or reestablishing corner:

Only one of Muller's accessories is remaining at this time. I set a P.K. nail marking the corner position using information gathered from surveys that had previously tied into the corner which checks with the P. Pole at S65°E reasonably well. I updated the corner as noted below to bring it up to county and state specifications.

Act 74 research on file with County Register of Deeds Office.

**PEER GROUP**

**Approved**

Richard L. Drabn

9/14/94

C. Description of monument for corner and accessories established to perpetuate locating the position of the corner:

Using the ~~found~~ P.K. nail at the corner locaion, I established the following reference objects: Two reference monuments consisting of a 3/4" rebar with a 3" aluminum cap set flush with the asphalt and stamped to indicate the corner position as follows: RM#1 - N01°E, 45.50 feet; RM#2 - S01°E, 25.02 feet; P. pole - S65°E, 56.39 feet; NW corner foundation of carwash sign - S61°W, 56.56 feet.

SEE SKETCH ON BACK



Signed by John R. Garske  
Surveyor's Michigan License No. 28410

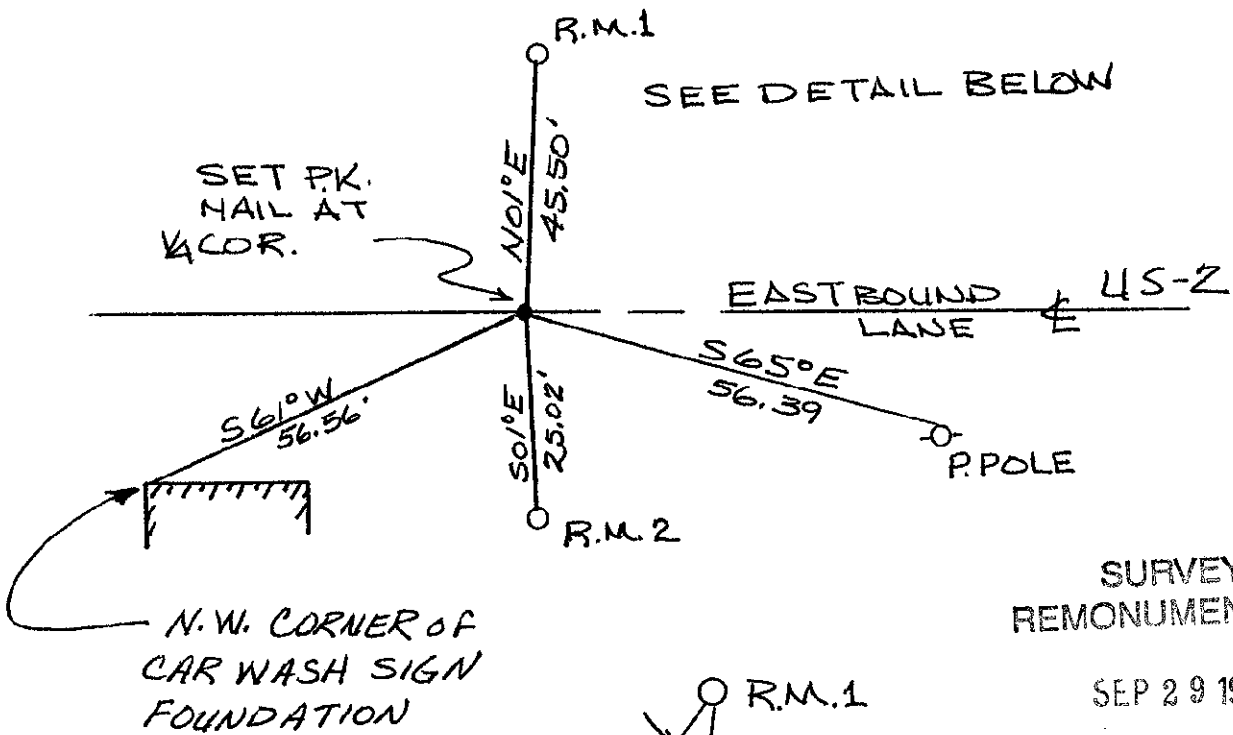
Date 8/30/94

SKETCH:



BEARINGS ARE MAGNETIC

NO SCALE

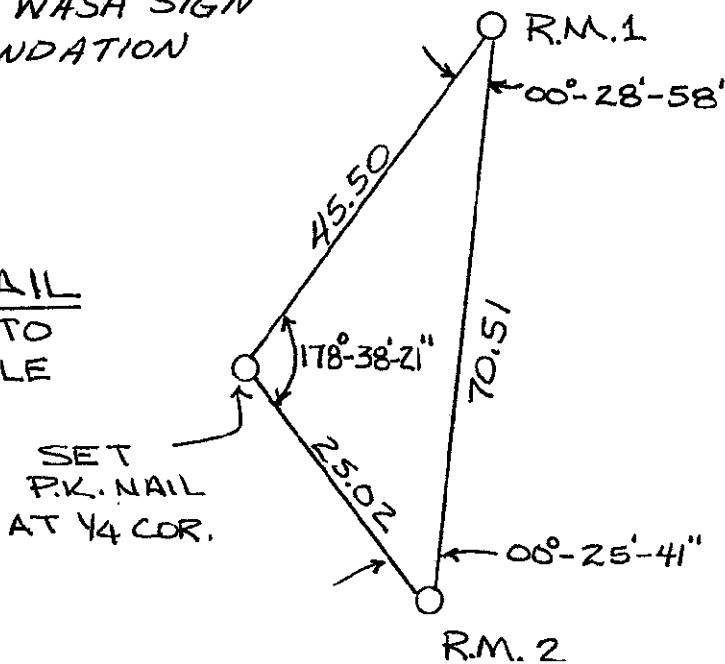


SURVEY & REMONUMENTATION

SEP 29 1994

COMMISSION

DETAIL  
NOT TO SCALE



47-47- J-7