

SEP 29 1994

COMMISSION

LAND CORNER RECORDATION CERTIFICATE
Filing Requirement of Act 74, Mich. P.A. 1970

Register's Office } ss.
Gogebic County }

Received for record the
16 day of SEPT
A. D. 1994 at 4:10 o'clock
P m., and recorded in
Liber 5 of CORNERS
on page 134
Kamara Collins, Deputy
Register of Deeds

For corners in

Gogebic
(County)

Located In:

Corner Code -#

- 1. Public Land Survey S-26 T 47N R 47W J-11
2. Property Controlling in Section S T R
3. Miscellaneous Property in Sec. S T R
4. Lot No. Recorded Plat
5. Private Claims

Register of Deeds Stamp & File Number

One-quarter corner common to Sections 26 & 35

I, John R. Garske, in a field survey on July, 19 94, do hereby certify that under requirements of P.A. 74, Michigan P.A. of 1970, the corner points mentioned in lines 1 and 2 above were in conformance with regulations and rules therefore as required in the current manual of survey instructions of the United States Department of the Interior, Bureau of Land Management or by a decree of a Court of Law and/or that the corner points mentioned in lines 3, 4 and 5 above were in conformance with the rules of the Michigan Board of Land Surveyors or by a Decree of a Court of Law; established, re-established, monumented, re-monumented, recovered, found as expressed below:

NOTE: Not more than 4 corners, all in the same town and range, may be recorded on this certificate.

A. Description of original monument and accessories and/or subsequent restoration:

Original survey by William Ives in 1848. Set wood post. Original bearing trees: Hemlock 14" - N81°E, 30 links; Hemlock 14" - S64°W, 29 links.

The one-quarter corner position was set by John P. Goss, RLS 23509 in July 1979 using single proportionate measurement and consists of a 1" x 30" iron pin. The corner is recorded in liber 2 of land corners P. 486. Accessories: P. pole - N45°E, 33.51'; P. pole - N47°W, 35.80'; P. pole - S30°W, 58.63'.

B. Description of corner evidence found and/or method applied in restoring or reestablishing corner:

I re-established the corner from witnesses on Goss' recordation certificate. The locator indicated a strong reading at the appropriate corner location. I then updated the corner as noted below to bring it up to county and state specifications.

Act 74 research on file with County Register of Deeds Office.

PEER GROUP

Approved

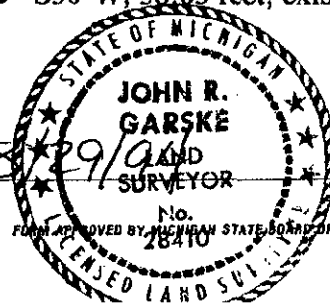
Richard P. Drabin

9/14/94

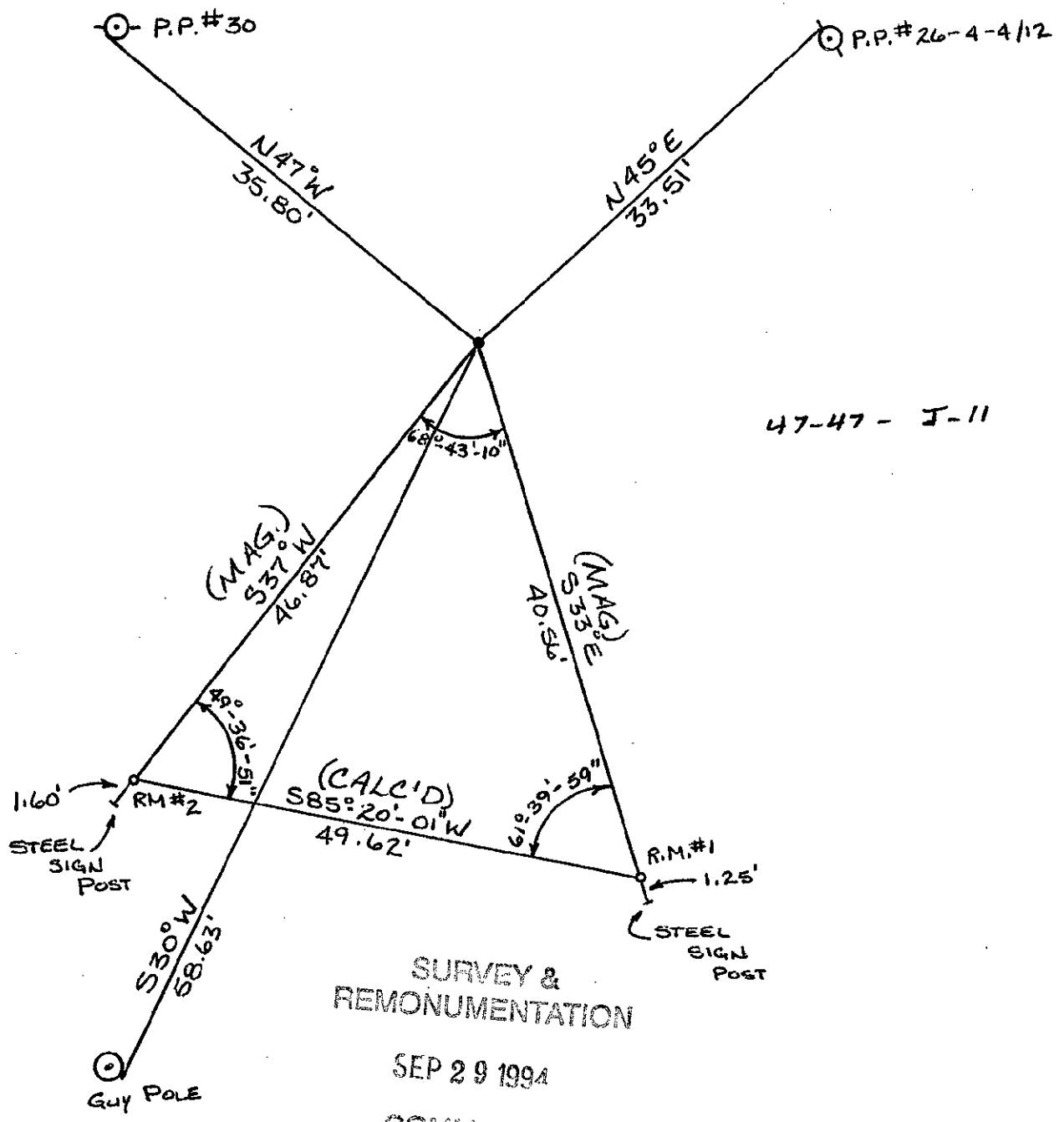
C. Description of monument for corner and accessories established to perpetuate locating the position of the corner:

Using the ties from Goss' recordation certificate, I set a P.K. nail at the one-quarter corner location from which I established the following reference objects: Two reference monuments consisting of a 2 1/2" x 30" aluminum pipe with a 3 1/4" aluminum cap stamped to indicate the corner position as follows: R.M. #1-S33°E, 40.56 feet - with steel sign post 1.25 feet away; R.M. #2-S37°W, 46.87 feet - with steel sign post 1.60 feet away; existing guy pole - S30°W, 58.63 feet; existing P. pole - N47°W, 35.80 feet; existing P. pole - N45°E, 33.51 feet.

Signed by John R. Garske SEE SKETCH ON BACK Date 8/29/94
Surveyor's Michigan License No. 28410



SKETCH  
NO SCALE



47-47 - J-11

SURVEY &  
REMONUMENTATION

SEP 29 1994

CONRADSON