

**SURVEY &  
REMONUMENTATION**

SEP 29 1994

COMMISSION

**LAND CORNER RECORDATION CERTIFICATE**  
Filing Requirement of Act 74, Mich. P.A. 1970

For corners in

Gogebic  
(County)

Located In:

Corner Code #

- |                                    |                           |            |
|------------------------------------|---------------------------|------------|
| 1. Public Land Survey S-23         | T <u>47N</u> R <u>47W</u> | <u>K-9</u> |
|                                    | T _____ R _____           | _____      |
|                                    | T _____ R _____           | _____      |
|                                    | T _____ R _____           | _____      |
| 2. Property Controlling in Section | S _____ T _____ R _____   | _____      |
|                                    | S _____ T _____ R _____   | _____      |
| 3. Miscellaneous Property in Sec.  | S _____ T _____ R _____   | _____      |
|                                    | S _____ T _____ R _____   | _____      |

Register's Office } ss.  
Gogebic County }

Received for record the  
16 day of SEPT  
A. D. 1994 at 4:30 o'clock  
P m., and recorded in  
Liber 5 of CORNERS  
on page 130  
Ramona Collins, Deputy  
Register of Deeds

Register of Deeds Stamp & File Number

4. Lot No. \_\_\_\_\_, Recorded Plat \_\_\_\_\_  
5. Private Claims \_\_\_\_\_

Section corner common to Sections 23, 24, 25 & 26, T47N, R47W

I, John R. Garske, in a field survey on July, 19 94, do hereby certify that under requirements of P.A. 74, Michigan P.A. of 1970, the corner points mentioned in lines 1 and 2 above were in conformance with regulations and rules therofore as required in the current manual of survey instructions of the United States Department of the Interior, Bureau of Land Management or by a decree of a Court of Law and/or that the corner points mentioned in lines 3, 4 and 5 above were in conformance with the rules of the Michigan Board of Land Surveyors or by a Decree of a Court of Law; established, re-established, monumented, re-monumented, recovered, found as expressed below:

**NOTE: Not more than 4 corners, all in the same town and range, may be recorded on this certificate.**

A	B	C	D	E	F	G	H	I	J	K	L	M
2	6	5	4	3	2	1						
3												
4	7	8	9	10	11	12						
5												
6	18	17	16	15	14	13						
7												
8	10	20	21	22	23	24						
9												
10	30	29	28	27	26	25						
11												
12	31	32	33	34	35	36						
13												

A. Description of original monument and accessories and/or subsequent restoration:

Original survey by William Ives, D.S. in 1848. Set wooden post. Original bearing trees: Hemlock 12" - S26°E, 22 links; Hemlock 12" - N21°W, 32 links.

The corner position was found by Ewart Muller, RLS 15408 in May of 1977 consisting of a 4" square concrete monument using witness ties furnished by the City of Ironwood Engineer's Office. He recorded the corner in Liber 1 of land comers, P. 313. Accessories: NE corner house foundation - S45°W, 54.85 feet; P. pole - S45°E, 38.16 feet; SW corner garage - N50°E, 45.19 feet.

B. Description of corner evidence found and/or method applied in restoring or reestablishing corner:

I found the 4" concrete monument marking the corner position which checks with the witnesses on the certificate. I updated the corner as noted below to bring it up to county and state specifications.

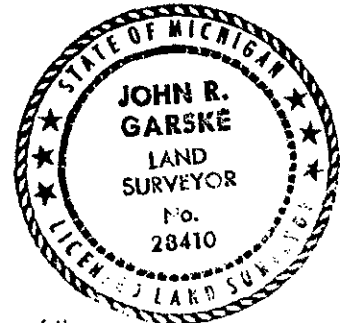
Act 74 research on file with County Register of Deeds Office.

**PEER GROUP**

**Approved**

Richard P. Orphan

9/14/94



C. Description of monument for corner and accessories established to perpetuate locating the position of the corner:

Since the concrete monument was broken off at the top, I rebuilt a new top with concrete and set a concrete nail in the top using the ties from the recordation certificate. I established the following reference objects: Two reference monuments consisting of a 2 1/2" x 30" aluminum pipe with a 3 1/4" aluminum cap stamped to indicate the corner position as follows: R.M. #1 -N63°W, 26.94 feet with steel sign post 1.45 feet away; R.M. #2 - S64°E, 24.49 feet with steel sign post 1.48 feet away; S.W. corner garage - N50°E, 45.19 feet; P.pole - S45°E, 38.16 feet.

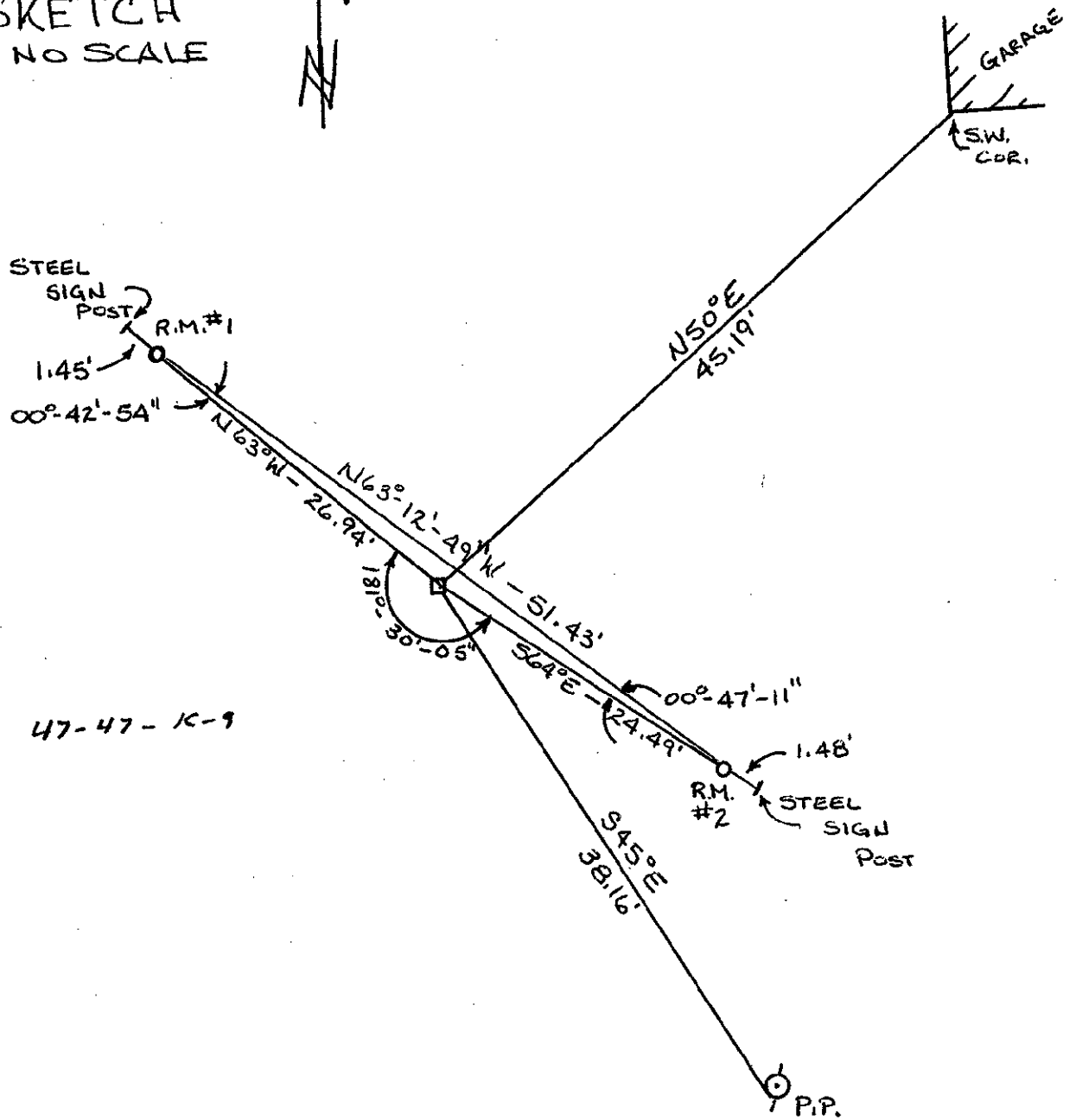
SEE SKETCH ON BACK

Signed by John R. Garske

Date 8/29/94

Surveyor's Michigan License No. 28410

SKETCH  
NO SCALE



47-47-K-9

SURVEY &  
REMONUMENTATION

SEP 29 1994

COMMISSION