

**SURVEY & REMONUMENTATION**

SEP 29 1994

COMMISSION

**LAND CORNER RECORDATION CERTIFICATE**  
Filing Requirement of Act 74, Mich. P.A. 1970

Register's Office } ss.  
Gogebic County }

Received for record the  
16 day of SEPT  
A. D. 1994 at 4:10 o'clock  
7 m., and recorded in  
Liber 5 of CORNERS

on page 137  
Ramona Collins, Deputy  
Register of Deeds

Register of Deeds Stamp & File Number

For corners in

Gogebic  
(County)

Located In:

Corner Code #

- |                                    |                           |             |
|------------------------------------|---------------------------|-------------|
| 1. Public Land Survey S-35         | T <u>47N</u> R <u>47W</u> | <u>K-12</u> |
|                                    | T _____ R _____           | _____       |
|                                    | T _____ R _____           | _____       |
|                                    | T _____ R _____           | _____       |
| 2. Property Controlling in Section | S _____ T _____ R _____   | _____       |
|                                    | S _____ T _____ R _____   | _____       |
| 3. Miscellaneous Property in Sec.  | S _____ T _____ R _____   | _____       |
|                                    | S _____ T _____ R _____   | _____       |

4. Lot No. \_\_\_\_\_, Recorded Plat \_\_\_\_\_  
5. Private Claims \_\_\_\_\_

One-quarter corner common to Sections 35 & 36

I, John R. Garske, in a field survey on July, 19 94, do hereby certify that under requirements of P.A. 74, Michigan P.A. of 1970, the corner points mentioned in lines 1 and 2 above were in conformance with regulations and rules therefore as required in the current manual of survey instructions of the United States Department of the Interior, Bureau of Land Management or by a decree of a Court of Law and/or that the corner points mentioned in lines 3, 4 and 5 above were in conformance with the rules of the Michigan Board of Land Surveyors or by a Decree of a Court of Law; established, re-established, monumented, re-monumented, recovered, found as expressed below:

	A	B	C	D	E	F	G	H	I	J	K	L	M
2	6	5	4	3	2	1							
3													
4	7	8	9	10	11	12							
5													
6	18	17	16	15	14	13							
7													
8	19	20	21	22	23	24							
9													
10	30	29	28	27	26	25							
11													
12	31	32	33	34	35	36							
13													

**NOTE: Not more than 4 corners, all in the same town and range, may be recorded on this certificate.**

A. Description of original monument and accessories and/or subsequent restoration:

Original survey by William Ives in 1848. Set wooden post. Original bearing trees: Sugar 8" - S50°E, 19 links; Fir 8" - N65°W, 14 links.

The corner was set by John R. Garske, RLS 28410, in February 1983 using occupation lines and consisting of a P.K. nail at the road intersection. The corner is recorded in liber 2 of land corners, P. 302. Accessories: top of hydrant - N18°E - 77.52'; P. Pole - S53°E - 26.05'.

B. Description of corner evidence found and/or method applied in restoring or reestablishing corner:

I found a P.K. nail marking the corner location which checks with witnesses from my previous recordation certificate and updated the corner as noted below to bring it up to county and state specifications.

Act 74 research on file with County Register of Deeds Office.

**PEER GROUP**

**Approved**

Richard L. Drahm

9/14/94

C. Description of monument for corner and accessories established to perpetuate locating the position of the corner:

I replaced the found P.K. nail with a cotton gin spike and established the following reference objects: Two reference monuments consisting of a 2 1/2" x 30" aluminum pipe with a 3 1/4" aluminum cap stamped to indicate the corner position as follows: R.M. #1-N55°E - 43.05 feet with steel sign post 1.96 feet away; R.M. #2-S72°W - 32.78 feet with steel sign post 1.25 feet away; existing top of hydrant - N18°E - 77.52 feet; existing P. Pole - S53°E - 26.05 feet.

SEE SKETCH ON BACK

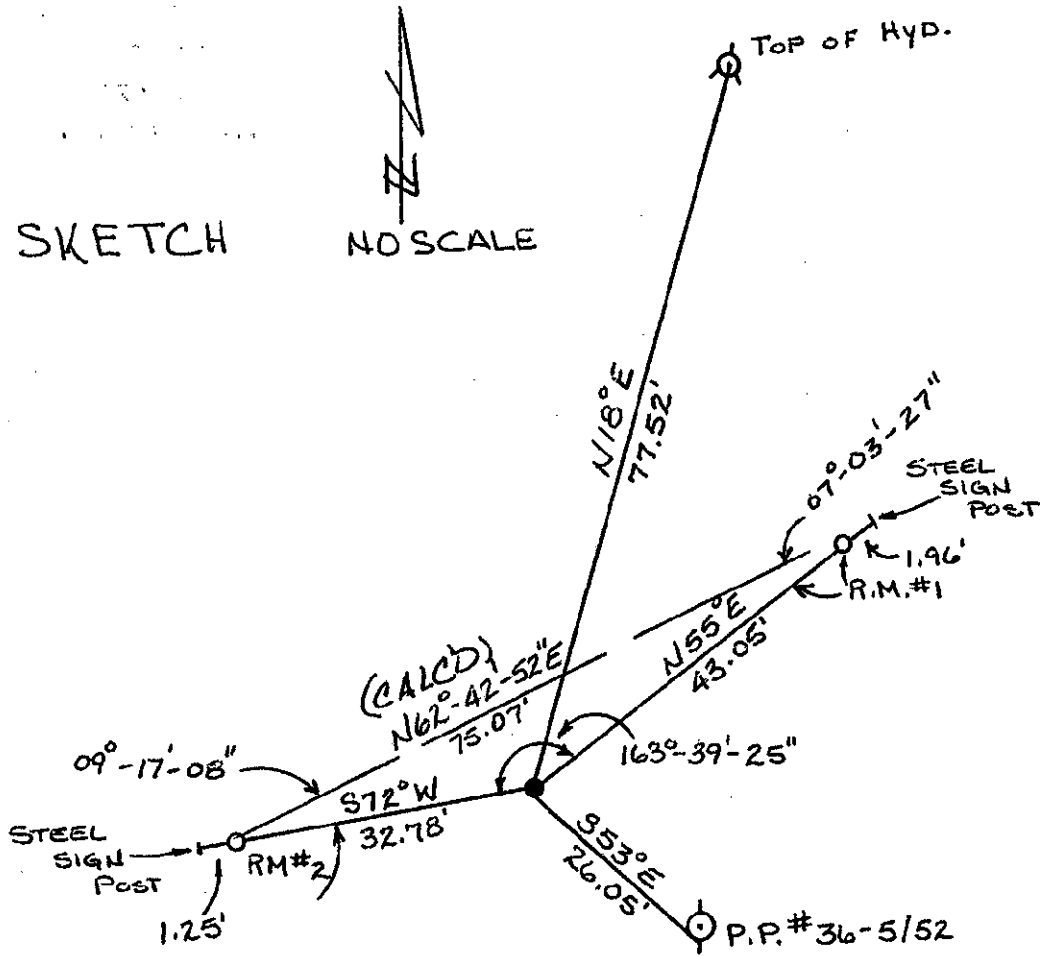
Signed by John R. Garske Date 8/29/94  
Surveyor's Michigan License No. 28410



FORM APPROVED BY MICHIGAN STATE BOARD OF LAND SURVEYORS, JAN. 28, 1971  
REVISED MAY 14, 1973  
REVISED JAN., 1983

SKETCH

NO SCALE



NOTE: BEARINGS ARE MAGNETIC.

47-47-K-12

SURVEY &  
REMONUMENTATION

SEP 29 1994

COMMISSION