

SURVEY & REMONUMENTATION

SEP 29 1994

COMMISSION

LAND CORNER RECORDATION CERTIFICATE
 Filing Requirement of Act 74, Mich. P.A. 1970

Register's Office } ss.
 Gogebic County }

Received for record the
16 day of SEPT.
 A. D. 1994 at 4:10 o'clock
P m., and recorded in
 Liber 5 of CORNERS
 on page 140
Ramona Collins, Deputy
 Register of Deeds

Register of Deeds Stamp & File Number

For corners in Gogebic (County)

1. Public Land Survey	S-35	T <u>47N</u> R <u>47W</u>	<u>K-13</u>
		T _____ R _____	_____
		T _____ R _____	_____
		T _____ R _____	_____
2. Property Controlling in Section	S _____	T _____ R _____	_____
	S _____	T _____ R _____	_____
3. Miscellaneous Property in Sec.	S _____	T _____ R _____	_____
	S _____	T _____ R _____	_____
4. Lot No. _____, Recorded Plat _____			
5. Private Claims _____			

Section corner common to Sections 35, 36, 1 & 2

I, John R. Garske, in a field survey on July, 1994, do hereby certify that under requirements of P.A. 74, Michigan P.A. of 1970, the corner points mentioned in lines 1 and 2 above were in conformance with regulations and rules therefore as required in the current manual of survey instructions of the United States Department of the Interior, Bureau of Land Management or by a decree of a Court of Law and/or that the corner points mentioned in lines 3, 4 and 5 above were in conformance with the rules of the Michigan Board of Land Surveyors or by a Decree of a Court of Law; established, re-established, monumented, re-monumented, recovered, found as expressed below:

NOTE: Not more than 4 corners, all in the same town and range, may be recorded on this certificate.

	A	B	C	D	E	F	G	H	I	J	K	L	M
2	6	5	4	3	2	1							
3													
4	7	8	9	10	11	12							
5													
6	18	17	16	15	14	13							
7													
8	19	20	21	22	23	24							
9													
10	30	29	28	27	26	25							
11													
12	31	32	33	34	35	36							

A. Description of original monument and accessories and/or subsequent restoration:

Original survey by William A. Burt in 1847. Set cedar post. Original bearing trees: Y. birch 10" - N20°E, 3 links; Y. birch 10" - N49°W - 40 links.

The corner position was found by John P. Goss, RLS 23509 and John R. Garske, RLS 28410, in February 1983 consisting of a 1" iron rod. The corner is recorded in liber 2 of land corners Pages 306-307. Accessories: top of hydrant - N18°E, 71.60'; P. Pole - N40°E, 48.83'; P. Pole - S42°W, 35.09'.

B. Description of corner evidence found and/or method applied in restoring or reestablishing corner:

I found a 1" iron rod marking the corner location which checks with witnesses from my previous recordation certificate and updated the corner as noted below to bring it up to county and state specifications.

Act 74 research on file with County Register of Deeds Office.

PEER GROUP

Approved

Richard P. Dralun

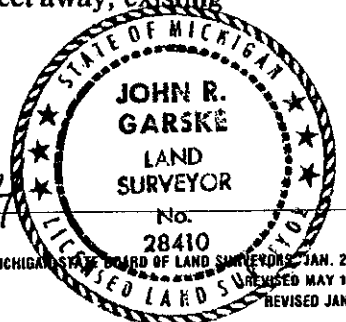
9/14/94

C. Description of monument for corner and accessories established to perpetuate locating the position of the corner:

Using the existing iron rod at the corner location, I established the following reference objects: Two reference monuments consisting of a 2 1/2" x 30" aluminum pipe with a 3 1/4" aluminum cap stamped to indicate the corner position as follows: R.M. #1-N47°W, 50.79 feet - with steel sign post 1.64 feet away; R.M. #2 - S61°W, 35.57 feet - with steel sign post 1.44 feet away; existing top of hydrant - N18°E, 71.60 feet; existing P. pole - N40°E, 48.83 feet.

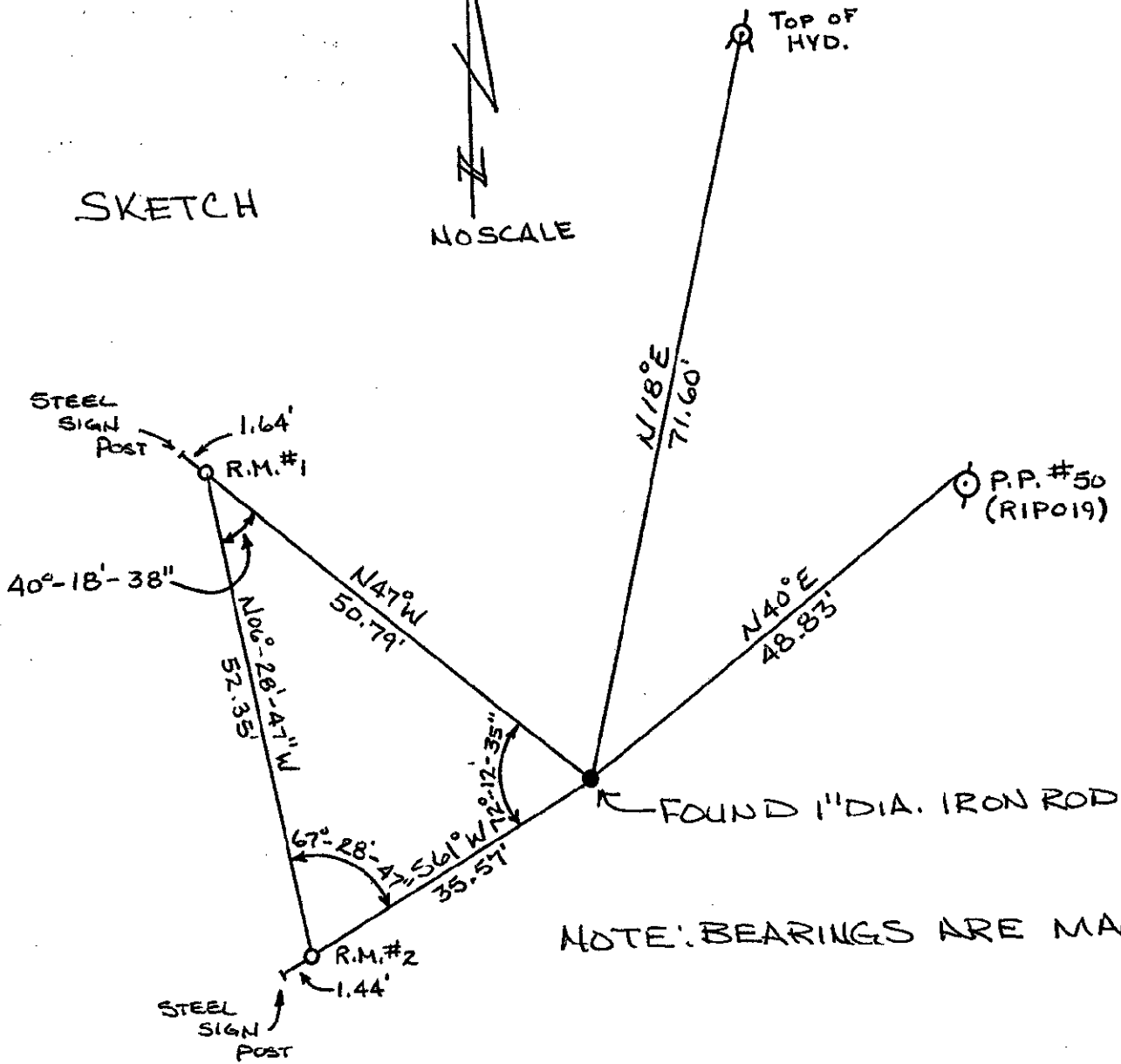
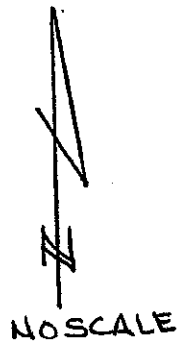
SEE SKETCH ON BACK

Signed by John R. Garske Date 8/29/94
 Surveyor's Michigan License No. 28410



FORM APPROVED BY MICHIGAN STATE BOARD OF LAND SURVEYORS JAN. 29, 1971
 REVISED MAY 14, 1976
 REVISED JAN., 1983

SKETCH



NOTE: BEARINGS ARE MAGNETIC.

47-47-K-13

SURVEY & REMONUMENTATION

SEP 29 1994

COMMISSION