

SURVEY & REMONUMENTATION

SEP 29 1994

COMMISSION

Register's Office } ss.
Gogebic County }

LAND CORNER RECORDATION CERTIFICATE
Filing Requirement of Act 74, Mich. P.A. 1970

Received for record the
16 day of SEPT

For corners in

Gogebic
(County)

Located In:

Corner Code #

- | | | |
|------------------------------------|---------------------------|------------|
| 1. Public Land Survey | T <u>47N</u> R <u>47W</u> | <u>M-7</u> |
| | T _____ R _____ | _____ |
| | T _____ R _____ | _____ |
| | T _____ R _____ | _____ |
| 2. Property Controlling in Section | S _____ T _____ R _____ | _____ |
| | S _____ T _____ R _____ | _____ |
| 3. Miscellaneous Property in Sec. | S _____ T _____ R _____ | _____ |
| | S _____ T _____ R _____ | _____ |

A. D. 1994 at 4:00 o'clock
P m., and recorded in
Liber BT of CORNER

on page 124
Ramona Collins, Deputy
Register of Deeds

Register of Deeds Stamp & File Number

4. Lot No. _____, Recorded Plat _____
5. Private Claims _____

Section corner common to Sections 13 & 24, T47N, R47W and Sections 18 & 19, T47N, R46W.

I, John R. Garske, in a field survey on June 23, 1994, do hereby certify that under requirements of P.A. 74, Michigan P.A. of 1970, the corner points mentioned in lines 1 and 2 above were in conformance with regulations and rules therefore as required in the current manual of survey instructions of the United States Department of the Interior, Bureau of Land Management or by a decree of a Court of Law and/or that the corner points mentioned in lines 3, 4 and 5 above were in conformance with the rules of the Michigan Board of Land Surveyors or by a Decree of a Court of Law; established, re-established, monumented, re-monumented, recovered, found as expressed below:

NOTE: Not more than 4 corners, all in the same town and range, may be recorded on this certificate.

	A	B	C	D	E	F	G	H	I	J	K	L	M
2	6	5	4	3	2	1							
3													
4	7	8	9	10	11	12							
5													
6	16	17	16	15	14	13							
7													
8	19	20	21	22	23	24							
9													
10	30	29	28	27	26	25							
11													
12	31	32	33	34	35	36							
13													

A. Description of original monument and accessories and/or subsequent restoration:

- On September 6, 1847, William A. Burt set maple post corner of Sections 13 and 24 from which a spruce 12" bears S17°E, 45 links and a spruce 12" bears S30°W, 52 links.
- On June 17, 1851, Austin Burt tied into corner. Established bearing trees: Fir 6" - N73°W, 19 links; spruce 8" - N78°E, 8 links. No original evidence could be found due to road construction.
- On May 21, 1986 and August 1, 1991, J. Goss, RLS 23509 restored corner from ties by M.D.O.T. Highway plans for US-2. Set 1 1/4" iron pin as recorded on Liber 2, P. 779 and Liber 4, P. 4. Accessories: P. pole - S78°W, 51.13 feet; P. pole - N88°E, 89.35 feet; P. pole - S11°E - 111.30 feet.

B. Description of original evidence found and/or method applied in restoring or reestablishing corner:

I found a P.K. nail at corner position which checked with Goss recordation certificates as described above and updated the corner as noted below to bring it up to county and state specifications.

Act 74 research on file with County Register of Deeds Office.

PEER GROUP

Approved

Richard R. Drahn

9/14/94

C. Description of monument for corner and accessories established to perpetuate locating the position of the corner:

Using the found P.K. nail at the corner location, I established the following reference objects: Two reference monuments consisting of a 2 1/2" x 30" aluminum pipe with a 3 1/4" aluminum cap stamped to indicate the corner position as follows: RM#1 - S33°W, 55.24 feet with a steel sign post 1.57 feet away; RM#2 - S41°E, 56.53 feet with a steel sign post 1.62 feet away; P. pole #18 - 07/06 - N88°E, 89.35 feet; P. pole #19 - 8/92 - S11°E, 111.30 feet.

SEE SKETCH ON BACK

Signed by

John R. Garske

Date

8/30/94

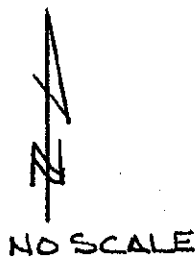
Surveyor's Michigan License No. 28410

FORM APPROVED BY MICHIGAN STATE BOARD OF LAND SURVEYORS, JAN. 28, 1971
REVISED MAY 14, 1975
REVISED JAN., 1983

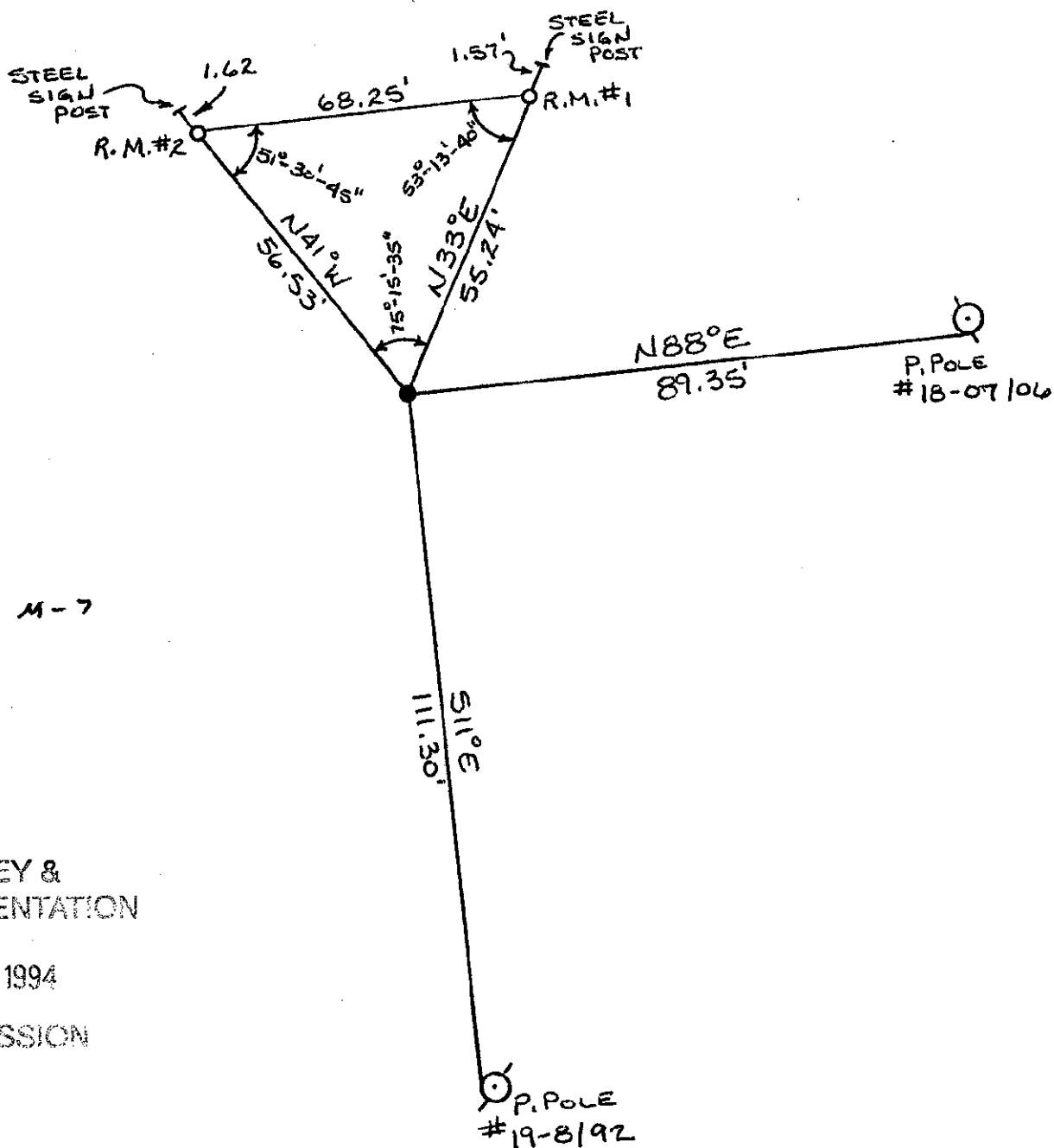
FED No. N-25 124



SKETCH



NOTE: BEARINGS ARE MAGNETIC



47-47, M-7

SURVEY &
REMONUMENTATION

SEP 29 1994

COMMISSION