

LAND CORNER RECORDATION CERTIFICATE
Filing Requirement of Act 74, Mich. P.A. 1970

Register's Office }
 Gogebic County } ss.

Received for record the
21st day of JULY
 A. D. 1995 at 1:50 o'clock
P M., and recorded in
 Liber 5 of CORNERS
 on page 285,
Ramona Collins, Deputy
 Register of Deeds

Register of Deeds Stamp & File Number

For corners in _____

 (County)

Located In: _____ Corner Code # _____

1. Public Land Survey
 T .47N R 47W _____ M-10
 T _____ R _____
 T 47N R 46W _____ A-10
 T _____ R _____

2. Property Controlling
 in Section S _____ T _____ R _____
 S _____ T _____ R _____

3. Miscellaneous
 Property in Sec. S _____ T _____ R _____
 S _____ T _____ R _____

4. Lot No. _____, Recorded Plat _____

5. Private Claims _____

	A	B	C	D	E	F	G	H	I	J	K	L	M
2	6	5	4	3	2	1							
3													
4	7	8	9	10	11	12							
5													
6	18	17	16	15	14	13							
7													
8	19	20	21	22	23	24							
9													
10	30	29	28	27	26	25							
11													
12	31	32	33	34	35	36							
13													

One-quarter corner to Sections 25 and 30, T47N, R47-40W

I, John R. Garske, in a field survey on March 28, 1995, do hereby certify that under requirements of P.A. 74, Michigan P.A. of 1970, the corner points mentioned in lines 1 and 2 above were in conformance with regulations and rules therefore as required in the current manual of survey instructions of the United States Department of the Interior, Bureau of Land Management or by a decree of a Court of Law and/or that the corner points mentioned in lines 3, 4 and 5 above were in conformance with the rules of the Michigan Board of Land Surveyors or by a Decree of a Court of Law; established, re-established, monumented, re-monumented, recovered, found as expressed below:

NOTE: Not more than 4 corners, all in the same town and range, may be recorded on this certificate.

A. Description of original monument and accessories and/or subsequent restoration:

- On September 6, 1847, William Austin Burt set a hemlock from which a 20" hemlock bears S53°E, 23 links and a 10" sugar - S58°W, 13 links.

B. Description of corner evidence found and/or method applied in restoring or reestablishing corner:

No original evidence could be found due to logging and farming activity, also due to road and utility construction. I reestablished the corner at the centerline of South Davis Road at a proportionate measurement between the section corner common to Sections 24, 25, 19 and 30 and the section corner common to Sections 25, 36, 30 and 31. The corner sits in harmony with measurements to occupation lines, along with testimony by local residents, lead me to believe that this is the only possible position for this corner.

Record research form on file with Register of Deeds.

PEER GROUP APPROVED

Richard P. Doolan 7/18/95
 COUNTY REPRESENTATIVE

C. Description of monument for corner and accessories established to perpetuate locating the position of the corner:

I set a 3 1/4" diameter brass cap stamped: T47N, R47W, R46W; 1/4; S-25; S-30; 1995; RLS 28410, from which I established the following bearing trees and/or reference objects: Power Pole #30 - 8/50 - N43°E, 55.19 feet; high tension power pole - S54°W, 76.12 feet; 4" R. maple - N61°W, 39.61 feet; a reference monument consisting of a 2 1/2" diameter x 30" long aluminum pipe with a 3 1/4" diameter aluminum cap stamped: County Remonumentation; T47N, R47W, R46W; R.M.; 1/4; S-25; S-30; 1995; RLS 28410; N49°W, 41.26 feet with a 6 foot steel rail with sign 1.47 feet away.

SEE SKETCH ON BACK



Signed by John R. Garske Date 5/4/95
 Surveyor's Michigan License No. 28410

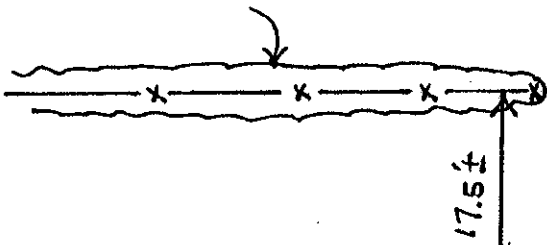


SKETCH:

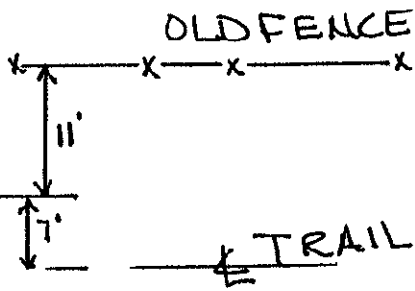
NO SCALE

1/4 COR 25 & 30
T41N, R41W

ROCK WALL & OLD FENCE



SOUTH DAVIS



TRAIL
SET 3/4" DIA.
BRASS CAP
IN P.V.M.T. &