

**SURVEY & REMONUMENTATION**

OCT 03 1996

COMMISSION

**LAND CORNER RECORDATION CERTIFICATE**  
**Filing Requirement of Act 74, Mich. P.A. 1970**

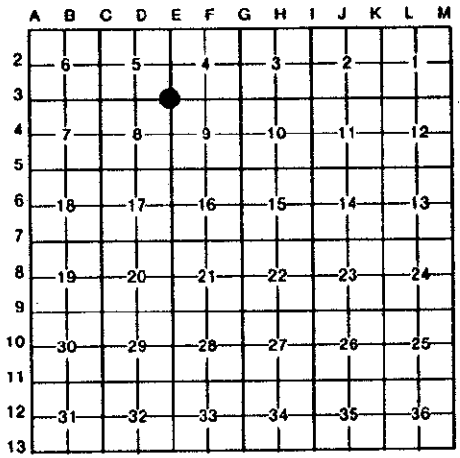
Register's Office }  
 Gogebic County } ss.

Received for record the  
23<sup>rd</sup> day of FEB  
 A. D. 1996 at 1:35 o'clock  
9 m., and recorded in  
 Liber 5 of CORNERS  
 on page 317  
*Ramona Collins Deputy*  
 Register of Deeds

Register of Deeds Stamp & File Number

For corners in

Gogebic (County)	Located In:	Corner Code #
1. Public Land Survey	T <u>48N</u> R <u>44</u> W	<u>E - 3</u>
	T _____ R _____	_____
	T _____ R _____	_____
	T _____ R _____	_____
2. Property Controlling in Section	S _____ T _____ R _____	_____
	S _____ T _____ R _____	_____
3. Miscellaneous Property in Sec.	S _____ T _____ R _____	_____
	S _____ T _____ R _____	_____
4. Lot No. _____, Recorded Plat _____		
5. Private Claims _____		



Sec. Cor. 4, 5, 8 & 9; T.48 N., R.44 W.

I, Richard L. Drahn in a field survey on November 13, 1995, do hereby certify that under requirements of P.A. 74, Michigan P.A. of 1970, the corner points mentioned in lines 1 and 2 above were in conformance with regulations and rules therefore as required in the current manual of survey instructions of the United States Department of the Interior, Bureau of Land Management or by a decree of a Court of Law and/or that the corner points mentioned in lines 3, 4 and 5 above were in conformance with the rules of the Michigan Board of Land Surveyors or by a Decree of a Court of Law; established, re-established, monumented, re-monumented, recovered, found as expressed below:

**NOTE: Not more than 4 corners, all in the same town and range, may be recorded on this certificate.**

A. Description of original monument and accessories and/or subsequent restoration:  
 Corner established by Austin Burt in 1848. Original B.T.s --- Hemlock 12" S.45 W. 03 links (1.98') --- Cedar 14" N.37 E. 14 links (9.24')  
 Corner restored by Donald D. Lappala, RLS 12585 on 8/14/68 from the remains of the two original bearing trees and from natural feature ties E and N. He set a 2" by 5' galvanized iron pipe monument with a 3" stamped brass cap and the following new bearing trees: --- 5" (8") Sugar Maple N.08 W. (N.08 W.) 29.8' (29.75') --- 12" Yellow Birch (14" dead) S.04 W. (S.06 W.) 28.4' (28.26') --- 13" (19") Cedar S.76 W. (S.76 W.) 20.0' (20.25')

B. Description of corner evidence found and/or method applied in restoring or reestablishing corner:  
 Corner recorded in Gogebic County in USFS Liber, Page E-9 on 3/31/69.  
 Act 74 research form on file with Gogebic County records.

Recovered the monument as described and the bearing trees as noted in parentheses above. No evidence remains of the original Hemlock bearing tree; no scribing remains on the original Cedar, now a decayed 18" cedar stump.

C. Description of monument for corner and accessories established to perpetuate locating the position of the corner:  
 Bearing objects referenced:  
 4" X 4" X 7' Cedar sign post S.05 E. 1.95'  
 6' Steel sign rail N.56 E. 1.80'

PEER GROUP APPROVED  
*Richard L. Drahn* 12/14/95  
 COUNTY REPRESENTATIVE



Signed by Richard L. Drahn Date December 12, 1995  
 Surveyor's Michigan License No. 21564