

**SURVEY & REMONUMENTATION**

JAN 22 1998

**SECTION**

**LAND CORNER RECORDATION CERTIFICATE**  
**Filing Requirement of Act 74, Mich. P.A. 1970**

Register's Office }  
 Gogebic County } ss.

Received for record the  
24<sup>th</sup> day of November  
 A. D. 1997 at 11:40 o'clock  
11 a.m., and recorded in  
 Liber 6 of CORNERS  
 on page 274  
*Ramona Collins Depitty*  
 Register of Deeds

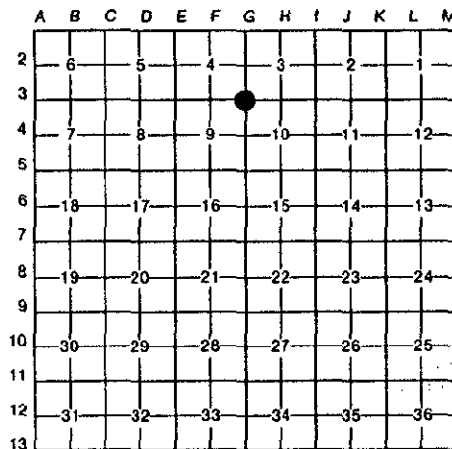
For corners in

<u>Gogebic</u> <small>(County)</small>	Located In:	Corner Code #
1. Public Land Survey	T48N R 44W	G-3
	T ___ R ___	___
	T ___ R ___	___
	T ___ R ___	___
2. Property Controlling in Section	S ___ T ___ R ___	___
	S ___ T ___ R ___	___
3. Miscellaneous Property in Sec.	S ___ T ___ R ___	___
	S ___ T ___ R ___	___

Register of Deeds Stamp & File Number

4. Lot No. \_\_\_\_\_, Recorded Plat \_\_\_\_\_  
 5. Private Claims \_\_\_\_\_

Section Corner 3, 4, 9 & 10; T.48 N., R.44 W.



I, Richard L. Drahn in a field survey on November 8, 1997, do hereby certify that under requirements of P.A. 74, Michigan P.A. of 1970, the corner points mentioned in lines 1 and 2 above were in conformance with regulations and rules therefore as required in the current manual of survey instructions of the United States Department of the Interior, Bureau of Land Management or by a decree of a Court of Law and/or that the corner points mentioned in lines 3, 4 and 5 above were in conformance with the rules of the Michigan Board of Land Surveyors or by a Decree of a Court of Law; established, re-established, monumented, re-monumented, recovered, found as expressed below:

**NOTE: Not more than 4 corners, all in the same town and range, may be recorded on this certificate.**

**A. Description of original monument and accessories and/or subsequent restoration:**

Corner established by Austin Burt on September 8, 1848. Original B.T.s --- Y. Birch 14" N.44 E. 32 links (21.12') --- Hemlock 12" S.35 W. 12 links.---

Corner restored on 8/14/68 by Donald D. Lappala (12585). from the remains of the two original B.T.s. He set a 2' X 5' iron pipe with a 3" brass cap stamped to indicate the corner and the following new B.T.s: --- 5" (9") Yellow Birch S.89 W. (S.89 W.) 43.0' (42.94') --- 5" (6") Sugar Maple S.04 E. (S.02 E.) 35.3' (35.13') --- 8" (13") Yellow Birch S.64 W. (S.66 W.) 17.4' (17.18') ---

**B. Description of corner evidence found and/or method applied in restoring or reestablishing corner:**

Corner recorded in Gogebic County in USFS Liber, Page E-13 on 3/31/69.

Research form on file with Gogebic County records.

Recovered the corner as described and the bearing objects as indicated in parentheses above. The original Yellow Birch B.T. is now a live, 26" Yellow Birch with GLO blazes. The original Hemlock B.T. is now a 20-24" badly decayed Hemlock stump.

**C. Description of monument for corner and accessories established to perpetuate locating the position of the corner:**

From the above described monument I referenced the following:

- 4" X 4" Cedar sign post N.81 E. 1.75'
- 6' Steel sign rail N.52 W. 2.49'

PEER GROUP APPROVED  
*Richard L. Drahn 11/11/97*  
 COUNTY \_\_\_\_\_



Signed by Richard L. Drahn Date November 9, 1997

Surveyor's Michigan License No. 21564