

SCANDINAVIAN

MAY 1 8 1997

COMMISSION

LAND CORNER RECORDATION CERTIFICATE
Filing Requirement of Act 74, Mich. P.A. 1970

Register's Office
Gogebic County

Received for record the
17th day of OCTOBER
A. D. 1996 at 9:50 o'clock
A. m., and recorded in
Liber 6 of CORNERS
on page 76
Ramona Collins Deputy
Register of Deeds

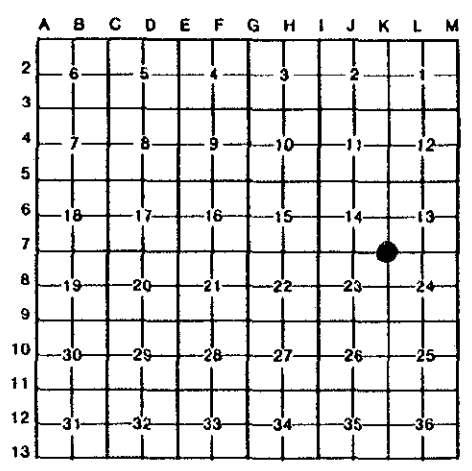
For corners in

Table with columns: Gogebic (County), Located In, Corner Code #. Includes rows for Public Land Survey, Property Controlling in Section, and Miscellaneous Property in Sec.

- 4. Lot No. , Recorded Plat
5. Private Claims

Sec. Cor. 13, 14, 23 & 24; T.48 N., R.44 W.

Richard L. Drahn in a field survey on October 14, 1996, do hereby certify that under requirements of P.A. 74, Michigan P.A. of 1970, the corner points mentioned in lines 1 and 2 above were in conformance with regulations and rules therefore as required in the current manual of survey instructions of the United States Department of the Interior, Bureau of Land Management or by a decree of a Court of Law and/or that the corner points mentioned in lines 3, 4 and 5 above were in conformance with the rules of the Michigan Board of Land Surveyors or by a Decree of a Court of Law; established, re-established, monumented, re-monumented, recovered, found as expressed below:



NOTE: Not more than 4 corners, all in the same town and range, may be recorded on this certificate.

A. Description of original monument and accessories and/or subsequent restoration:

Corner established by Austin Burt on Sept. 2, 1848. Original B.T.s --- Fir 10" N.63 E. 25 links (16.50') --- Spruce 14" N.23 W. 31 links (20.46') Corner re-established by Richard L. Drahn, RLS 21564 on 7/27/89 using proportionate methods. He set a 3/4" solid aluminum rod with a 3 1/2" stamped alum. cap and the following new B.T.s: --- 10" (11") Cedar N.09 W. (N.07 W.) 26.15' (26.13') --- 6" (7") Black Ash N.47 E. (N.55 E.) 13.79' (13.81') --- 12" (12") Cedar S.40 W. (S.50 W.) 2.09' (2.05') --- 6' Steel rail S.34 E. (S.34 E.) 2.2' (2.15') --- Corner recorded in Gogebic County in Liber 3, Page 313 on 1/23/90.

B. Description of corner evidence found and/or method applied in restoring or reestablishing corner:

Act 74 research form on file with Gogebic County records.

Recovered the monument as described and the bearing trees as noted in parentheses above. No evidence remains of the original bearing trees.

C. Description of monument for corner and accessories established to perpetuate locating the position of the corner:

Bearing tree referenced:

6" Black Ash N.63 W. 5.69'

PEER GROUP APPROVED
Richard L. Drahn 10/16/96
COUNTY REPRESENTATIVE



Signed by Richard L. Drahn

Date October 15, 1996

Surveyor's Michigan License No. 21564