

DEC 15 1998

SECTION

LAND CORNER RECORDATION CERTIFICATE
Filing Requirement of Act 74, Mich. P.A. 1970

Register's Office }
Gogebic County } ss.

For corners in

<u>Gogebic</u> (County)	Located In:	Corner Code #
1. Public Land Survey	T <u>48</u> N R <u>45</u> W	<u>E-5</u>
	T _____ R _____	_____
	T _____ R _____	_____
	T _____ R _____	_____
2. Property Controlling in Section	S _____ T _____ R _____	_____
	S _____ T _____ R _____	_____
3. Miscellaneous Property in Sec.	S _____ T _____ R _____	_____
	S _____ T _____ R _____	_____

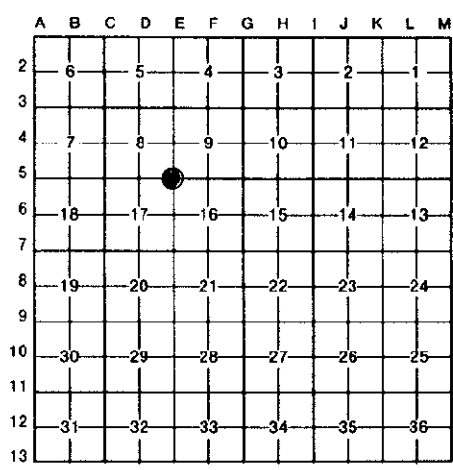
Received for record the
17th day of SEPTEMBER
A. D. 1998 at 1:15 o'clock
P m., and recorded in
Liber 7 of CORNERS
on page 56
Ramona Collins Deputy
Register of Deeds

Register of Deeds Stamp & File Number

- 4. Lot No. _____, Recorded Plat _____
- 5. Private Claims _____

Section Corner 8, 9, 16 & 17; T.48 N., R.45 W.

I, Richard L. Drahn in a field survey on August 25, 19 98, do hereby certify that under requirements of P.A. 74, Michigan P.A. of 1970, the corner points mentioned in lines 1 and 2 above were in conformance with regulations and rules therefore as required in the current manual of survey instructions of the United States Department of the Interior, Bureau of Land Management or by a decree of a Court of Law and/or that the corner points mentioned in lines 3, 4 and 5 above were in conformance with the rules of the Michigan Board of Land Surveyors or by a Decree of a Court of Law; established, re-established, monumented, re-monumented, recovered, found as expressed below:



NOTE: Not more than 4 corners, all in the same town and range, may be recorded on this certificate.

A. Description of original monument and accessories and/or subsequent restoration:

Corner established by Austin Burt on 9/26/1848. Original B.T.s --- 12" Y. Birch S.52 E. 17 links (11.22') --- 14" Lynn N.81 W. 31 links (20.46')

Limpert and Kellan, on 4/17/35 recovered a 20" scribed Yellow Birch at this location and placed a location poster on a 5" Maple 10 feet NE of the corner.

B. Description of corner evidence found and/or method applied in restoring or reestablishing corner:

Corner position found marked by a 1" X 4½' iron pipe at record bearing and distance from the remains of the two original B.T.s. The first is a very badly decayed 20 - 30" Yellow Birch stump. The second one is now a large series of root holes, species is undetermined.

I was unable to locate the location poster set by Limpert and Kellan in 1935. A very old blazed line, with blue paint runs south from this corner.

Corner research on file with Gogebic County records.

PEER GROUP APPROVED
Richard L. Drahn 9/16/98
COUNTY REGISTER

C. Description of monument for corner and accessories established to perpetuate locating the position of the corner:

At the corner position I set a 2" X 30" aluminum pipe with a 3¼" stamped aluminum cap and the following new B.T.s:

8"	Sugar Maple	N.83 W.	13.94'
7"	Sugar Maple	N.32 E.	18.09'
8"	Yellow Birch	S.16 W.	30.91'
6'	Steel sign rail	S.81 E.	2.94'



Signed by Richard L. Drahn Date August 29, 1998

Surveyor's Michigan License No. 21564

USFS 9-9