

SURVEY & MONUMENTATION

JAN 05 2001

SECTION

LAND CORNER RECORDATION CERTIFICATE
Filing Requirement of Act 74, Mich. P.A. 1970

Register's Office }
 Gogebic County } ss.

For corners in _____
 (County)

Located in: _____ Corner Code # _____

1. Public Land Survey T48NR45W F-11
 T R
 T R
 T R

2. Property Controlling S T R
 in Section S T R

3. Miscellaneous S T R
 Property in Sec. S T R

4. Lot No. _____, Recorded Plat _____

5. Private Claims _____

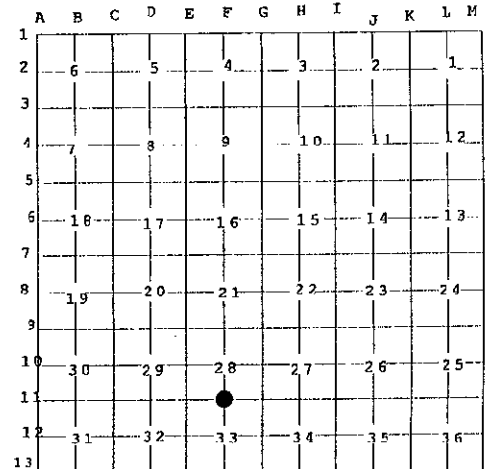
Quarter Corner common to Sections 28 & 33.

Received for record the
22nd day of JUNE
 A. D. 2000 at 1:25 o'clock
P m., and recorded in
 Liber 8 of CORNERS
 in 1989 by
Cheryl Rupp
 Register of Deeds

Register of Deeds Stamp & File Number

I, John R. Garske, in a field survey on March 22, 2000, do hereby state that under requirements of P.A. 74, Michigan P.A. of 1970, the corner points mentioned in lines 1 and 2 above were in conformance with regulations and rules therefore as required in the current manual of survey instructions of the United States Department of the Interior, Bureau of Land Management or by a decree of a Court of Law and / or that the corner points mentioned in lines 3, 4, and 5 above were in conformance with the rules of the Michigan Board of Land Surveyors or by a Decree of a Court of Law; established, re-established, monumented, recovered, found as expressed below.

NOTE: Not more than 2 corners, all in the same town and range, may be recorded on this certificate.



A. Description of original monument and accessories and / or subsequent restoration:

Original survey by Austin Burt in 1848.
 Original Corner: Maple post
 Original Bearing Trees: 6" Maple S 10° W 20 Links
 6" Maple N 10° E 13 Links

B. Description of corner evidence found and / or method applied in restoring or re-establishing corner:

I set a math point at a single proportion position from which to search. At the search location I found a large ~~Sugar~~ ^{RED} Maple with a Keweenaw tag. The tree fits with the original bearing tree at S 10° W, at a distance of 20 links. Scribing is still visible on the face of the tree. The point established from the original bearing tree is N 12°-43'-43"E, at a distance of 3.13 feet from the math point.

FIELD GROUP ACKNOWLEDGMENT
Richard P. Weahn 6/21/00
CONCRETE RE-ESTABLISHED

C. Description of monument for corner and accessories established to perpetuate locating the position of the corner:

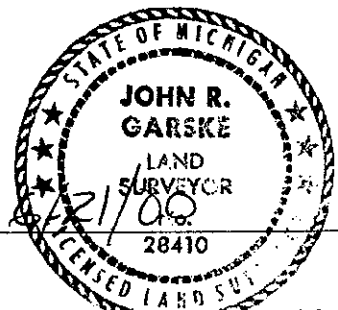
I set a 30" Bernstein aluminum monument at a location set from the above described original bearing tree at G.L.O. record bearing and distance, from which I established the following witnesses:

14" Sugar Maple	S 54° W	36.27 Feet
6" Sugar Maple	N 21° E	28.65 Feet
5" Sugar Maple	S 78° E	8.76 Feet
6' Steel Sign Post	Due South	1.65 Feet

Signed by John R. Garske

Date 6/21/00

Surveyor's Michigan License No. 28410
 FB # 250, page 9



SURVEY &
MONUMENTATION

JAN 05 2001

SECTION

