

MAR 02 2000

LAND CORNER RECORDATION CERTIFICATE  
Filing Requirement of Act 74, Mich. P.A. 1970

For corners in SECTION

<u>Gogebic</u> (County)	Located In:	Corner Code #
1. Public Land Survey	T <u>48N</u> R <u>45W.</u>	<u>1-5</u>
	T _____ R _____	_____
	T _____ R _____	_____
	T _____ R _____	_____
2. Property Controlling in Section	S _____ T _____ R _____	_____
	S _____ T _____ R _____	_____
3. Miscellaneous Property in Sec.	S _____ T _____ R _____	_____
	S _____ T _____ R _____	_____

Register's Office }  
Gogebic County } ss.

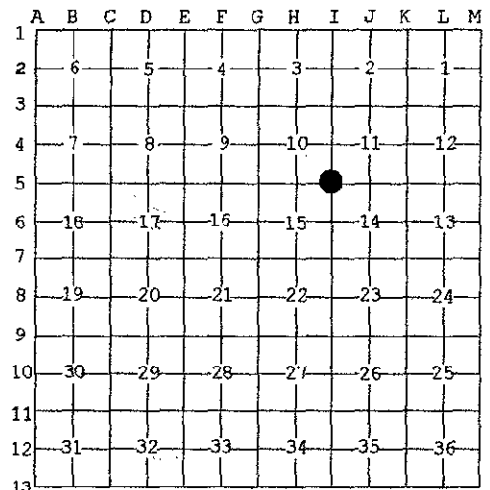
Received for record the  
22<sup>ND</sup> day of SEPTEMBER  
A. D. 1999 at 1:00 o'clock  
P m., and recorded in  
Liber 7 of CORNERS  
on page 247  
Ramona Collins, Deputy  
Register of Deeds

Register of Deeds Stamp & File Number

4. Lot No. \_\_\_\_\_, Recorded Plat \_\_\_\_\_  
5. Private Claims \_\_\_\_\_

Section Corner 10, 11, 14 & 15; T.48 N., R.45 W.

I, Richard L. Drahn, in a field survey on September 21, 1999 do hereby state that under requirements of P.A. 74, Michigan P.A. of 1970, the corner points mentioned in lines 1 and 2 above were in conformance with regulations and rules therefore as required in the current manual of survey instructions of the United States Department of the Interior, Bureau of Land Management or by a decree of a Court of Law and /or that the corner points mentioned in lines 3, 4 and 5 above were in conformance with the rules of the Michigan Board of Land Surveyors or by a Decree of a Court of Law; established, re-established, monumented, recovered, found as expressed below:



NOTE: Not more than 2 corners, all in the same town and range, may be recorded on this certificate.

A. Description of original monument and accessories and/or subsequent restoration:

Original corner established by Austin Burt on 9/21/1848. Original bearing trees:

Cedar	7"	S.55° W.	23 links	(15.18')
Cedar	16"	N.49° E.	45 links	(29.70')

George Kongstead on 10/7/35 recovered the SW B.T. as a scribed 16" Cedar stub 20 ft. West of a 10" Cedar snag squared for the corner. He placed a location poster on the east side of a 7" dead Y. Birch 12 ft. West of the approx. Corner.

B. Description of corner evidence found and/or method applied in restoring or reestablishing corner:

I restored the corner position at record bearing and distance from the remains of the two original bearing trees. The first one is a downed 16" Cedar with portions of the original blaze still present. The second one is now a large shallow windthrown depression. The 1935 corner tree is now a heavily leaning 10" Cedar, squared for the corner with names and dates to 1940 bearing N.64° E. 3.5' From the original corner location. Unable to locate Kongsteads location poster that was placed on a dead 7" Y. Birch although there are several dead and downed Yellow Birch sprouts at the proper location.

A 4" X 5' Cedar post bears N.11° W. 7.4' from the original corner location.

Corner research on file with Gogebic County records.

C. Description of monument for corner and accessories established to perpetuate locating the position of the corner:

At the corner position I set a 3/4" X 4' aluminum rod monument with a 3 1/4" stamped aluminum cap and the following new B.T.s (all measurements taken to a nail in side of tree)

Black Ash	6"	N.71° W.	24.69'
Red Maple	6"	N.63° E.	17.03'
Cedar	6"	S.33° E.	16.30'
Steel sign rail	6'	S.38° W.	2.10'

DEED GROUP APPROVED

Richard L. Drahn 9/21/99  
COUNTY REGISTRAR



Signed by Richard L. Drahn Date September 21, 1999

Surveyor's Michigan License No. 21564