

Register's Office }
Gogebic County } ss.

LAND CORNER RECORDATION CERTIFICATE
Filing Requirement of Act 74, Mich. P.A. 1970

Received for record the
2ND day of October
A. D. 2000 at 10:50 o'clock
A m., and recorded in
Liber 8 of CORNER
on page 34
Ramona Collins Deputy
Register of Deeds

For corners in

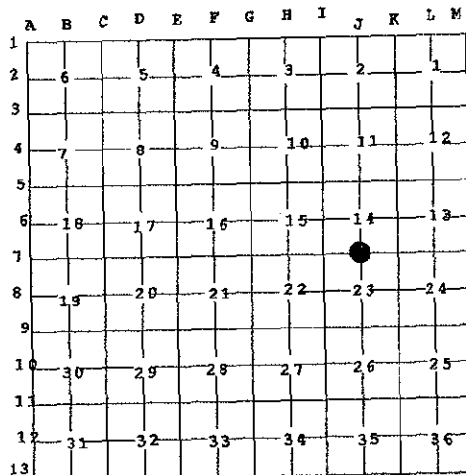
<u>Gogebic</u> (County)	Located in:	Corner Code #
1. Public Land Survey	T48 N R45 W.	J-7
	T ___ R ___	SURVEY &
	T ___ R ___	MONUMENTATION
2. Property Controlling in Section	S ___ T ___ R ___	<u>JAN 05 2001</u>
3. Miscellaneous Property in Sec.	S ___ T ___ R ___	SECTION

Register of Deeds Stamp & File Number

4. Lot No. _____, Recorded Plat _____
5. Private Claims _____

¼ Corner 14 & 23; T.48 N., R.45 W.

I, Richard L. Drahn, in a field survey on August 24, 2000 do hereby state that under requirements of P.A. 74, Michigan P.A. of 1970, the corner points mentioned in lines 1 and 2 above were in conformance with regulations and rules therefore as required in the current manual of survey instructions of the United States Department of the Interior, Bureau of Land Management or by a decree of a Court of Law and /or that the corner points mentioned in lines 3, 4 and 5 above were in conformance with the rules of the Michigan Board of Land Surveyors or by a Decree of a Court of Law; established, re-established, monumented, recovered, found as expressed below:



NOTE: Not more than 2 corners, all in the same town and range, may be recorded on this certificate.

A. Description of original monument and accessories and/or subsequent restoration:

Original corner established by Austin Burt on 9/20/¹⁸⁴⁶1857. Original bearing trees:

Sugar	14"	S.70° W.	24 links	(15.84')
Sugar	12"	N.30° E.	6 links	(3.96')

B. Description of corner evidence found and/or method applied in restoring or reestablishing corner:

I restored the corner position at record bearing and distance from the remains of the two original bearing trees. The first one is a very Badly decayed Sugar Maple windfall. The second one is now a large series of root holes; (species undetermined).

A 15" Sugar Maple blazed for the corner bears S.81° W., 30.5'.

Corner research on file with Gogebic County records.

C. Description of monument for corner and accessories established to perpetuate locating the position of the corner:

At the corner position I set a 30" long aluminum pipe with a 3 ¼" stamped aluminum cap and the following new blazed and scribed bearing trees: (distances taken to a 10p nail in the side of the B.T.)

Sugar Maple	9"	N.60° E.	19.92'
Sugar Maple	11"	S.38° W.	37.82'
Red Maple	8"	N.30° W.	31.46'
Steel sign rail	6'	N.83°W.	1.81'



Richard P. Drahn 9/27/00
REGISTERED LAND SURVEYOR

Signed by Richard P. Drahn Date September 23, 2000
Surveyor's Michigan License No. 21564

FORM APPROVED BY MICHIGAN STATE BOARD OF PROFESSIONAL SURVEYORS, JAN. 28, 1971

REVISED MAY 14, 1975

REVISED JAN., 1983
REVISED OCT., 1996