

MAR 02 2000

SECTION

LAND CORNER RECORDATION CERTIFICATE
Filing Requirement of Act 74, Mich. P.A. 1970

Register of Deeds }
Gogebic County } ss.

Received for record the
26TH day of AUGUST
A. D. 1999 at 1:45 o'clock
P m., and recorded in
Liber 7 of CORNERS
on page 237
Ramona Collins, Deputy
Register of Deeds

For corners in

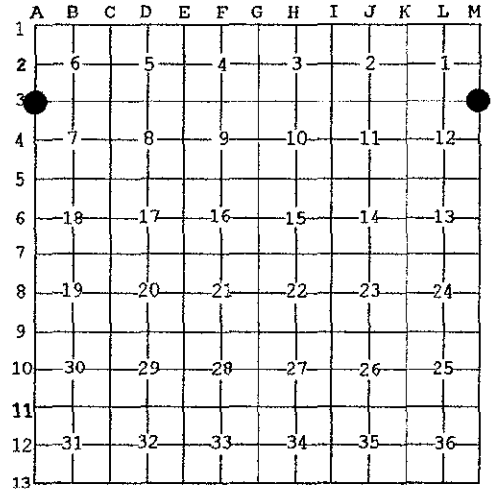
<u>Gogebic</u> (County)	Located In:	Corner Code #
1. Public Land Survey	<u>T 48N R 45W.</u>	<u>M-3</u>
	<u>F</u> <u>R</u>	
	<u>T</u> <u>R</u>	
	<u>T 48N R 44W</u>	<u>A-3</u>
2. Property Controlling in Section	S <u> </u> T <u> </u> R <u> </u>	
	S <u> </u> T <u> </u> R <u> </u>	
3. Miscellaneous Property in Sec.	S <u> </u> T <u> </u> R <u> </u>	
	S <u> </u> T <u> </u> R <u> </u>	

Register of Deeds Stamp & File Number

4. Lot No. _____, Recorded Plat _____
5. Private Claims _____

Section Corner 1, 12, 6 & 7; T.48 N., R.44-45 W.

I, Richard L. Drahn, in a field survey on August 21, 1999 do hereby state that under requirements of P.A. 74, Michigan P.A. of 1970, the corner points mentioned in lines 1 and 2 above were in conformance with regulations and rules therefore as required in the current manual of survey instructions of the United States Department of the Interior, Bureau of Land Management or by a decree of a Court of Law and/or that the corner points mentioned in lines 3, 4 and 5 above were in conformance with the rules of the Michigan Board of Land Surveyors or by a Decree of a Court of Law; established, re-established, monumented, recovered, found as expressed below:



NOTE: Not more than 2 corners, all in the same town and range, may be recorded on this certificate.

A. Description of original monument and accessories and/or subsequent restoration:

Original corner established by Austin Burt on 9/8/1847. Original bearing trees:

Spruce	18"	S.62° W.	23 links	(15.18')
B. Ash	18"	N.80° E.	55 links	(36.30')

B. Description of corner evidence found and/or method applied in restoring or reestablishing corner:

Correct corner position found marked by a 3/4" X 2' iron pipe set by Gogebic County Forestry Commission, at record bearing and distance from the two large windthrown stump holes of the original bearing trees.

The 0.16 chain distance east to "run, NNE", the 3.50 chain distance north to "enter swamp, NNW" and the 8.95 chain distance north to "stream, 6 links, NNW" are all in accordance with the field notes of the original Government survey.

Corner research on file with Gogebic County records.

C. Description of monument for corner and accessories established to perpetuate locating the position of the corner:

At the corner position I set a 3/4" X 4' aluminum rod monument with a 3 1/4" stamped aluminum cap and the following new B.T.s (all measurements taken to a nail in side of tree):

Black Ash	10"	N.44° E.	28.01'
Black Ash	8"	S.68° E.	22.35'
Sugar Maple	7"	S.45° W.	34.32'
Steel sign rail	6'	S.26° W.	2.07'



Richard L. Drahn 8/24/99
COURT RECORDED

Signed by Richard L. Drahn Date August 23, 1999
Surveyor's Michigan License No. 21564