

MAR 02 2000

Register's office }
Gogebic County } ss.

LAND CORNER RECORDATION CERTIFICATE
Filing Requirement of Act 74, Mich. P.A. 1970

SECTION

Received for record the
26TH day of AUGUST
A. D. 1999 at 1:45 o'clock
P m., and recorded in
Liber 7 of CORNER
on page 241.
Ramona Collins DePate
Register of Deeds

For corners in

<u>Gogebic</u> (County)	Located in:	Corner Code #
1. Public Land Survey	T <u>48</u> ^N R <u>46</u> ^W	<u>G-5</u>
	T ___ R ___	___
	T ___ R ___	___
	T ___ R ___	___
2. Property Controlling in Section	S ___ T ___ R ___	___
	S ___ T ___ R ___	___
3. Miscellaneous Property in Sec.	S ___ T ___ R ___	___
	S ___ T ___ R ___	___

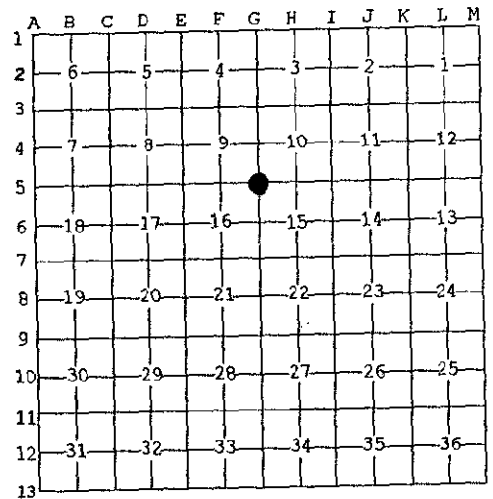
Register of Deeds Stamp & File Number

4. Lot No. _____, Recorded Plat _____
5. Private Claims _____

Section Corner 9, 10, 15, 16, T48N, R46W

I, John P. Goss, in a field survey on July 20, 1999 do hereby state that under requirements of P.A. 74, Michigan P.A. of 1970, the corner points mentioned in lines 1 and 2 above were in conformance with regulations and rules therefore as required in the current manual of survey instructions of the United States Department of the Interior, Bureau of Land Management or by a decree of a Court of Law and/or that the corner points mentioned in lines 3, 4 and 5 above were in conformance with the rules of the Michigan Board of Land Surveyors or by a Decree of a Court of Law; established, re-established, monumented, recovered, found as expressed below:

NOTE: Not more than 2 corners, all in the same town and range, may be recorded on this certificate.



A. Description of original monument and accessories and/or subsequent restoration:

Corner established by Austin Burt on June 2, 1851.
Original bearing trees: Cedar 20" S 50° W 35 links (23.10 ft.)
Spruce 16" N 20° E 40 links (26.40 ft.)
Richard L. Drahn, 21564, on February 23, 1979, restored corner position from the remains of the original bearing trees. He set a 2" by 5" iron pipe with a 3" brass cap, stamped to indicated the corner position. He established the following reference objects: 7" Cedar - N 72° W - 27.1 feet; 7" Cedar - N 37° E 31.5 feet; 9" Cedar - S 82° E - 8.4 feet; 7' metal sign post - S 28° E - 1.4 ft. He recorded said corner in Liber 2, page 95 of Land Corners.

B. Description of corner evidence found and/or method applied in restoring or reestablishing corner.
Found Richard L. Drahn, monument and accessories.

No original evidence found.

Act 74 research on file.

BEER GROUP APPROVAL
Richard L. Drahn 8/24/99
COUNTY REGISTER

C. Description of monument for corner and accessories established to perpetuate locating the position of the corner:

From the found monument I established the following new and existing reference objects:

- 9" Cedar N 72° W 27.13 ft.
 - 10" Cedar N 37° E 31.36 ft. new nail
 - 12" Cedar S 82° E 8.43 ft.
 - 10" Cedar S 49° W 24.47 ft.
 - 7' Metal sign post S 28° E 1.17 ft. to face
- (All measurement to nail in side of tree)



Signed by John P. Goss
Surveyor's Michigan License No. 23509

Date July 21, 1999

USFS J-13