

LAND CORNER RECORDATION CERTIFICATE
Filing Requirement of Act 74, Mich. P.A. 1970

Register's Office }
 Gogebic County } **SG.**

For corners in Gogebic Located in: _____ Corner Code # _____
 (County)

1. Public Land Survey T48NR48-47W M-2
T48NR 47W A-2
 T R _____
 T R _____
 2. Property Controlling S T R _____
 in Section S T R _____
 3. Miscellaneous S T R _____
 Property in Sec. S T R _____

**SURVEY &
 MONUMENTATION**

JAN 05 2001

4. Lot No. _____, Recorded Plat _____
 5. Private Claims _____
 Quarter Corner common to Sections 1 & 6. **SECTION**

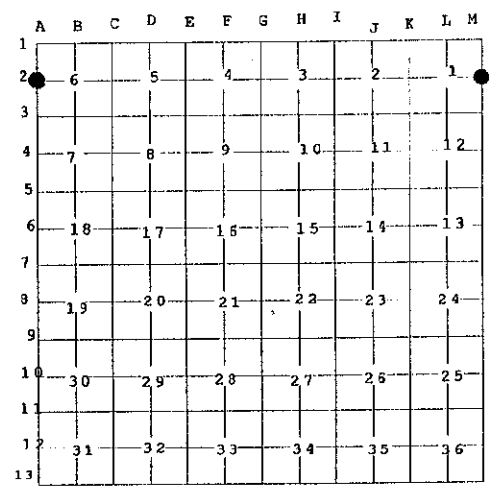
Received for record the
2ND day of JUNE
 A. D. 2000 at 10:20 o'clock
A m., and recorded in
 Liber 7 of CORNERS

Page 366
C Cheryl Ruppel, Dep.
 Register of Deeds

Register of Deeds Stamp & File
 Number

I, John R. Garske, in a field survey on April 24, 2000, do hereby state that under requirements of P.A. 74, Michigan P.A. of 1970, the corner points mentioned in lines 1 and 2 above were in conformance with regulations and rules therefore as required in the current manual of survey instructions of the United States Department of the Interior, Bureau of Land Management or by a decree of a Court of Law and / or that the corner points mentioned in lines 3, 4, and 5 above were in conformance with the rules of the Michigan Board of Land Surveyors or by a Decree of a Court of Law; established, re-established, monumented, recovered, found as expressed below.

NOTE: Not more than 2 corners, all in the same town and range, may be recorded on this certificate.



A. Description of original monument and accessories and / or subsequent restoration:

Original survey by William Ives in 1848.*****
 Original Corner: Cedar post
 Original Bearing Trees: 14" Cedar S 30° E 4 Links
 16" Cedar S 12° W 9 Links

B. Description of corner evidence found and / or method applied in restoring or re-establishing corner:

I found a 1/2" iron rod bent over on the Westerly side of the road at the corner position. This location checks with a single proportion position between the section corners north and south.

Record research on file.

(See sketch on back)

DEED GROUP APPROVED
Richard P. Deahn 5/24/00
COUNTY REGISTER OF DEEDS

C. Description of monument for corner and accessories established to perpetuate locating the position of the corner:

I accepted the 1/2" iron rod as monumenting the East quarter corner position of Section 1, T 48 N, R 48 W, and replaced it with a 3-1/4" brass capped 5/8" x 30" rebar set below road grade. I also established the following witnesses:
 16" Spruce S 20° E 162.23 Feet
 8" Balsam S 87° W 32.92 Feet
 7" Black Ash N 63° W 46.03 Feet
 Reference Monument East 30.00 Feet (Standard aluminum Bersten pipe monument)
 (Steel sign post set 1.5' East of reference monument)

Signed by John R. Garske

Date 5/24/00

 JOHN R. GARSKE
 No. 28410
 SURVEYOR
 MICHIGAN

Surveyor's Michigan License No. 28410
 FB # 239, page 1/5

Quarter Corner common to Sections 1 & 6,
T 48 N, R 47-48 W.



Scale: 1" = 200'

36
1
31
6

Monumented
CORNER

2590.50 R
39.25 chs
2591.96 M

S 00°02'29"E

SURVEY &
REMONUMENTATION

JAN 05 2001

SECTION

1/4 COR.

FOUND
1/2" IRON
ROD

M-2

1
6

RANGE LINE

A-2

40 chs
2639.71'

S 00°02'01"E

1
12
6
7

COR. FROM LIVE Rd.