

LAND CORNER RECORDATION CERTIFICATE
Filing Requirement of Act 74, Mich. P.A. 1970

Register's Office }
 Gogebic County } ss.

For corners in

Gogebic Located In: Corner Code #
 (County)

1. Public Land Survey T48N R 47W B - 3
 T R
 T R
 T R

2. Property Controlling S T R
 in Section S T R
 3. Miscellaneous S T R
 Property in Sec. S T R

SURVEY & MONUMENTATION

JAN 05 2001

Received for record the
2ND day of JUNE
 A. D. 1900 at 10:20 o'clock
A m., and recorded in
 Liber 7 of CORNERS
 on page 368
Cheryl Rippe, Reg.
 Register of Deeds

Register of Deeds Stamp & File Number

4. Lot No. _____, Recorded Plat _____ SECTION _____
 5. Private Claims _____
 Quarter Corner common to Sections 6 & 7, T 48 N, R 47 W

I, John R. Garske, in a field survey on December 15, 19 99 do hereby state that under requirements of P.A. 74, Michigan P.A. of 1970, the corner points mentioned in lines 1 and 2 above were in conformance with regulations and rules therefore as required in the current manual of survey instructions of the United States Department of the Interior, Bureau of Land Management or by a decree of a Court of Law and for that the corner points mentioned in lines 3, 4 and 5 above were in conformance with the rules of the Michigan Board of Land Surveyors or by a Decree of a Court of Law; established, re-established, monumented, recovered, found as expressed below:

NOTE: Not more than 2 corners, all in the same town and range, may be recorded on this certificate.

	A	B	C	D	E	F	G	H	I	J	K	L	M
1													
2		6		5		4		3		2		1	
3		●											
4		7		8		9		10		11		12	
5													
6		18		17		16		15		14		13	
7													
8		19		20		21		22		23		24	
9													
10		30		29		28		27		26		25	
11													
12		31		32		33		34		35		36	
13													

A. Description of original monument and accessories and/or subsequent restoration:

Original Survey: William Ives, P.S., in 1848
 Original Corner: Wood Post
 Original Bearing Trees: 10" Sugar S 20° W 22 Links
 8" Hemlock N 48° E 24 Links

B. Description of corner evidence found and/or method applied in restoring or reestablishing corner:

Set point opposite of rock ancient fence line and wall to the South and Blueline to the North and in the centerline of Lake Road. Distances East 2650.89 and west 2343.25 check with this corner position. (5004.12'-75.82 chs GLO) (4994.14m)

Record research on file.

(See sketch on back)

PEER GROUP APPROVED
Richard P. Deal 5/24/00
 COUNTY SURVEYOR

C. Description of monument for corner and accessories established to perpetuate locating the position of the corner:

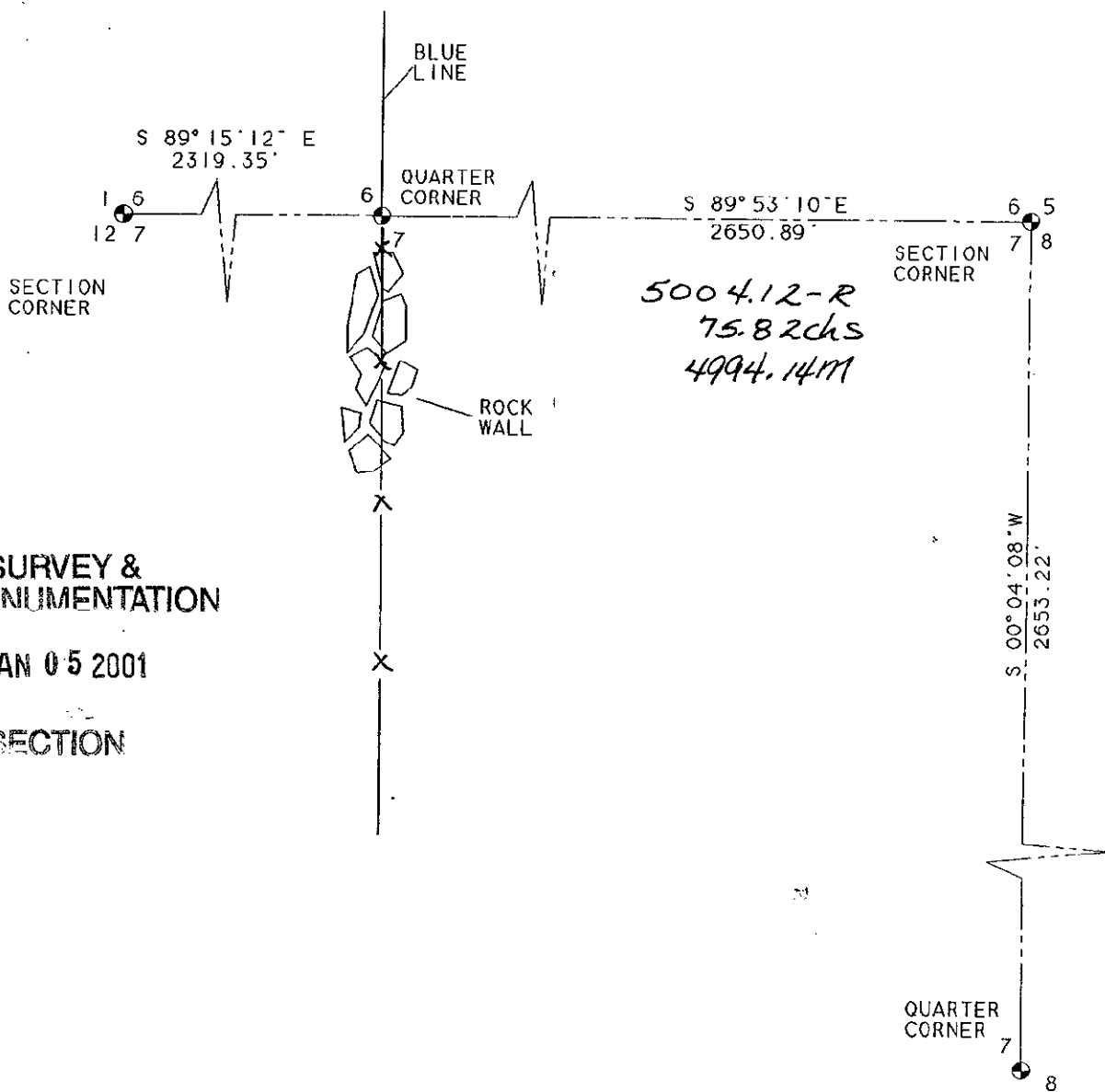
I set a 5/8" iron rod with a stamped brass cap in the centerline of Lake Road with a standard 2 1/2" x 42" aluminum Bernsten monument as a reference monument. Also, established the following witnesses:

Reference monument	S 39° W	43.00 Feet
10" Ironwood	N 27° W	61.21 Feet
5" Yellow Birch	N 27° E	67.39 Feet
9" Maple	S 32° E	43.66 Feet

Signed by *John R. Garske*
 Surveyor's Michigan License No. 28410
 Field Book # 239, Page 100



T 48 N. R 47 W
SECTIONS 6.7. & 8



SURVEY &
REMONUMENTATION

JAN 05 2001

SECTION