

SURVEY & REMONUMENTATION

OCT 03 1996

COMMISSION LAND CORNER RECORDATION CERTIFICATE
 Filing Requirement of Act 74, Mich. P.A. 1970

For corners in Gogebic (County) Located in: _____ Corner Code # _____

1. Public Land Survey	T 48N R 47W	E-3
	T _____ R _____	_____
	T _____ R _____	_____
	T _____ R _____	_____
2. Property Controlling in Section	S _____ T _____ R _____	_____
	S _____ T _____ R _____	_____
3. Miscellaneous Property in Section	S _____ T _____ R _____	_____
	S _____ T _____ R _____	_____

Register's Office }
 Gogebic County } SE.

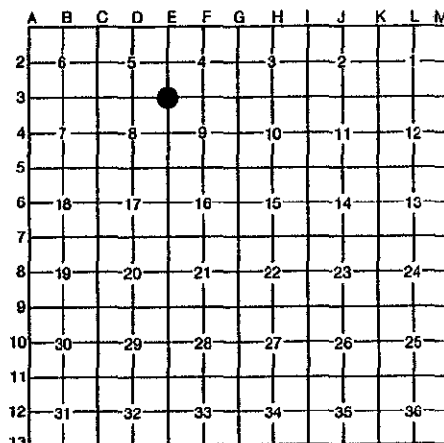
Received for record the 16th day of AUGUST A. D. 1996 at 11:15 o'clock A m., and recorded in Lib. 6 of CORNERS on page 22.
Ramona Collins, Deputy
 Register of Deeds

Register of Deeds Stamp & File Number

4. Lot No. _____, Recorded Plat _____
 5. Private Claims _____

Section Corner 4, 5, 8, & 9, T48N, R47W.

I, John R. Garske, in a field survey on April 11, 1996, do hereby certify that under requirements of P.A. 74, Michigan P.A. of 1970, the corner points mentioned in lines 1 and 2 above were in conformance with regulations and rules therefore as required in the current manual of survey instructions of the United States Department of the Interior, Bureau of Land Management or by a decree of a Court of Law and/or that the corner points mentioned in lines 3, 4 and 5 above were in conformance with the rules of the Michigan Board of Professional Surveyors or by a Decree of a Court of Law; established, re-established, monumented, re-monumented, recovered, found as expressed below:



NOTE: Not more than 4 corners, all in the same town and range, may be recorded on this certificate.

A. Description of original monument and accessories and/or subsequent restoration:

- Original Township Survey by William A. Burt, D.S., 1847.
- Original Township Subdivision By William Ives, D.S. Sept. 11-24, 1848.
- Original Bearing Trees: Fir 12"-S10°E-23 links, Sugar 12"-N30°W-43 links.

Corner recorded by John Garske, RLS 28410, 9/16/91, L4, pg 8. He set a P.K. nail in the centerline from which:
 10" Poplar - N21°E - 40.24 feet
 P. pole - S27°E - 38.35 feet
 10" Spruce - S52°W - 75.92 feet

B. Description of corner evidence found and/or method applied in restoring or reestablishing corner:

I found the P.K. nail set in 1990. Only one accessory remains, being the power pole. All others have been destroyed. I established new bearing trees and objects as noted below.

P.A. 74 Research on file.

PEER GROUP APPROVED
Richard P. Deal 8/14/96
COUNTY REPRESENTATIVE



C. Description of monument for corner and accessories established to perpetuate locating the position of the corner:

I set a 3 1/4" dia. aluminum cap stamped: County Remonumentation T48N-R47W, S.5, S.4, S.8, S.9, 1995, RLS 28410, to mark the corner position. I established new bearing trees and/or reference objects:
 P. pole #9-5/94 - S27°E - 38.35 feet
 10" Maple - N260°E - 67.53 feet
 16" Balsam - S340°W - 67.85 feet
 Reference monument consisting of 2 1/2" dia. aluminum pipe with a 3 1/4" dia. aluminum cap stamped: County Remonumentation, R.M. T48N-R47W S.5, S.4, S.8, S.9 1995, RLS 28410 S54°E, 53.52 feet with a 6' steel rail with sign 1.38' away.

Signed by John R. Garske Date 8-4-96
 Surveyor's Michigan License No. 28410