

SURVEY &
REMONUMENTATION

SEP 08 1998

SECTION

LAND CORNER RECORDATION CERTIFICATE
Filing Requirement of Act 74, Mich. P.A. 1970

Register's Office }
Gogebic County } ss.

For corners in

<u>Gogebic</u> (County)	Located In:	Corner Code #
1. Public Land Survey	Section 29 T <u>48N</u> R <u>47W</u>	<u>E-9</u>
	T _____ R _____	_____
	T _____ R _____	_____
	T _____ R _____	_____
2. Property Controlling in Section	S _____ T _____ R _____	_____
	S _____ T _____ R _____	_____
3. Miscellaneous Property in Sec.	S _____ T _____ R _____	_____
	S _____ T _____ R _____	_____

Received for record the
14th day of May
A. D. 1998 at 3:30 o'clock
P m., and recorded in
Book 6 of CORNERS
on page 395
Ramona Collins, Dep.
Register of Deeds

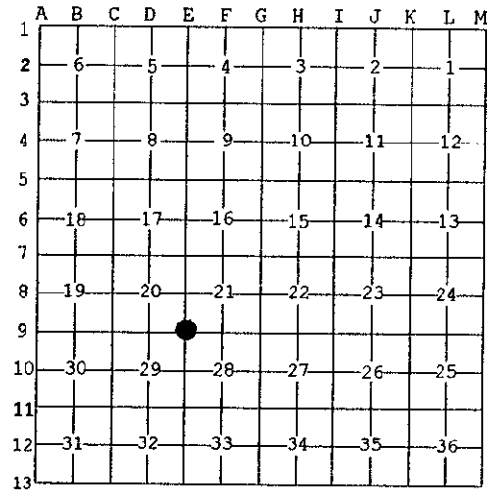
Register of Deeds Stamp & File Number

4. Lot No. _____, Recorded Plat _____
5. Private Claims _____

Section Corner 20, 21, 28, & 29

I, John R. Garske, in a field survey on April 6, 1998 do hereby state that under requirements of P.A. 74, Michigan P.A. of 1970, the corner points mentioned in lines 1 and 2 above were in conformance with regulations and rules therefore as required in the current manual of survey instructions of the United States Department of the Interior, Bureau of Land Management or by a decree of a Court of Law and /or that the corner points mentioned in lines 3, 4 and 5 above were in conformance with the rules of the Michigan Board of Land Surveyors or by a Decree of a Court of Law; established, re-established, monumented, recovered, found as expressed below:

NOTE: Not more than 2 corners, all in the same town and range, may be recorded on this certificate.



A. Description of original monument and accessories and/or subsequent restoration:

Original corner set by William Ives, D.S. in 1848.
Original bearing trees: Sugar 18"-S75°W-45 links
Y. Birch 22"- N88°E- 32 links

B. Description of corner evidence found and/or method applied in restoring or reestablishing corner:

At the corner location I was unable to find anything. I established the corner at the center line of Junet and Piihola Roads. An ancient barbwire fence and an old broken down board fence runs west from this position. I measured 1315± south along Junet Rd. to a "40" line fence and 2632.07" to the 1/4 corner.

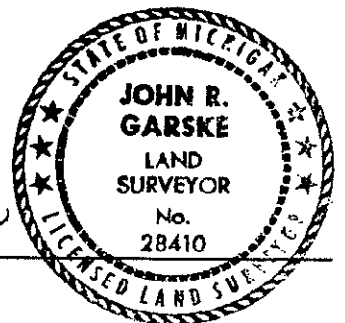
(Research on file)

PEER GROUP APPROVED
Richard P. Dredin 5/13/98
COUNTY REGISTER

C. Description of monument for corner and accessories established to perpetuate locating the position of the corner:

I set a 3 1/4" Brass cap on a 5/8" diam. x 10" long iron rod in the center of Junet and Piihola Roads from which I established:

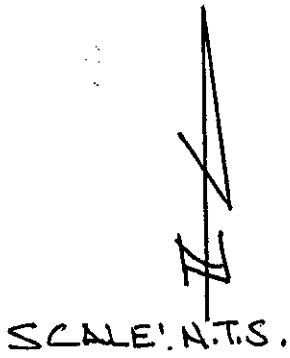
6" Maple	S86°W	35.76 feet
Power Pole	N47°E	47.46 feet
Reference Monument	S65°E	52.00 feet
Steel sign rail	S65°E	1.50 feet from R. M.
(R.M. is a 3 1/4" diam. aluminum cap on a 36" x 3/4" diam aluminum rod)		
8" Sugar	N53°E	43.55 feet



Signed by John R. Garske
Surveyor's Michigan license No. 28410

Date 5/12/98

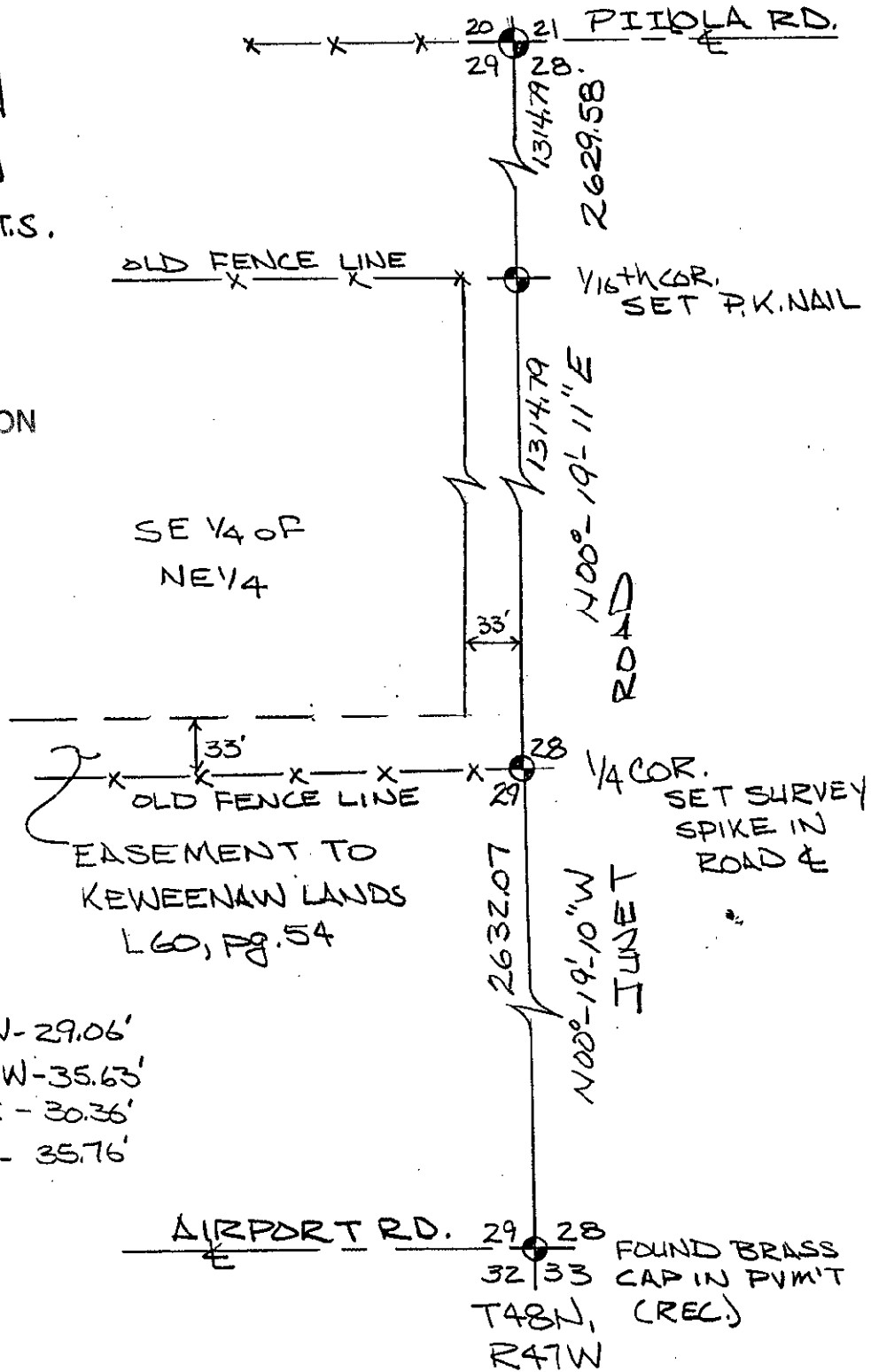
SKETCH



SURVEY &
REMONUMENTATION

SEP 08 1998

SECTION



1/4 COR TIES:

- 6" ASPEN - S82°W - 29.06'
- 8" S. MAPLE - N44°W - 35.63'
- REF. MON. - N82°E - 30.36'
- P. POLE - S62°E - 35.76'