

SURVEY & REMONUMENTATION

SEP 08 1998

SECTION

LAND CORNER RECORDATION CERTIFICATE
Filing Requirement of Act 74, Mich. P.A. 1970

Register's Office } ss.
Gogebic County }

For corners in

<u>Gogebic</u> (County)	Located In:	Corner Code #
1. Public Land Survey	Section 29T 48NR 47W	E-10
	T ___ R ___	___
	T ___ R ___	___
	T ___ R ___	___
2. Property Controlling in Section	S ___ T ___ R ___	___
	S ___ T ___ R ___	___
3. Miscellaneous Property in Sec.	S ___ T ___ R ___	___
	S ___ T ___ R ___	___

Received for record the
14TH day of MAY
A. D. 1998 at 3:30 o'clock
P m., and recorded in
Liber 6 of CORNERS
on page 396.
Ramona Collins Dep.
Register of Deeds

Register of Deeds Stamp & File Number

4. Lot No. _____, Recorded Plat _____
5. Private Claims _____

1/4 Corner, 29 & 28, T48N, R47W

I, John R. Garske, in a field survey on April 6, 1998 do hereby state that under requirements of P.A. 74, Michigan P.A. of 1970, the corner points mentioned in lines 1 and 2 above were in conformance with regulations and rules therefore as required in the current manual of survey instructions of the United States Department of the Interior, Bureau of Land Management or by a decree of a Court of Law and /or that the corner points mentioned in lines 3, 4 and 5 above were in conformance with the rules of the Michigan Board of Land Surveyors or by a Decree of a Court of Law; established, re-established, monumented, recovered, found as expressed below:

NOTE: Not more than 2 corners, all in the same town and range, may be recorded on this certificate.

A	B	C	D	E	F	G	H	I	J	K	L	M
1												
2	6	5	4	3	2	1						
3												
4	7	8	9	10	11	12						
5												
6	18	17	16	15	14	13						
7												
8	19	20	21	22	23	24						
9												
10	30	29	28	27	26	25						
11												
12	31	32	33	34	35	36						
13												

A. Description of original monument and accessories and/or subsequent restoration:

Original corner set by William Ives, D.S. in 1848.
Original bearing trees: Sugar 10"- S73°W- 7 links
Sugar 8"- N40°E- 26 links

B. Description of corner evidence found and/or method applied in restoring or reestablishing corner:

I established the corner position in the center of Junet Road, opposite an ancient post and barbwire fence running west. Distances north 1315'± to "40" line fences, and 2629.58 feet to section corner, and 1316'± south to "40" line fences, and 2632.07 feet to section corner were used to substantiate this position.

(Research on file)

(see sketch on back)

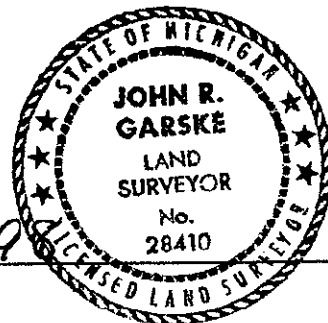
PEER GROUP APPROVED
Richard R. Wehn 5/13/98
COUNTY GOGEBIC

C. Description of monument for corner and accessories established to perpetuate locating the position of the corner:

I set a 3 1/4" Brass cap on a 5/8" diam. x 10" long iron rod in the center of Junet Road from which I established:

6" Aspen	S82°W	29.06 feet
8" Sugar Maple	N44°W	30.63 feet
Power Pole	S62°E	35.76 feet
Reference Monument	N82°E	30.36 feet
Steel sign rail	S65°E	1.50 feet from R. M.

(R.M. is a 3 1/4" diam. aluminum cap on a 2 1/2" x 30" diam aluminum rod)



Signed by John R. Garske
Surveyor's Michigan License No. 28410

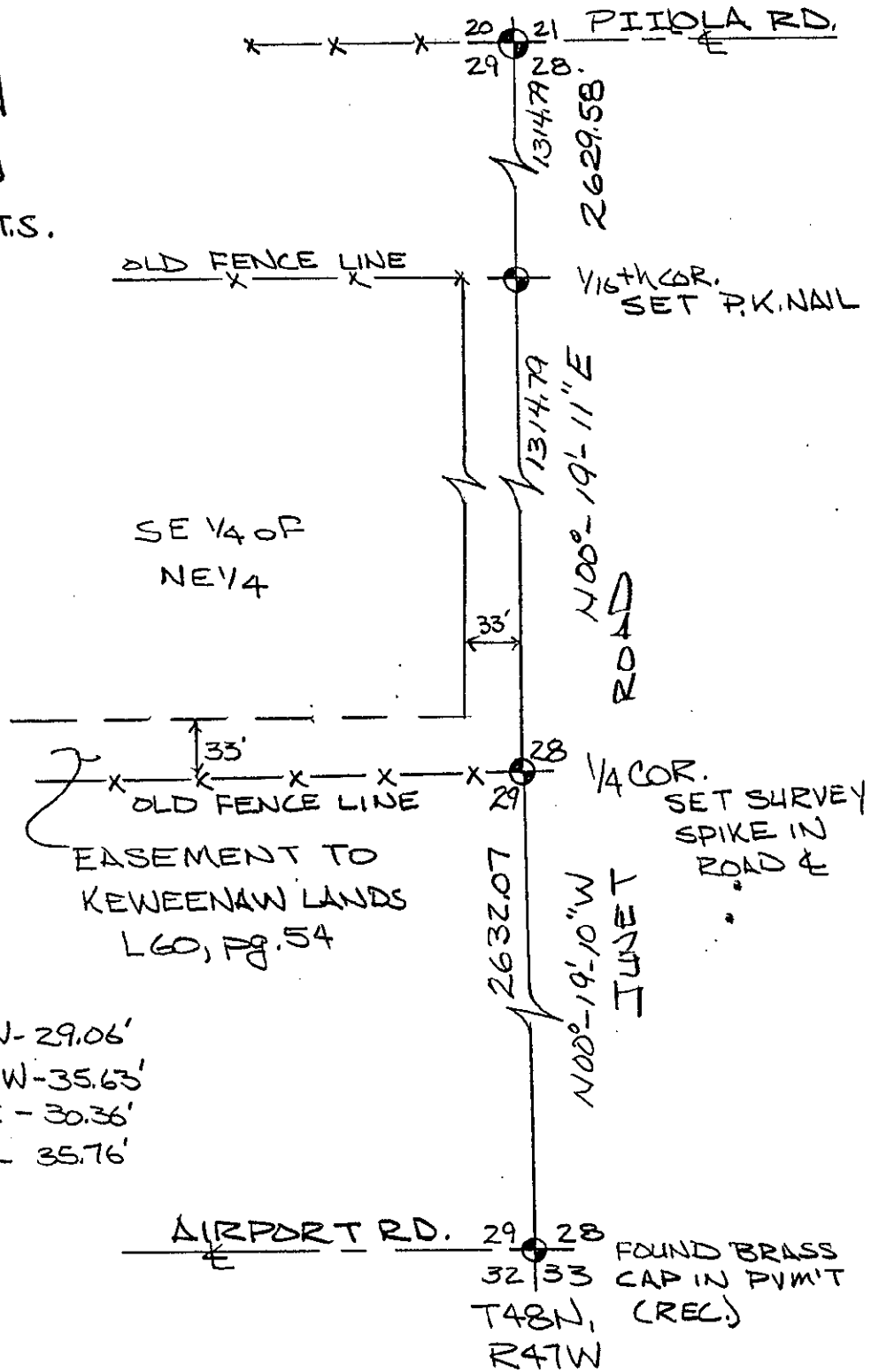
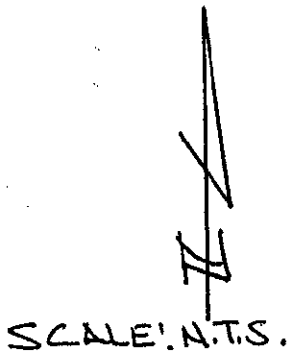
Date 5/12/98

SURVEY & REMONUMENTATION

SEP 08 1998

SECTION

SKETCH



1/4 COR TIES:

- 6" ASPEN - S82°W - 29.06'
- 8" S. MAPLE - N44°W - 35.63'
- REF. MON. - N82°E - 30.36'
- P. POLE - S62°E - 35.76'