

**SURVEY & REMONUMENTATION**

JAN 22 1998

**SECTION**

**LAND CORNER RECORDATION CERTIFICATE**  
Filing Requirement of Act 74, Mich. P.A. 1970

For corners in  
Gogebic

Located In:	Corner Code #
Section 26 48N 47W I-9	
1. Public Land Survey: T R	
T R	
T R	
T R	
2. Property Controlling in Section: S T R	
S T R	
3. Miscellaneous Property in Sec.: S T R	
S T R	

Register's Office } ss.  
Gogebic County }

Received for record the  
22<sup>ND</sup> day of DECEMBER  
A. D. 1997 at 11:00 o'clock  
3 A m., and recorded in  
Liber 6 of CORNERS  
on page 304  
Ramona Collins, Deputy  
Register of Deeds

Register of Deeds Stamp & File Number

4. Lot No. \_\_\_\_\_, Recorded Plat \_\_\_\_\_  
5. Private Claims \_\_\_\_\_

Section corner to 22, 23, 26 & 27, T48N, R47W

I, John R. Garske, in a field survey on December 11, 19 97 do hereby state that under requirements of P.A. 74, Michigan P.A. of 1970, the corner points mentioned in lines 1 and 2 above were in conformance with regulations and rules therefore as required in the current manual of survey instructions of the United States Department of the Interior, Bureau of Land Management or by a decree of a Court of Law and /or that the corner points mentioned in lines 3, 4 and 5 above were in conformance with the rules of the Michigan Board of Land Surveyors or by a Decree of a Court of Law, established, re-established, monumented, recovered, found as expressed below:

NOTE: Not more than 2 corners, all in the same town and range, may be recorded on this certificate.

	A	B	C	D	E	F	G	H	I	J	K	L	M
1													
2	6		5		4		3		2		1		
3													
4	7		8		9		10		11		12		
5													
6	18		17		16		15		14		13		
7													
8	19		20		21		22		23		24		
9													
10	30		29		28		27		26		25		
11													
12	31		32		33		34		35		36		
13													

A. Description of original monument and accessories and/or subsequent restoration:

Original corner set by William A. Burt, D.S. in 1847.  
He set a wood post from which:  
Fir 9" S16°W 28 links  
Hemlock 18" N60°E 23 links

B. Description of corner evidence found and/or method applied in restoring or reestablishing corner:

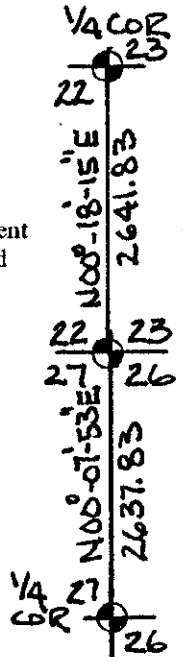
No evidence of the original survey exists. The corner position falls in the center of Lake Road, opposite an ancient fence line running east I set the corner in the center of the road. This location fits well with fence lines north and south and with monumented corners north and south. (see sketch)

(Research on file)

**PEER GROUP APPROVED**  
Richard R. Dealm 12/19/97  
COUNTY REGISTER

C. Description of monument for corner and accessories established to perpetuate locating the position of the corner:

I set a 5/8" x 10" iron rod with a 3 1/4" dia. brass cap stamped to identify the corner from which:  
A reference monument is West - 28.50 feet, Steel Sign Post - 1.91 feet west.  
(R.M. is a 21'2" x 30' alum. mon. with a 3 1/4" alum cap)  
11" S. Maple N39°W 58.66 feet  
7" S. Maple S77°E 55.19 feet  
USGS Concrete Monument N72°E 31.82 feet



Signed by John R. Garske  
Surveyor's Michigan License No. 28410

