

SURVEY
REMONUMENT

AUG 08 1997

GO

LAND CORNER RECORDATION CERTIFICATE
Filing Requirement of Act 74, Mich. P.A. 1970

Register's Office }
Gogebic County } ss.

Received for record the
11TH day of JUNE

A. D. 1997 at 10:35 o'clock

A m., and recorded in
Liber 6 of CORNERS

on page 134
Collen M. Ketchum, Deputy
Register of Deeds

Register of Deeds Stamp & File Number

For corners in

Gogebic

Located In:

Corner Code #

(County)

- 1. Public Land Survey Section 34 T 48 N R 47 W I-12
 T ___ R ___
 T ___ R ___
 T ___ R ___
- 2. Property Controlling in Section S ___ T ___ R ___
 S ___ T ___ R ___
- 3. Miscellaneous S ___ T ___ R ___
 Property in Sec. S ___ T ___ R ___

- 4. Lot No. _____, Recorded Plat _____
- 5. Private Claims _____

~~One quarter corner S 3 & S 10, T 47 N, R 42 W.~~

I, John R. Garske, in a field survey on May 22, 1997 do hereby state that under requirements of P.A. 74, Michigan P.A. of 1970, the corner points mentioned in lines 1 and 2 above were in conformance with regulations and rules therefore as required in the current manual of survey instructions of the United States Department of the Interior, Bureau of Land Management or by a decree of a Court of Law and/or that the corner points mentioned in lines 3, 4 and 5 above were in conformance with the rules of the Michigan Board of Land Surveyors or by a Decree of a Court of Law; established, re-established, monumented, recovered, found as expressed below:

NOTE: Not more than 2 corners, all in the same town and range, may be recorded on this certificate.

	A	B	C	D	E	F	G	H	I	J	K	L	M
1													
2	6		5		4		3		2		1		
3													
4	7		8		9		10		11		12		
5													
6	18		17		16		15		14		13		
7													
8	19		20		21		22		23		24		
9													
10	30		29		28		27		26		25		
11													
12	31		32		33		34		35		36		
13													

A. Description of original monument and accessories and/or subsequent restoration:

Original Township Survey by William Burt, D.S., Subdivision lines by William Ives, D.S. in 1848. Original corner was a wood post.
Bearing trees: Sugar 10"-S 55°W-5 links
Lynn 7"-N 60°E-18 links

B. Description of corner evidence found and/or method applied in restoring or reestablishing corner:

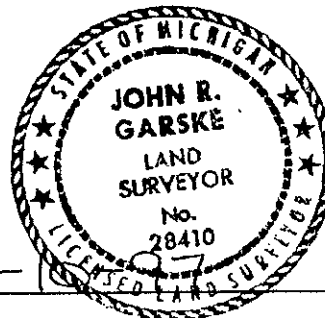
The corner position falls in the centerline of Lake and Hannu Roads. This location is marked by a P.K. nail which has been used in many surveys for the subdivision of Sections 34 and 35. It is the most logical and practical position for the corner location which has been used and accepted.

(Record Research on File)
(See sketch on back)

PEER GROUP APPROVED
Richard L. Dean 6/10/97
COUNTY REPRESENTATIVE

C. Description of monument for corner and accessories established to perpetuate locating the position of the corner:

- I accepted the P.K. nail at the centerline intersection from which I established: two reference monuments and accessories: -Reference Monument 1 -2 1/2"x 30" Aluminum pipe with a 3 1/4" stamped Alum. cap.
- N 45°E-49.21 feet-steel sign rail-1.00 feet.
- Reference Monument 2 -5/8"x 30" iron rod with a stamped 3 1/4" Alum. cap.
- Set at the base of a power pole-S 50°E-47.70 feet.
- Power pole-S 70°W-36.92 feet.
- Power pole-S 50°E-48.81 feet.
- 8" Apple-N 80°W-50.10 feet.



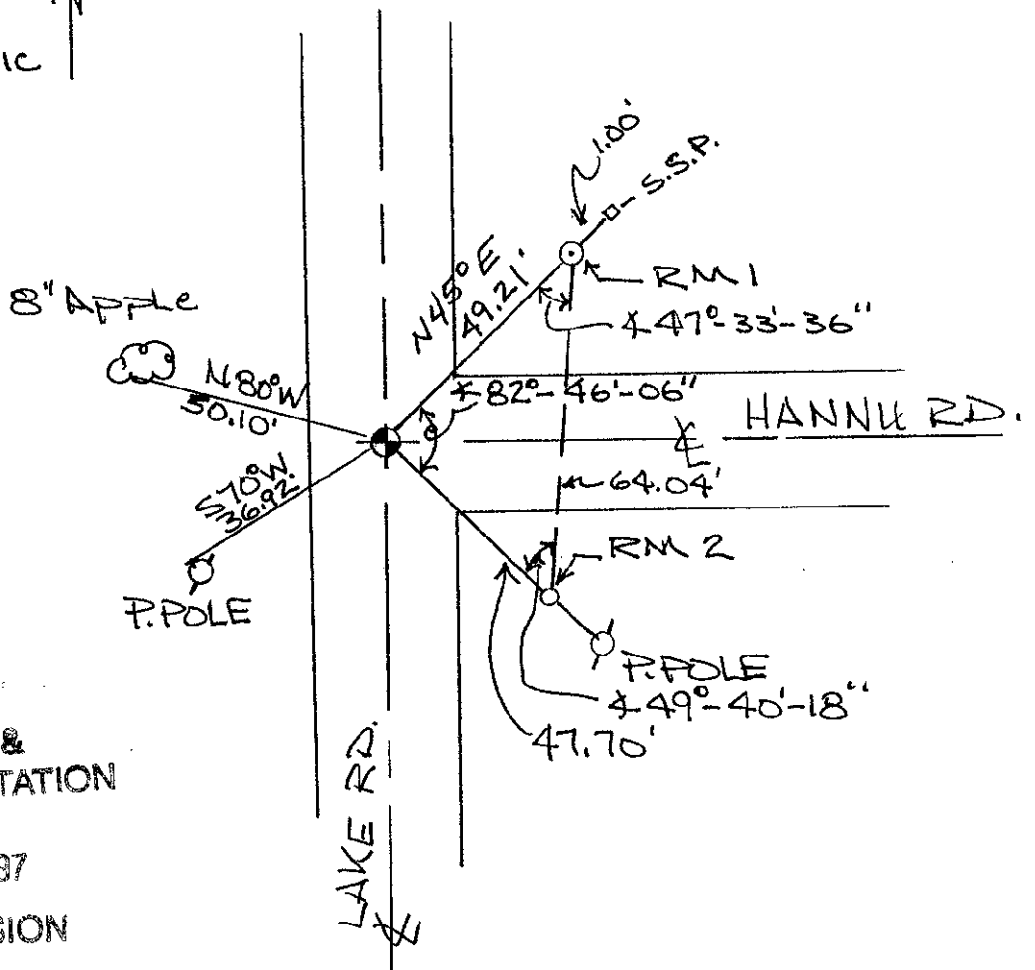
Signed by John R. Garske
Surveyor's Michigan License No. 28410

Date 6-10-97

SKETCH
NO Scale

1/4 COR. 34 | 35
T48N, R47W

BEARING
ARE
MAGNETIC



SURVEY &
REMONUMENTATION

AUG 08 1997

COMMISSION