

MAY 16 1997

COMMISSION

LAND CORNER RECORDATION CERTIFICATE  
Filing Requirement of Act 74, Mich. P.A. 1970

Register's Office }  
Gogebic County } 83.

For corners in

Gogebic  
(County)

Located In:

Corner Code #

1. Public Land Survey

T.49NR 45W      G-1  
T50NR 45W      G-13

T\_\_\_ R\_\_\_

T\_\_\_ R\_\_\_

2. Property Controlling in Section

S\_\_\_ T\_\_\_ R\_\_\_

3. Miscellaneous Property in Sec.

S\_\_\_ T\_\_\_ R\_\_\_  
S\_\_\_ T\_\_\_ R\_\_\_

Received for record the  
12<sup>TH</sup> day of DECEMBER  
A. D. 1996 at 2:30 o'clock  
P m., and recorded in  
Liber 6 of CORNERS  
on page 92.  
Ramona L. Collins, Deputy  
Register of Deeds

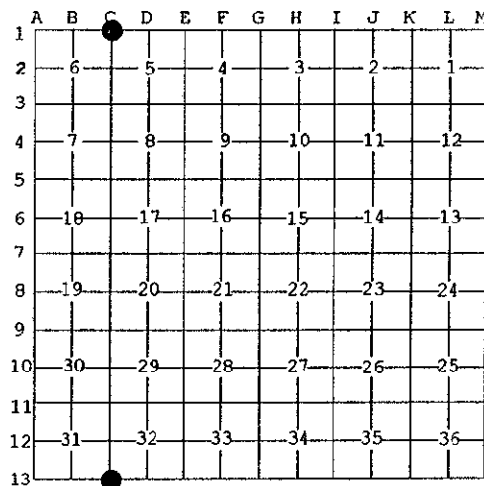
Register of Deeds Stamp & File Number

4. Lot No. \_\_\_\_\_, Recorded Plat \_\_\_\_\_  
5. Private Claims \_\_\_\_\_

Section corner common to sec's. 5, 6, 31 & 32

I, John P. GOSS, in a field survey on Oct. 8, 1996 do hereby state that under requirements of P.A. 74, Michigan P.A. of 1970, the corner points mentioned in lines 1 and 2 above were in conformance with regulations and rules therefore as required in the current manual of survey instructions of the United States Department of the Interior, Bureau of Land Management or by a decree of a Court of Law and/or that the corner points mentioned in lines 3, 4 and 5 above were in conformance with the rules of the Michigan Board of Land Surveyors or by a Decree of a Court of Law; established, re-established, monumented, recovered, found as expressed below:

NOTE: Not more than 2 corners, all in the same town and range, may be recorded on this certificate.



A. Description of original monument and accessories and/or subsequent restoration:

Original corner established by Austin Burt in Sept. 1847. Set Hemlock post  
Original bearing trees: Sugar 12" N 08° E 33 links  
Lynn 20" N 54° W 35 links

Keith Sackett, RLS for DNR found a 2" I.D. iron pipe on July 31, 1980, marked T.49-50 N, R.45 W., S-5, S-6, S-31, S-32; 1959. He accepted said corner and recorded it in Liber 2 page 124 of Land Corners for Gogebic County. He established the following bearing trees and reference objects. 8" Y. Birch-S 18° E- 21.0'- S-5, NBT; 5" Maple-S 85° W- 15.7'-S-6, NBT; 6" Ash- N 63° E 26.3'-S-32, NBT.

B. Description of corner evidence found and/or method applied in restoring or reestablishing corner:

I found the 2" I.D. iron pipe with marked cap and it checked with K. Sackett witnesses. I updated the accessories as noted below to state and county specification.

Act 74 research on file.

PEER GROUP APPROVED  
Richard L. Drabn 12/11/96  
COUNTY RECORDER

C. Description of monument for corner and accessories established to perpetuate locating the position of the corner:

From the 2" Iron Pipe Marked T. 49-50 N, R.45 W.; S-5, S-6, S-31, S-32, 1959. I established the existing and new bearing trees and reference objects.

- 8" Y. Birch      S 18° E      21.0'      (dead)      (1)
- 6" Maple      S 85° W      16.28'      (2)
- 10" Ash      N 63° E      26.70'      (3)
- 4" Y. Birch      S 53° E      15.90'      (4)
- 9" Maple      N 35° W      23.94'      (5)
- 6' Rail & sign      Due S.      2.1'      (6)

Measurements to No. 2, 3, 4 & 5 are to nail in side of tree.

Signed by John P. Goss

Date Oct 9, 1996

Surveyor's Michigan License No. 23509

Fed. No. Z-5

