

**SURVEY & REMONUMENTATION**

APR 27 1995

LIBER 003 PAGE 541

**COMMISSION**

**LAND CORNER RECORDATION CERTIFICATE**  
**Filing Requirement of Act 74, Mich. P.A. 1970**

STATE OF MICHIGAN  
 GRAND TRAVERSE COUNTY  
 RECORDED

29 DEC 94 3:27 P.M.

KARON ANDERSON  
 REGISTER OF DEEDS

Register of Deeds Stamp & File Number

For corners in

Grand Traverse (County)	Located In:	Corner Code #
1. Public Land Survey	T 25N R 10W	I-6
	T _____ R _____	_____
	T _____ R _____	_____
	T _____ R _____	_____
2. Property Controlling in Section	S _____ T _____ R _____	_____
	S _____ T _____ R _____	_____
3. Miscellaneous Property in Sec.	S _____ T _____ R _____	_____
	S _____ T _____ R _____	_____

4. Lot No. \_\_\_\_\_, Recorded Plat \_\_\_\_\_  
 5. Private Claims \_\_\_\_\_

	A	B	C	D	E	F	G	H	I	J	K	L	M
2	6	5	4	3	2	1							
3													
4	7	8	9	10	11	12							
5													
6	18	17	16	15	14	13							
7													
8	19	20	21	22	23	24							
9													
10	30	29	28	27	26	25							
11													
12	31	32	33	34	35	36							
13													

I, Robert F. Mitchell, in a field survey on August 13, 19 94, do hereby certify that under requirements of P.A. 74, Michigan P.A. of 1970, the corner points mentioned in lines 1 and 2 above were in conformance with regulations and rules therefore as required in the current manual of survey instructions of the United States Department of the Interior, Bureau of Land Management or by a decree of a Court of Law and/or that the corner points mentioned in lines 3, 4 and 5 above were in conformance with the rules of the Michigan Board of Land Surveyors or by a Decree of a Court of Law; established, re-established, monumented, re-monumented, recovered, found as expressed below:

**NOTE: Not more than 4 corners, all in the same town and range, may be recorded on this certificate.**

**A. Description of original monument and accessories and/or subsequent restoration:**

I-6) 1/4 Cor common to Secs 14 & 15, T25N-R10W; "Hemlock post witnessed by Hemlock 15" S28°W 29 links and a Beech 20" N86°E 30 links", U.S. Survey by L.S. Scranton dated August 1852. "Found post" C.P. Tuller Survey dated May 21, 1902 and on record in G.T. Co. Surveyor Records. "Set 1/2" Rerod", LCR by J.L. Wilcox dated Nov. 13, 1979 and recorded in L.2, Pg.407 of G.T. Co. Land Corner Records. "Found vertical 4" wide shaft of decomposed wood that fits C.P. Tuller Corners 1/4 and 1/2 mile to South, raised to surface with a 1/2" Rerod with Cap 28417, 1/2" Rerod by Wilcox is located S57°E 5.27'", LCR by Robert F. Mitchell dated March 29, 1985 and recorded in L.3, Pg.10 of G.T. Co. Land Corner Records.

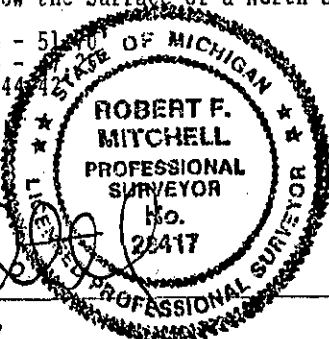
**B. Description of corner evidence found and/or method applied in restoring or reestablishing corner:**

I-6) 1/4 Cor common to Secs 14 & 15, T25N-R10W; "Found 1/2" x 18" Rerod as recorded in L.3, Pg.10 of the G.T. Co. Land Corner Records and is accept as careful and faithful perpetuation of the position of the original corner. Remonumented this position with a 2 1/2" x 30" Flanged bottom galvanized iron pipe with a 3 1/4" brass Cap stamped GRAND TRAVERSE COUNTY REMONUMENTATION, and placed 8" below the surface of the North-South road.

**C. Description of monument for corner and accessories established to perpetuate locating the position of the corner:**

I-6) 1/4 Cor common to Secs 14 & 15, T25N-R10W  
 A 2 1/2" x 30" flanged bottom galvanized iron pipe with a 3 1/4" brass Cap stamped GRAND TRAVERSE COUNTY REMONUMENTATION, 8" below the surface of a North-South gravel road.

- N40°E - 12" Double Sugar Maple - 51.00'
- N45°E - 12" Double Sugar Maple - 51.00'
- S72°W - 8" Triple Red Maple - 44.42'
- N66°W - 14" Red Maple - 77.01'
- N56°W - 7" Sugar Maple - 67.13'
- S58°E - 1/2" Rerod - 5.27'



UNANIMOUSLY ACCEPTED  
 GRAND TRAVERSE COUNTY PEER  
 REVIEW GROUP AS THE OFFICIAL  
 CORNER UNDER MICHIGAN PUBLIC  
 ACT 345 OF 1990 AT A MEETING  
 HELD ON 7-13-94  
 ROBERT F. MITCHELL, P.S., CHAIRMAN

Signed by [Signature] Date December 29, 1994

Surveyor's Michigan License No. 28417