

MICHIGAN
DEPARTMENT OF CONSERVATION
FORESTRY DIVISION

LAND CORNER RECORD

T. 25 N.R. 12 W

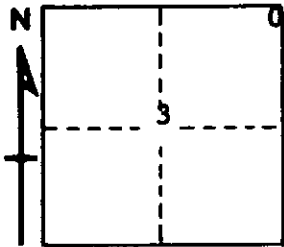
GRAND TRAVERSE COUNTY

DESCRIPTION OF CORNER Sec. corner common to Sections 2 & 3

CORNER MONUMENT Set Std. Dept. Mon.

DATE MONUMENT PLACED AND WITNESSED Aug. 1968

WITNESSES TO CORNER..... Sec. cor. common to Sec. 34 & 35, T26N-R12W



89°45' W 88.44'

10" Maple S 22 W 83.4'

12" Oak S 07 E 96.4'

12" Oak S 48 E 127.3'

AND

CIRCLE CORNER REGISTERED

DESCRIPTION IN DETAIL AS TO HOW CORNER WAS LOCATED AND IDENTIFIED OR RESTORED.

This corner was restored from Grand Traverse County Road Commission Witness. They had witnessed existing corners prior to reconstruction of Youker Road, as the corners would be obliterated by the new construction.

SURVEYOR'S SEAL

SIGNED

Paul F. Rosen

DATE

9/16/68

REGISTERED LAND SURVEYOR #12028