

MICHIGAN  
DEPARTMENT OF CONSERVATION  
FORESTRY DIVISION

# LAND CORNER RECORD

T. 25 N.R. 12 W

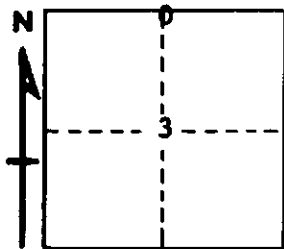
GRAND TRAVERSE COUNTY

DESCRIPTION OF CORNER North 1/4 corner Section 3

CORNER MONUMENT Set Std. Dept. Mon.

DATE MONUMENT PLACED AND WITNESSED Aug. 1968

WITNESSES TO CORNER..... S 1/4, Sec. 34, T26N, R12W Due W 92.60'



CIRCLE CORNER REGISTERED

P. Pole	N 32 E	71.0'
10" Oak	S 11 W	49.7'
8" Oak	S 43 W	55.3'
AND	E. P. Waterman Wit. (1910) Intact	
	18" N. Pine Stump S 40 W	59.4'

DESCRIPTION IN DETAIL AS TO HOW CORNER WAS LOCATED AND IDENTIFIED OR RESTORED.

This corner was restored from Grand Traverse County Road Commission witness. They had witnessed existing corners prior to reconstruction of Youker Road, as the corners would be obliterated by the new construction.

SURVEYOR'S SEAL

SIGNED Carl F. Boser DATE 9/16/68  
REGISTERED LAND SURVEYOR #12028