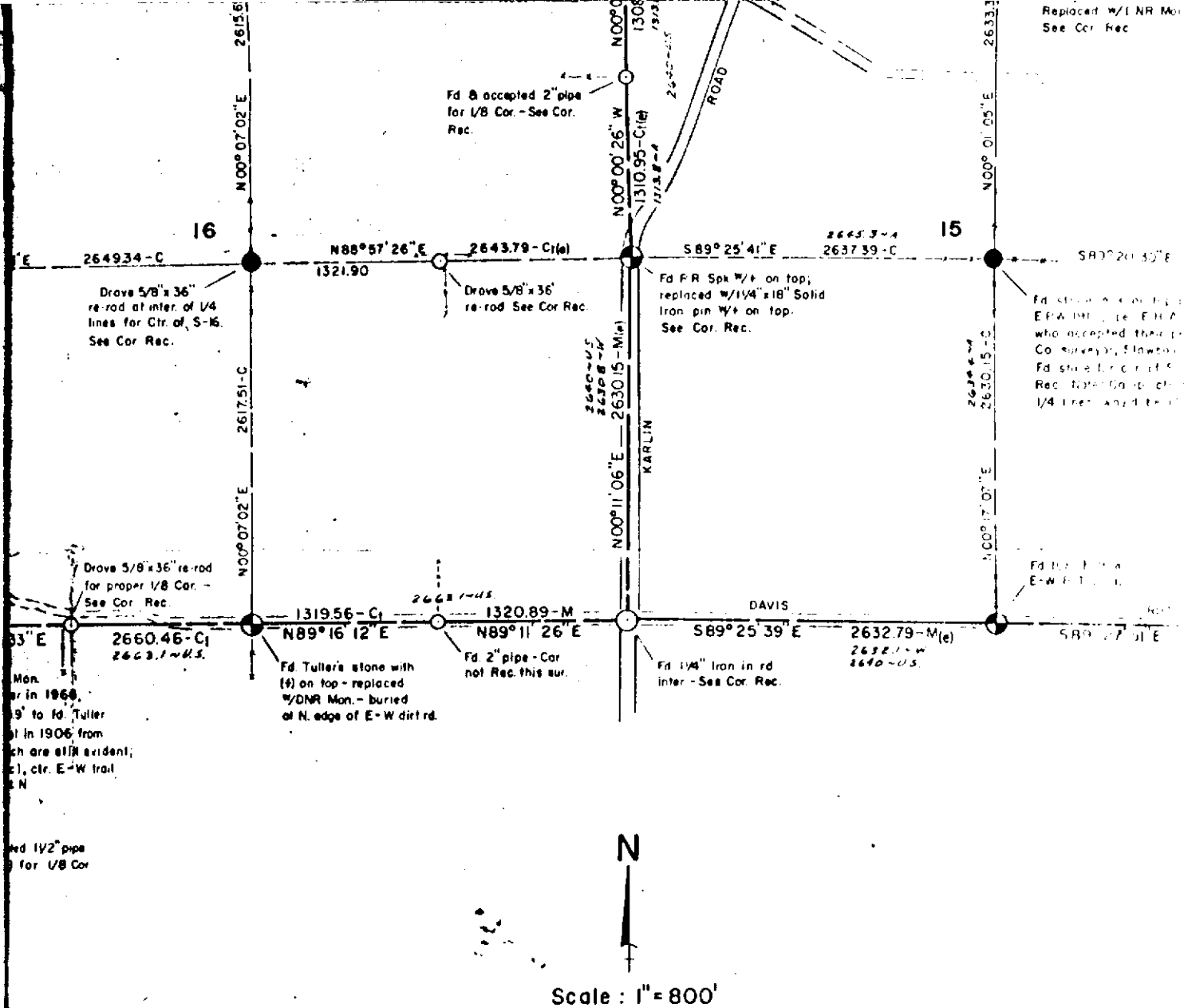


Replaced w/1 NR Mon
See Cor Rec



Mon. in 1966, 19' to fid. Tuller in 1906 from which are still evident; (1), ctr. E-W trail & N

rod 1/2" pipe for 1/8 Cor

rod per Tuller 1/4 S-20 of dbl across 1/8 Cor to N. - Set DNR to S trail rd is 132w

rod in previous

M = Measured on true line.
 M_c = Meas & Cut in on true line
 C_r = Computed from random line
 C_t = Computed from traverse line
 C = Computed, line not run.

- = Section Corner
- ⊙ = 1/4 Corner
- = Center of Section
- ◐ = 1/8 Corner

SP = Single proportion to U.S.
 DP = Double proportion to U.S.
 U.S. = U.S. (G.L.O.) Govt. Survey of 1838 & 1839

Location of roads, rivers, & lakes are approximate from aerial photos, quad maps & field ties

- A = E.H. Allyn, Co. Sur. 1900±.
- CC = C.D. Corver, County Surveyor 1920's±.
- H = J.J. Hubbell, "PLAT-OF-KARLIN" 1901.
- N = H.F. Northrup, Co. sur. 1898±.
- T = C.P. Tuller, Co. Sur. 1900±.
- W = E.P. Waterman, Co. Sur. 1900±.
- F = Gourde, Frasier & Assoc., Surveying & Eng. Firm, Traverse City.
- P&S = Perta & Slaut, Surveying & Eng. Firm, Traverse City.