

MICHIGAN
DEPARTMENT OF CONSERVATION
FORESTRY DIVISION

LAND CORNER RECORD

T. 26 N.R. 9 & 10 W

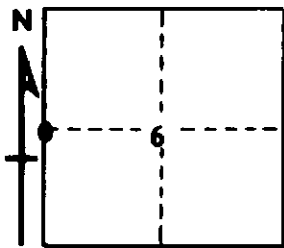
GRAND TRAVERSE COUNTY

DESCRIPTION OF CORNER 1/4 corner common to Sections 6 & 1

CORNER MONUMENT Set Std. Dept. Mon. in Marsh (old lake bed) with Cedar Guard Post

DATE MONUMENT PLACED AND WITNESSED 12/6/68

WITNESSES TO CORNER.....



CIRCLE CORNER REGISTERED

6" J. Pine	Due N	164.4'
8" J. Pine	N 50 W	164.4'
AND		
N-S Random	Due W	0.3'

DESCRIPTION IN DETAIL AS TO HOW CORNER WAS LOCATED AND IDENTIFIED OR RESTORED.

This corner was set by single proportion between Fd. Sec. corner to North and Fd. 1/8 corner to South which fits distance South to comp. location of Sec. corner in Rennie Lake.

SURVEYOR'S SEAL

SIGNED Carl F. Roer DATE 12/6/68
REGISTERED LAND SURVEYOR #12028