

MICHIGAN
DEPARTMENT OF CONSERVATION
FORESTRY DIVISION

LAND CORNER RECORD

T. 26 N.R. 10 W.

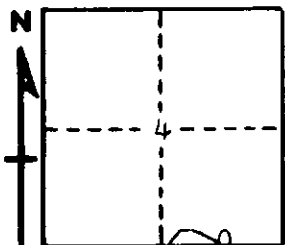
Grand Traverse COUNTY

DESCRIPTION OF CORNER M. C. corner common to Sections 4 and 9, in SW-SE of Section 4

CORNER MONUMENT Set 1" pipe with 4" brass cap

DATE MONUMENT PLACED AND WITNESSED October 29, 1963

WITNESSES TO CORNER.....



CIRCLE CORNER REGISTERED

8" W. Oak N 11 E 36.4'

10" W. Pine stp N 87½ E 19.0'

AND

DESCRIPTION IN DETAIL AS TO HOW CORNER WAS LOCATED AND IDENTIFIED OR RESTORED.

This corner was found while making a survey of this section line. Found very old stake bottom in proper position from NE U. S. Bf stump. Also evidence of older stake point below. Definitely a restoration of the original M. C.

Located 9.425 chains east of the 1/4 corner between 4 - 9.

SURVEYOR'S SEAL

SIGNED *Lucretia J. Ostling* DATE December 16, 1963
REGISTERED LAND SURVEYOR #10,068