

LAND CORNER RECORDATION CERTIFICATE
Filing Requirement of Act 74, Mich. P.A. 1970

For corners in
GRAND TRAVERSE
 (County)

Located In: Corner Code ##

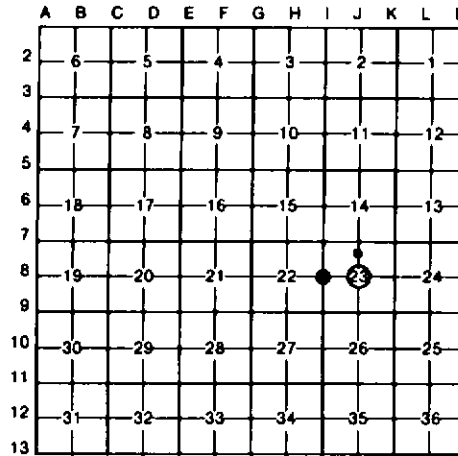
1. Public Land Survey	T <u>26N</u> R <u>11W</u>	<u>1-8</u>
	T _____ R _____	<u>J-8</u>
	T _____ R _____	_____
	T _____ R _____	_____
2. Property Controlling in Section	S <u>23</u> T _____ R _____	<u>5</u>
	S _____ T _____ R _____	_____
3. Miscellaneous Property in Sec.	S _____ T _____ R _____	_____
	S _____ T _____ R _____	_____

filed 7-24-89 99w

Register of Deeds Stamp & File Number

4. Lot No. _____, Recorded Plat _____
 5. Private Claims _____

I, **CARL F. ROSER**, in a field survey on **OCTOBER 10**, 19 **84**, do hereby certify that under requirements of P.A. 74, Michigan P.A. of 1970, the corner points mentioned in lines 1 and 2 above were in conformance with regulations and rules therefore as required in the current manual of survey instructions of the United States Department of the Interior, Bureau of Land Management or by a decree of a Court of Law and/or that the corner points mentioned in lines 3, 4 and 5 above were in conformance with the rules of the Michigan Board of Land Surveyors or by a Decree of a Court of Law; established, re-established, monumented, re-monumented, recovered, found as expressed below:



NOTE: Not more than 4 corners, all in the same town and range, may be recorded on this certificate.

A. Description of original monument and accessories and/or subsequent restoration:

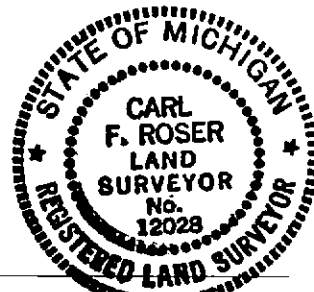
1-8	J-8	5
FD WAGON SKIEN (OR HUB) FOR E 1/4 COR 8-22; IN SAND RD INTERSEC, (N-S-E, CTR TRL RD W IS 40'± S). COR FITS ONE FD E.P. WATERMAN HIT PER 1917 SUR (EPW HAD PINE STP, 30, 837.5°E 45' & PINE STP 30, N59°W 34', WE FD STP SE OK, STP NW IS GONE).	ESTAB'D CTR OF 8-23 AT INTERSEC OF 1/4 LINES. COR IS 8'±SE OF APPROX SAND TRAIL INTERSEC N-S-E-W.	ESTAB'D NW COR OF S 1/2 OF NE 1/4 OF 8-23 PER STANDARD DLM INSTRUCTIONS. WE FD AN IRON AS SET IN ERROR, N03°44'E, 2.11'. CTR OF N-S SAND ROAD IS EAST 3'±.

B. Description of corner evidence found and/or method applied in restoring or reestablishing corner:

1-8	J-8	5
FD WAGON SKIEN (1'±DEEP) IN SAND TRL INTERSEC.	DROVE 5/8" X 34" REROD W/RLS CAP.	DROVE 5/8" X 34" REROD W/RLS CAP.
±13° MAPLE CLP 870°E 45.65'	14° YW CHERRY 844°E 29.3'	9° R PINE 845°E 47.2'
9° W PINE 855°W 102.92'	8° MAPLE N62°E 42.7'	13° MAPLE 880°W 74.1'
±10° W PINE N58°W 51.16'	8° W PINE N12°W 92.7'	6° MAPLE 834°W 113.1'
±30° PINE STP 837°E 65'	7° CHERRY S60°W 87.0'	SET CED POST W/ LOC TAG.
SET CED POST W/ LOC TAG WEST 33'	SET CED POST W/ LOC TAG. N45°E 40'	WEST 16.5'
±E.P. WATERMAN 1917 HIT.		
±WITS THAT FIT J. WILCOX		

C. Description of monument for corner and accessories established to perpetuate locating the position of the corner:

1-8	J-8	5
FD WAGON SKIEN (1'±DEEP) IN SAND TRL INTERSEC.	DROVE 5/8" X 34" REROD W/RLS CAP.	DROVE 5/8" X 34" REROD W/RLS CAP.
±13° MAPLE CLP 870°E 45.65'	14° YW CHERRY 844°E 29.3'	9° R PINE 845°E 47.2'
9° W PINE 855°W 102.92'	8° MAPLE N62°E 42.7'	13° MAPLE 880°W 74.1'
±10° W PINE N58°W 51.16'	8° W PINE N12°W 92.7'	6° MAPLE 834°W 113.1'
±30° PINE STP 837°E 65'	7° CHERRY S60°W 87.0'	SET CED POST W/ LOC TAG.
SET CED POST W/ LOC TAG WEST 33'	SET CED POST W/ LOC TAG. N45°E 40'	WEST 16.5'
±E.P. WATERMAN 1917 HIT.		
±WITS THAT FIT J. WILCOX		



Signed by Carl F. Roser 10-25-88 Date _____

Surveyor's Michigan License No. 12028