

LAND CORNER RECORDATION CERTIFICATE

Filing Requirement of Act 74, Mich. PA 1970

STATE OF MICHIGAN
GRAND TRAVERSE COUNTY
RECORDED

30 DEC 99 3:58 P.M.

KARON ANDERSON
REGISTER OF DEEDS

For Corners In: Grand Traverse (County) Located In Corner Code #

1. Public Land Survey T 27N R 9W H6
T _____ R _____
2. Property Controlling in Section S T R _____
S T R _____ SURVEY & REMONUMENTATION
3. Miscellaneous Property in Section S T R _____
S T R _____ MAR 22 2000

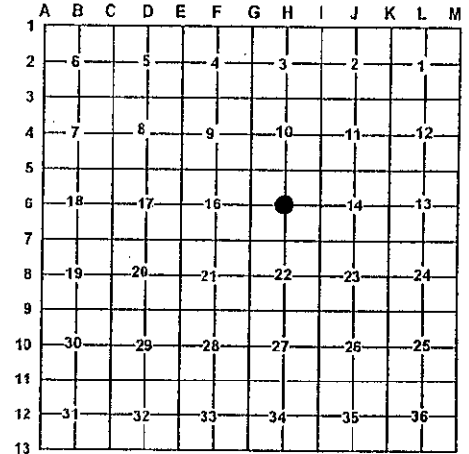
Register of Deeds Stamp & File Number

4. Lot No: _____ Recorded Plat: _____ SECTION

5. Private Claims: _____

I, Craig W. McVean, in a field survey on December 1, 1999 do hereby state that under requirements of PA 74, Michigan PA of 1970, the corner points mentioned in lines 1 and 2 above were in conformance with regulations and rules therefore as required in the current manual of survey instructions of the United States Department of the Interior, Bureau of Land Management or by a decree of a Court of Law and/or that the corner points mentioned in lines 3, 4 and 5 above were in conformance with the rules of the Michigan Board of Land Surveyors or by a Decree of a Court of Law; established, re-established, monumented, recovered, found as expressed below:

NOTE: Not more than 2 corners, all in the same town and range, may be recorded on this certificate.



A. Description of original monument and accessories and/or subsequent restoration:

H6- L.2, P.290-291 - E.P. Waterman - 1908
Set approximate stake

B. Description of corner evidence found and/or method applies in restoring or re-establishing corner:

H6- C 1/4 Sec. 15 - Could find no evidence of Waterman's approx. stake. Waterman's position would not have been acceptable since he only ran the E 1/2 of E-W 1/4 line. Waterman never located the W 1/4 cor of Sec. 15. Set 3 1/4" 'Grand Trav. Co. Remon.' Brass Cap on 2 1/2" x 30" Galv. Iron pipe at the intersection of 1/4 lines per standard BLM procedure. 3 1/4" Brass Cap accepted as the best available evidence of the position of the corner.

C. Description of monument for corner and accessories established to perpetuate localing the position of the corner:

H6- 3 1/4" 'Grand Traverse Co. Remon.' Brass Cap on 2 1/2" x 30" Galv. Iron pipe in ring of stone.
SW 1' to set Blue Carsonite Post
N53°E 32.69' to set N & T in NW side of 21" R. Oak scribed 'XBT'
S40°E 42.96' to set N & T in SW side of 24" R. Oak scribed 'XBT'
S24°W 34.29' to set N & T in E side of 12" Basswood scribed 'XBT'
N51°W 20.77' to set N & T in NE side 13" S. Maple scribed 'XBT'



Signed by: Craig W. McVean Date: 12/13/1999

39088

UNANIMOUSLY APPROVED BY THE GRAND TRAVERSE COUNTY PEER REVIEW GROUP AS THE OFFICIAL CORNER UNDER MICHIGAN PUBLIC ACT 345 OF 1990 AT A MEETING HELD ON 12/13/99

ROBERT F. MITCHELL, P.S., Chairman