

**LAND CORNER RECORDATION CERTIFICATE**

Filing Requirement of Act 74, Mich. PA 1970

For Corners In: Grand Traverse (County)	Located In	Corner Code #
1. Public Land Survey	T _____ R _____	_____
2. Property Controlling in Section	S 20 T 27N R 9W	3
	S 20 T 27N R 9W	4
3. Miscellaneous Property in Section	S _____ T _____ R _____	_____
	S _____ T _____ R _____	_____

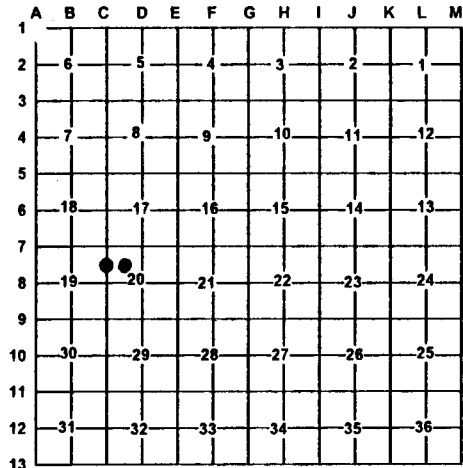
4. Lot No: \_\_\_\_\_ Recorded Plat: \_\_\_\_\_

5. Private Claims: \_\_\_\_\_

I, Craig W. McVean, in a field survey on March 6, 2000 do hereby state that under requirements of PA 74, Michigan PA of 1970, the corner points mentioned in lines 1 and 2 above were in conformance with regulations and rules therefore as required in the current manual of survey instructions of the United States Department of the Interior, Bureau of Land Management or by a decree of a Court of Law and/or that the corner points mentioned in lines 3, 4 and 5 above were in conformance with the rules of the Michigan Board of Land Surveyors or by a Decree of a Court of Law; established, re-established, monumented, recovered, found as expressed below:

**NOTE: Not more than 2 corners, all in the same town and range, may be recorded on this certificate.**

Register of Deeds Stamp & File Number



A. Description of original monument and accessories and/or subsequent restoration:

- 3 - Gosling - Czubak notes -1979  
Set iron
- 4 - None



B. Description of corner evidence found and/or method applies in restoring or re-establishing corner:

- 3 - N 1/16 common to Sec. 19 & 20, T27N, R9W  
Fnd. PSA # 12581 Capped 1/2" Rebar. Fits SP position within reason.  
1/2" CIR accepted as the best available evidence of the position of the corner
- 4 - NW 1/16, Sec. 20, T27N, R9W  
Set 2" Alum. Cap on 5/8" x 34" Rebar per standard BLM Procedure. C/L of N-S VASA trail is 14' E. Corner on Slope of Fill.

C. Description of monument for corner and accessories established to perpetuate locating the position of the corner:

- 3 - Replaced 1/2" X 18" CIR with 2" Alum. Cap on 5/8" x 34" Rebar  
N20°W 8.52' to N&T in W. side 13" Tw. W. Oak  
N48°E 6.08' to N&T in SE side 6" R. Maple  
S5°E 5.03' to N&T in W. side 16" R. Oak  
N75°W 20.39' to N&T in S. side 12" R. Oak  
Set Blue Carsonite Post with loc. tag 1' NW
- 4 - 2" AC on 5/8" x 34" Rebar  
S73°W 11.17' to set N&T in N. side of 5" W. Pine  
N27°W 6.66' to set N&T in SW side of 4" W. Pine  
N38°E 35.86' to set N&T in NW side of 5" W. Pine  
S66°E 43.10' to set N&T in SW side of 9" R. Oak  
Set Blue Carsonite Post w/ loc. tag 1' NE

Signed by: Craig W. McVean  
Surveyor's Michigan License No.: 39088

Date: 1/22/2001