

# LAND CORNER RECORDATION CERTIFICATE

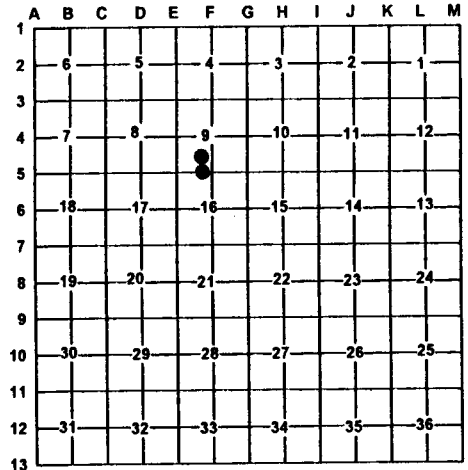
Filing Requirement of Act 74, Mich. PA 1970

For Corners In: Grand Traverse (County)	Located In	Corner Code #
1. Public Land Survey	T _____ R _____ T _____ R _____	_____
2. Property Controlling in Section	S 9 T 27N R 9W S 9 & 16 T 27N R 9W	CESW 1/64 EW 1/64
3. Miscellaneous Property in Section	S _____ T _____ R _____ S _____ T _____ R _____	_____
4. Lot No: _____	Recorded Plat: _____	
5. Private Claims: _____		

Register of Deeds Stamp & File Number

I, Craig W. McVean, in a field survey on May 24, 2000 do hereby state that under requirements of PA 74, Michigan PA of 1970, the corner points mentioned in lines 1 and 2 above were in conformance with regulations and rules therefore as required in the current manual of survey instructions of the United States Department of the Interior, Bureau of Land Management or by a decree of a Court of Law and/or that the corner points mentioned in lines 3, 4 and 5 above were in conformance with the rules of the Michigan Board of Land Surveyors or by a Decree of a Court of Law; established, re-established, monumented, recovered, found as expressed below:

**NOTE: Not more than 2 corners, all in the same town and range, may be recorded on this certificate.**



**A. Description of original monument and accessories and/or subsequent restoration:**

CESW 1/64 - None

EW 1/64 - Rec. Sur. - L. 4, P. 607 - 1988  
R.F. Mitchell - iron set

**B. Description of corner evidence found and/or method applies in restoring or re-establishing corner:**

CESW 1/64 - Being the NE Cor. of W 1/2 of SE 1/4 of SW 1/4 Sec. 9, T27N, R9W. Set 2" Alum. Cap on 5/8" x 34" Rebar per Standard BLM Procedure with ring of stone. Placed boulder on W. side in dry stream bed.

EW 1/64 - Cor. common to Sec. 9 & 16, T27N, R9W - being the SE Cor. of W 1/2 of SE 1/4 of the SW 1/4 - Sec. 9. Set 2" Alum. Cap on 5/8" x 34" Rebar per Standard BLM Procedure on E. edge of 26" S. Maple. E-W overgrown lane is 9' South. E-W lane fence is 18' North.

Reference Pt. - Fd. 1/2" CIR # 28417 - N3°34' W 13.36' of 'EW 1/64'. Position based on rejected position at corner 'F5'. 1/2" CIR not utilized as EW 1/64 in this survey.

**C. Description of monument for corner and accessories established to perpetuate locating the position of the corner:**

CESW 1/64 - 2" Alum. Cap on 5/8" x 34" Rebar in ring of stone. N86°E 23.21' to N&T in N. side 7" Twin Cedar  
N10°E 21.55' to N&T in E. side 7" Cedar  
S44°W 42.57' to N&T in SE side 9" R. Pine  
S4°W 52.68' to N&T in W. side 15" W. Pine  
Set Blue Carsonite Post with loc. tag 1' NW

EW 1/64 - Set 2" Alum. Cap on 5/8" x 34" Rebar  
N6°E 33.80' to N&T in E. side 8" W. Pine  
N78°E 13.89' to N&T in N. side Triple 10" S. Maple  
S30°E 20.10' to N&T in NE side 6" R. Oak  
S2°W 36.51' to N&T in W side 10" W. Pine  
Set Blue Carsonite Post with loc. tag 1.3' SW  
N3°34'W 13.36' to Ref. Pt.  
S11°30'W 23.50' to Fd. 2 1/4" I.D. Iron Pipe.

Signed by:

*Craig W. McVean*

Date:

1/22/2001

Surveyor's Michigan License No.:

39088

