

LAND CORNER RECORDATION CERTIFICATE

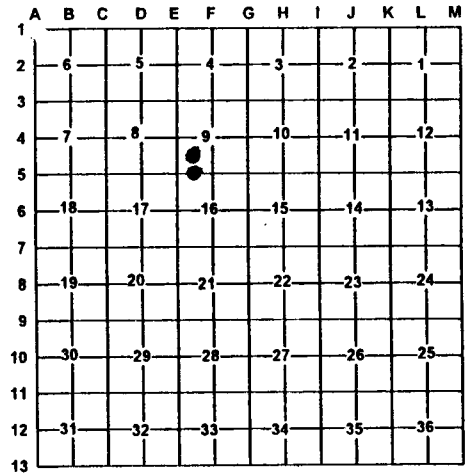
Filing Requirement of Act 74, Mich. PA 1970

For Corners In: Grand Traverse (County)	Located In	Corner Code #
1. Public Land Survey	T _____ R _____	_____
	T _____ R _____	_____
2. Property Controlling in Section	S 9 T 27N R 9W	11
	S 16 T 27N R 9W	1
3. Miscellaneous Property in Section	S _____ T _____ R _____	_____
	S _____ T _____ R _____	_____
4. Lot No: _____	Recorded Plat: _____	
5. Private Claims: _____		

Register of Deeds Stamp & File Number

I, Craig W. McVean, in a field survey on May 24, 2000 do hereby state that under requirements of PA 74, Michigan PA of 1970, the corner points mentioned in lines 1 and 2 above were in conformance with regulations and rules therefore as required in the current manual of survey instructions of the United States Department of the Interior, Bureau of Land Management or by a decree of a Court of Law and/or that the corner points mentioned in lines 3, 4 and 5 above were in conformance with the rules of the Michigan Board of Land Surveyors or by a Decree of a Court of Law; established, re-established, monumented, recovered, found as expressed below:

NOTE: Not more than 2 corners, all in the same town and range, may be recorded on this certificate.



A. Description of original monument and accessories and/or subsequent restoration:

11 - None 1 - None



B. Description of corner evidence found and/or method applies in restoring or re-establishing corner:

<p><u>11</u> - SW 1/16, Sec. 9, T27N, R9W Set 2" Alum. Cap on 5/8" x 34" Rebar per standard BLM procedure</p>	<p><u>1</u> - W 1/16 Cor. common to Sec 9 & 16, T27N, R9W Set 2" Alum. Cap on 5/8" x 34" Rebar in ring of stone per standard BLM procedure in overgrown E-W lane. Fence remains S. E-W Lane fences on ground in trees are 19' +/- N & 12' +/- S.</p>
---	--

C. Description of monument for corner and accessories established to perpetuate locating the position of the corner:

<p><u>11</u> - 2" AC on 5/8" x 34" Rebar N77°E 25.27' to set N&T in S. side 20" W. Pine N42°W 13.10' to set N&T in SW side 18" W. Pine N82°W 32.98' to set N&T in S. side 9" W. Pine S69°W 19.11' to set N&T in N. side 9" Ironwood Set Blue Carsonite Post with loc. tag 1' SE</p>	<p><u>1</u> - 2" AC on 5/8" x 34" Rebar in ring of stone S1°E 21.68' to N&T in E. side 12" R. Pine S52°E 18.38' to N&T in NE side 19" S. Maple N2°E 29.64' to N&T in W. side 9" W. Pine N53°W 51.03' to N&T in NE side 11" R. Pine Set Blue Carsonite Post with Loc. Tag 1' NE</p>
---	--

Signed by: Craig W. McVean
Surveyor's Michigan License No.: 39088

Date: 1/22/2001