

93-56 MAR 16 1994

LAND CORNER RECORDATION CERTIFICATE
Filing Requirement of Act 74, Mich. P.A. 1970

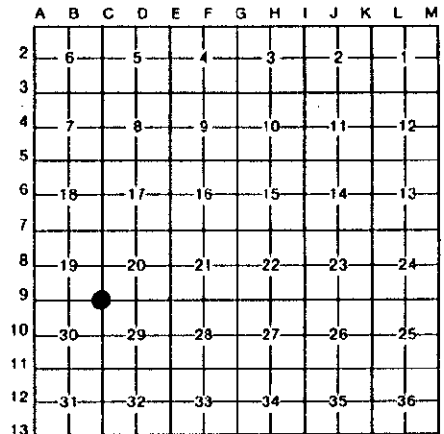
East Bay Twp COMMISSION
For corners in

Grand Traverse (County) Located In: SEC. 19 Corner Code # C-9
1. Public Land Survey T 27N R 10W
2. Property Controlling in Section S T R
3. Miscellaneous Property in Sec. S T R
4. Lot No. Recorded Plat
5. Private Claims

STATE OF MICHIGAN GRAND TRAVERSE COUNTY RECORDED
29 DEC 93 3:05 P.M.
KARON ANDERSON REGISTER OF DEEDS

Register of Deeds Stamp & File Number

I, Corey J. Hughes, in a field survey on December 20, 1993, do hereby certify that under requirements of P.A. 74, Michigan P.A. of 1970, the corner points mentioned in lines 1 and 2 above were in conformance with regulations and rules therefore as required in the current manual of survey instructions of the United States Department of the Interior, Bureau of Land Management or by a decree of a Court of Law and/or that the corner points mentioned in lines 3, 4 and 5 above were in conformance with the rules of the Michigan Board of Land Surveyors or by a Decree of a Court of Law; established, re-established, monumented, re-monumented, recovered, found as expressed below: GCA.#93420.03



NOTE: Not more than 4 corners, all in the same town and range, may be recorded on this certificate.

A. Description of original monument and accessories and/or subsequent restoration:

C-9 (Corner common to Sections 19, 20, 29 and 30)
Apr. 1852 - US Survey
N25° E 32 lks. Beech 16"
S17° W 48 lks. Beech 12"
unknown date - GT.Co.Rd.Comm.
Stone with "x" marked on top
S43° W 84.0' School Hse/NE.cor.
S78° W 72.1' P.Pole
S25° E 71.35' Locust 30"
Nov. 1887 - C.Tuller
Found stone by W.Slawson
Jan. 1895 - G.Steele
S39° W 84.5' School Hse/NE.cor.
S49° E 57.7' B.Cherry 12"
1964 - GT.Co.Rd.Comm.
N50° E 91.02' P.Pole
N61° W 66.75' P.Pole
S27° E 70.61' W.Cherry 48"
S34° W 90.37' School/porch cor.
Jul. 1985 - R.Mitchell
Act. 74 - L.3, P.40
Found Iron in Pavement Box in c/1 Rd. intersection (N-S-E-W)
S40° W 84.4' School/NE.cor.
S30° E 71.6' Locust 55"

Jul. 1914 - E.Waternan
Stone
S35° W 66.2' Poplar 16"
S29° E 70.8' Locust 18"
Jun. 1973 - G.DeLaMater
Act. 132 - L.1, P.871
Found 3/4" Iron pipe in Mon.Box
N45° E 91.15' P.Pole #10948
S40° E 70.61' Box Elder 36"
N42° W 68.67' P.Pole #10947.5

B. Description of corner evidence found and/or method applied in restoring or reestablishing corner:

C-9 (Corner common to Sections 19, 20, 29 and 30)
Found Axle shaft 2.5' below ground surface in a pavement box in c/1 of Road intersection (N-S-E-W).
EAST 0.25' Iron Pipe - 3/4" (from 1973)
S44° W 83.82' School/NE.cor. (from 1895)

Set a 2-1/2"x30" flanged bottom galvanized iron pipe with a 3-1/4" brass cap stamped "Grand Traverse County Remonumentation", in a pavement box, over the top of the existing axle shaft.

The accessories found are accepted as a careful and faithful perpetuation of the position of the original corner.

C. Description of monument for corner and accessories established to perpetuate locating the position of the corner:

C-9 (Corner common to Sections 19, 20, 29 and 30)
Set a 2-1/2"x30" flanged bottom galvanized iron pipe with a 3-1/4" brass cap stamped "Grand Traverse County Remonumentation", in a pavement box, over the top of an existing axle shaft. Corner fall in middle of a road intersection (N-S-E-W).
S44° W 83.82' School/NE.cor.
N55° W 61.31' P.Pole/apk in NE.face
N55° E 77.65' Firehydrant/top nut
S40° E 77.34' P.Pole/apk in NE.face

Corner approved by Grand Traverse County Peer Review Group on Nov. 3, 1993.

Signed by COREY J. HUGHES Date DEC. 28, 1993

Surveyor's Michigan License No. 20706

