

93-52

MAR 16 1994

LAND CORNER RECORDATION CERTIFICATE
Filing Requirement of Act 74, Mich. P.A. 1970

STATE OF MICHIGAN
GRAND TRAVERSE COUNTY
RECORDED

East Bay Twp.
For corners in COMMISSION

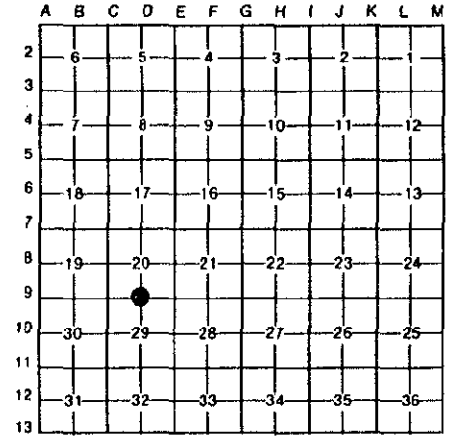
Grand Traverse (County) Located In: Sec. 20 Corner Code #: D-9

- 1. Public Land Survey T 27N R 10W D-9
2. Property Controlling in Section S T R
3. Miscellaneous Property in Sec. S T R

29 DEC 93 3:04 P.M.
KARON ANDERSON
REGISTER OF DEEDS

Register of Deeds Stamp & File Number

- 4. Lot No.
5. Private Claims



I, Corey J. Hughes, in a field survey on December 20, 1993, do hereby certify that under requirements of P.A. 74, Michigan P.A. of 1970, the corner points mentioned in lines 1 and 2 above were in conformance with regulations and rules therefore as required in the current manual of survey instructions of the United States Department of the Interior, Bureau of Land Management or by a decree of a Court of Law and/or that the corner points mentioned in lines 3, 4 and 5 above were in conformance with the rules of the Michigan Board of Land Surveyors or by a Decree of a Court of Law; established, re-established, monumented, re-monumented, recovered, found as expressed below: GCA.#93420.03

NOTE: Not more than 4 corners, all in the same town and range, may be recorded on this certificate.

A. Description of original monument and accessories and/or subsequent restoration:

- D-9 (1/4 Corner common to Sections 20 and 29)
Apr. 1852 - US Survey
Jan. 1895 - G. Steele
date unknown - GT. Co. Rd. Comm.
1964 - GT. Co. Rd. Comm.
Aug. 1990 - R. Mitchell
Jul. 1916 - E. Waterman
Mar. 1969 - P. Perla
Apr. 1974 - L. Czubak

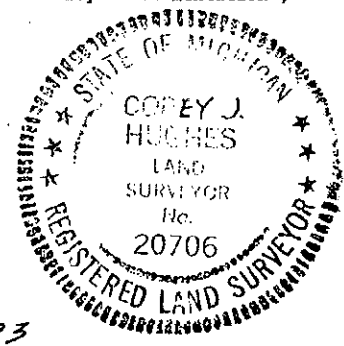
B. Description of corner evidence found and/or method applied in restoring or reestablishing corner:

D-9 (1/4 Corner common to sections 20 and 29)
Found 1" Axle Shaft in a pavement box (from 1964)
Replace the corner with a 2-1/2"x30" flanged bottom galvanized iron pipe with a 3-1/4" brass cap stamped "Grand Traverse County Remonumentation", in a pavement box.
The accessories found are accepted as a careful and faithful perpetuation of the position of the original corner.

C. Description of monument for corner and accessories established to perpetuate locating the position of the corner:

D-9 (1/4 Corner common to Sections 20 and 29)
Set a 2-1/2"x30" flanged bottom galvanized iron pipe with a 3-1/4" brass cap stamped "Grand Traverse County Remonumentation", in a pavement box.
N03'W 34.68' P.Pole/spk in W.face
S46'E 57.45' C.Elm 5"tri./spk in NE.face
S45'W 55.67' P.Pole/spk in SE.face
N43'W 51.52' Guy Pole/spk in SW.face

Corner approved by Grand Traverse City Peer Review Group on Nov. 3, 1993.



Signed by COREY J. HUGHES Date DEC. 28, 1993

Surveyor's Michigan License No. 20706