

MICHIGAN
DEPARTMENT OF CONSERVATION
FORESTRY DIVISION

LAND CORNER RECORD

T. 27 N.R. 10 W

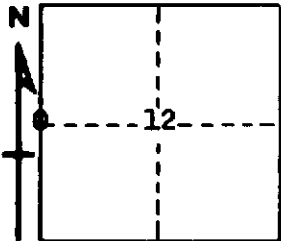
Grand Traverse COUNTY

DESCRIPTION OF CORNER 1/4 corner common to Sections 11 and 12

CORNER MONUMENT Set 1" pipe with 1/4" aluminum cap

DATE MONUMENT PLACED AND WITNESSED Mar. 22, 1966

WITNESSES TO CORNER.....



7" R. Pine S. 22 E 27.9'

6" R. Pine S 45 W 34.2'

AND

CIRCLE CORNER REGISTERED

DESCRIPTION IN DETAIL AS TO HOW CORNER WAS LOCATED AND IDENTIFIED OR RESTORED.

This corner was found while making a section subdivision of Section 12. Found Good post bottom at corner. NW USBT in place with good face. Very good original corner.

SURVEYOR'S SEAL

SIGNED *Kenneth J. Ostling* DATE April 14, 1966
REGISTERED LAND SURVEYOR #10068