

MICHIGAN
DEPARTMENT OF CONSERVATION
FORESTRY DIVISION

LAND CORNER RECORD

T. 27 N. R. 10 W

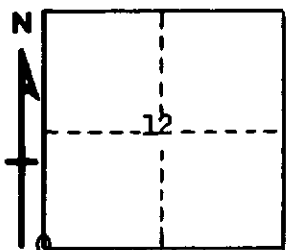
Grand Traverse COUNTY

DESCRIPTION OF CORNER Sec. corner common to Sections 11-12-13-14

CORNER MONUMENT Set 1" pipe with 4" aluminum cap

DATE MONUMENT PLACED AND WITNESSED May 5, 1966

WITNESSES TO CORNER.....



9" R. Pine S 20 E 27.2'

16 W, Pine S 55 W 33.7'

AND

CIRCLE CORNER REGISTERED

DESCRIPTION IN DETAIL AS TO HOW CORNER WAS LOCATED AND IDENTIFIED OR RESTORED.

This corner was restored while making a survey of Section 12.
Set corner from probably USBT stumps and live tree stump south.
Falls in line with remains of old fence line south, and checks
good for measurement to 1/4 corners north and south. Best
available evidence.

SURVEYOR'S SEAL

SIGNED *Lucretia Ostling* DATE May 10, 1966
REGISTERED LAND SURVEYOR #10068