

MICHIGAN
DEPARTMENT OF CONSERVATION
FORESTRY DIVISION



LAND CORNER RECORD

T. 27 N.R. 9 W
T. 27 N.R. 10 W

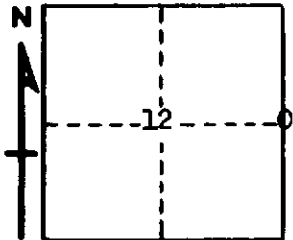
Grand Traverse COUNTY

DESCRIPTION OF CORNER 1/4 Corner common to Sections 7-12

CORNER MONUMENT Set 1" pipe with 1/4" Aluminum Cap

DATE MONUMENT PLACED AND WITNESSED May 5, 1966

WITNESSES TO CORNER.....



6" H. Maple S 1/4 W 24.5'

6" R. Oak N 83 E 33.7'

AND

CIRCLE CORNER REGISTERED

DESCRIPTION IN DETAIL AS TO HOW CORNER WAS LOCATED AND IDENTIFIED OR RESTORED.

This corner was restored while making a survey in Section 12. Set corner at old established fence intersection, on line between Section corners. Could find no evidence of previous corner, but this point conforms with surrounding occupation and appears to have been accepted as proper location.

SURVEYOR'S SEAL

SIGNED *Kenneth J. Ostberg* DATE May 10, 1966
REGISTERED LAND SURVEYOR #10068