

MICHIGAN
DEPARTMENT OF CONSERVATION
FORESTRY DIVISION

LAND CORNER RECORD

T. 27 N R. 10 W

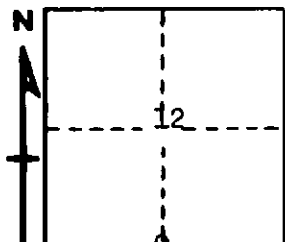
Grand Traverse COUNTY

DESCRIPTION OF CORNER 1/4 corner common to Sections 12-13

CORNER MONUMENT Set 1" pipe with 4" aluminum cap

DATE MONUMENT PLACED AND WITNESSED May 5, 1966

WITNESSES TO CORNER.....



CIRCLE CORNER REGISTERED

1 1/4" W. Oak S 75 E- 14.0'

10" R. Pine S 74 W 22.6'

AND

DESCRIPTION IN DETAIL AS TO HOW CORNER WAS LOCATED AND IDENTIFIED OR RESTORED.

This corner was set by proportionate measurement between section corners, while making a survey in Section 12. Could not identify U.S. evidence, or a previous corner.

SURVEYOR'S SEAL

SIGNED *Kenneth J. Ostling* DATE May 10, 1966
REGISTERED LAND SURVEYOR #20068